

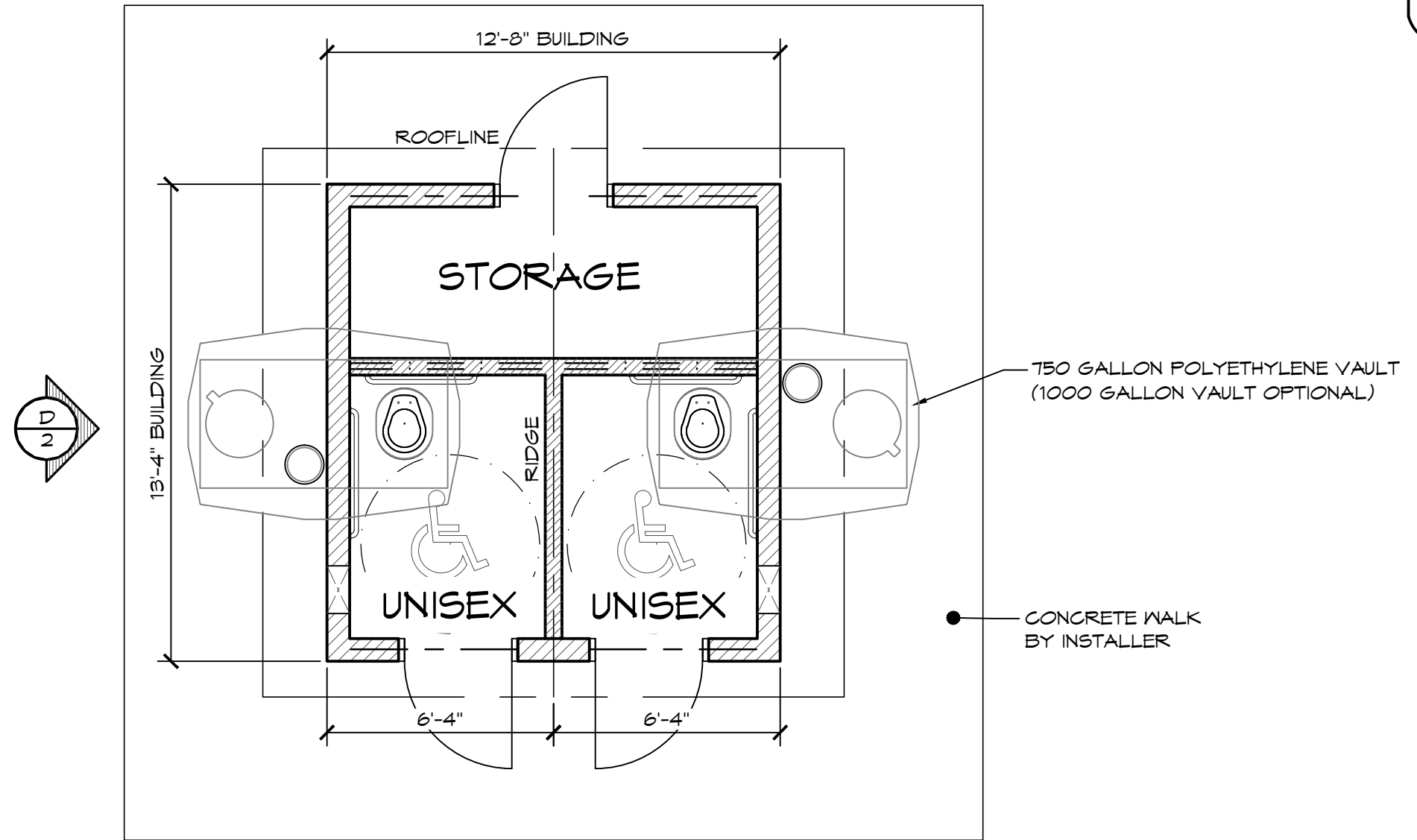


LEGEND		
SYMBOL	DESCRIPTION	AREA/ QUANTITY
---	GABLE WINDOW	2
---	GABLE VENT	2
== : ==	2x6 WOOD FILLER WALL	2
	16" x 24" KICKPROOF WALL VENT	2

THESE PLAN VIEW AND ELEVATION DRAWINGS ARE A PRELIMINARY ARCHITECTURAL REPRESENTATION OF THE BUILDING. ALL DIMENSIONS, FEATURES AND COMPONENTS SHOWN ON THESE PRELIMINARY DRAWINGS MAY OR MAY NOT BE PART OF THE QUOTE. PLEASE REFER TO THE "SCOPE OF SUPPLY AND SERVICES" LETTER PROVIDED WITH YOUR QUOTE FOR ROMTEC'S PROPOSED SCOPE OF SUPPLY.

WALL TYPE SCHEDULE

-  8" REINFORCED CONCRETE MASONRY BLOCK WALL WITH MORTAR JOINTS, GROUTED SOLID ALL CELLS RUNNING BOND PATTERN.
-  6" REINFORCED CONCRETE MASONRY BLOCK WALL WITH MORTAR JOINTS, GROUTED SOLID ALL CELLS RUNNING BOND PATTERN.



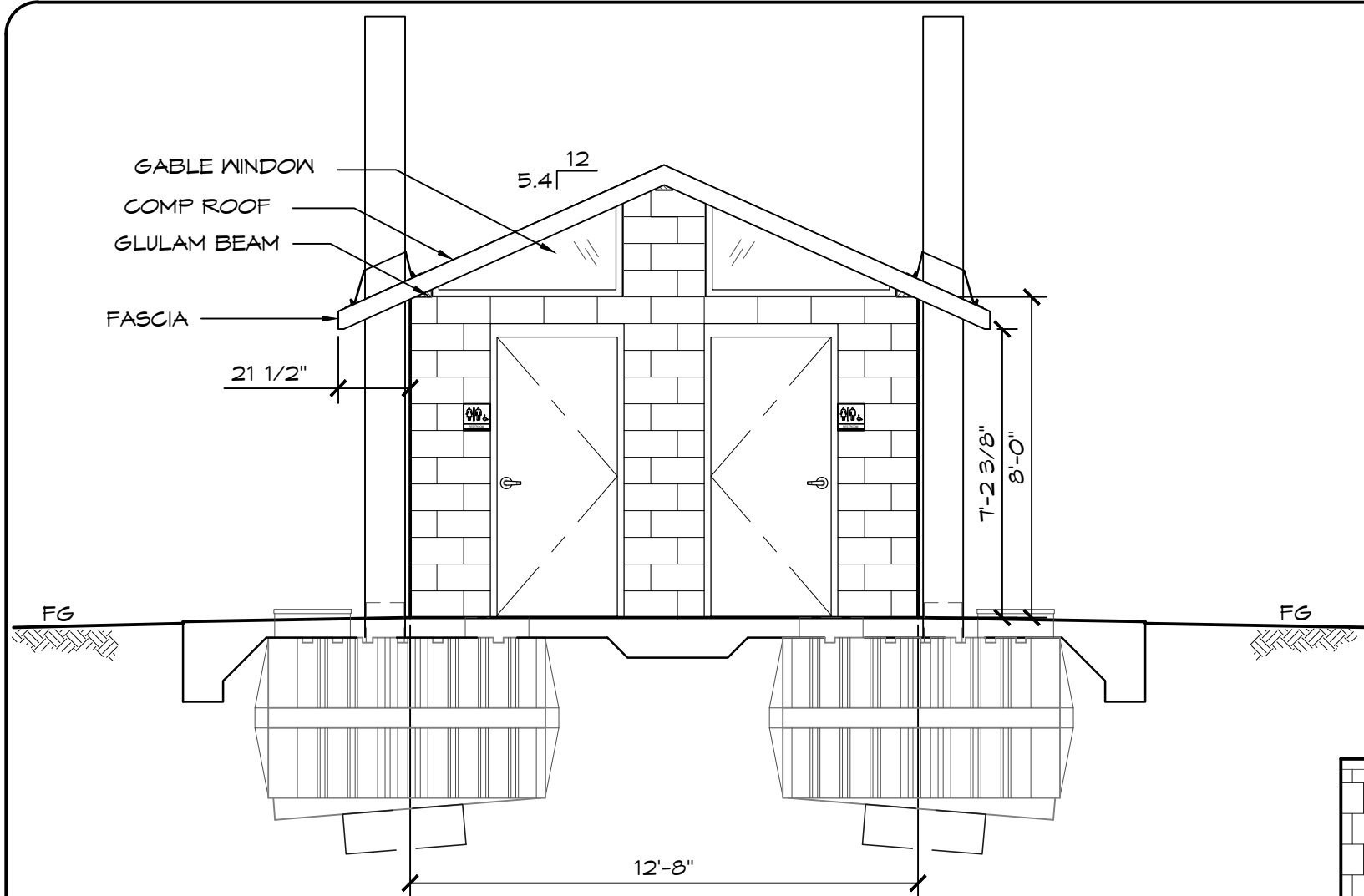
1 FLOOR PLAN
SCALE: 1/4" = 1'-0"

© 2015 ROMTEC, INC. ALL RIGHTS RESERVED. THESE PLANS AND DRAWINGS MAY NOT BE REPRODUCED, ADAPTED OR FURTHER DISTRIBUTED, AND NO BUILDINGS MAY BE CONSTRUCTED FROM THESE PLANS, WITHOUT THE WRITTEN PERMISSION OF ROMTEC, INC.

PROJECT: 1017 SST ASPEN COMPACT DOUBLE WATERLESS RESTROOM W/ STORAGE		
CUSTOMER	PROJECT LOCATION	
PROJECT#:	XXXX	
MODEL#:	1017	
DATE:	00/00/15	
REVISIONS		
REV.	DATE:	BY
DRAWN BY: TH		

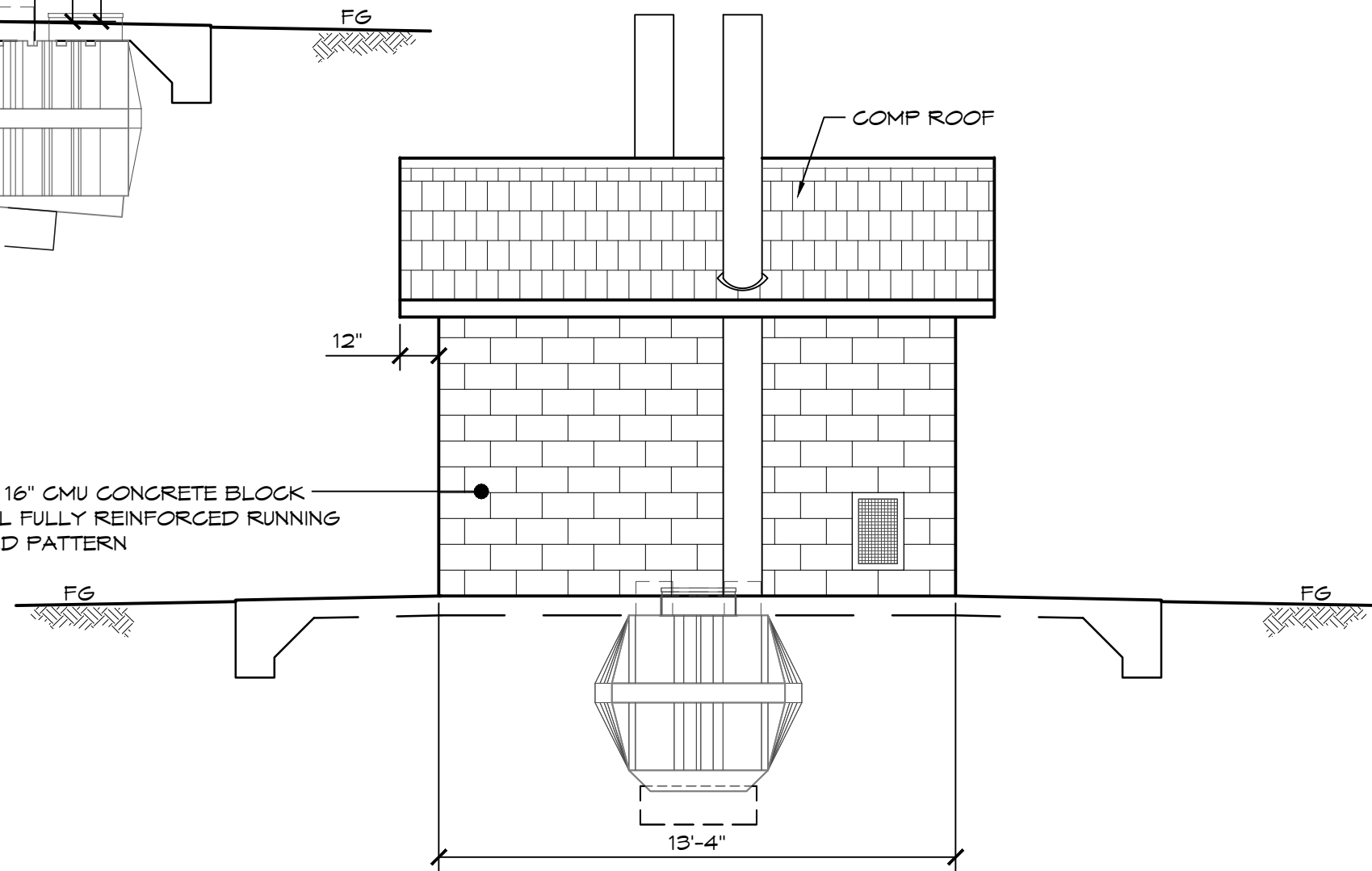
ROMTEC
18240 NORTH BANK ROAD - ROSEBURG, OR 97470
(541) 496-3541 FAX (541) 496-0803

PRELIMINARY



C ELEVATION VIEW
SCALE: 1/4" = 1'-0"

8" x 16" CMU CONCRETE BLOCK
WALL FULLY REINFORCED RUNNING
BOND PATTERN



D ELEVATION VIEW
SCALE: 1/4" = 1'-0"

© 2015 ROMTEC, INC. ALL RIGHTS RESERVED. THESE PLANS AND DRAWINGS MAY NOT BE REPRODUCED, ADAPTED OR FURTHER DISTRIBUTED, AND NO BUILDINGS MAY BE CONSTRUCTED FROM THESE PLANS, WITHOUT THE WRITTEN PERMISSION OF ROMTEC, INC.
PROJECT: 1017 SST ASPEN COMPACT DOUBLE WATERLESS RESTROOM W STORAGE

PROJECT#:	XXXX
MODEL#:	1017
DATE:	00/00/15
REVISIONS	
REV.	DATE:
BY	
DRAWN BY:	TH