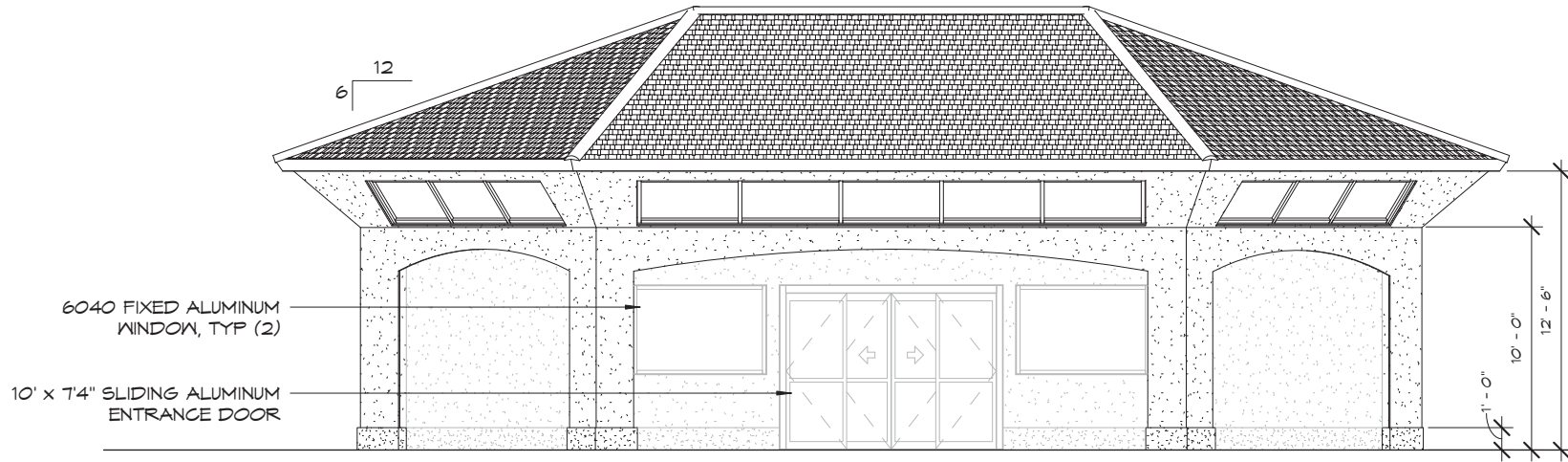
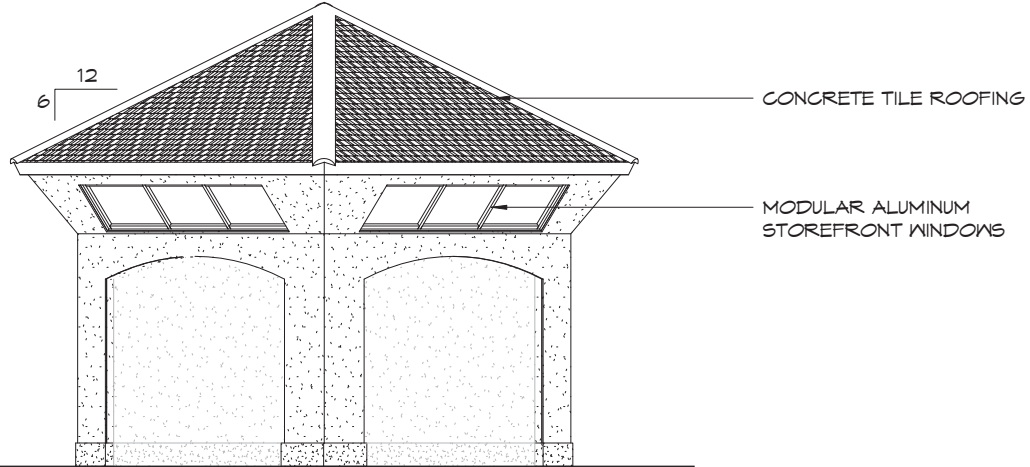


DRAFT
NOT FOR
CONSTRUCTION



① SOUTH ELEVATION
3/16" = 1'-0"



② WEST ELEVATION
3/16" = 1'-0"

©2004 ROMTEC, INC. ALL RIGHTS RESERVED. THESE PLANS AND DRAWINGS MAY NOT BE REPRODUCED, ADAPTED OR FURTHER DISTRIBUTED, AND NO BUILDINGS MAY BE CONSTRUCTED FROM THESE PLANS, WITHOUT THE WRITTEN PERMISSION OF ROMTEC, INC.

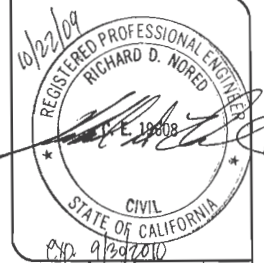
PROJECT: CUSTOM HEXAGONAL BUILDING ON THE PIER
HGE
INC
INC
 ARCHITECTS, ENGINEERS,
 SURVEYORS, & PLANNERS
 3700 Park Avenue, Suite 200, Orange, CA 92651 (714) 399-1100
 1974 W. 10th Street, Portland, Oregon 97209 (503) 252-1000

ROMTEC
 18200 N.W. 10th Street, Fort Lauderdale, FL 33305
 (954) 965-3121 FAX (954) 965-3000

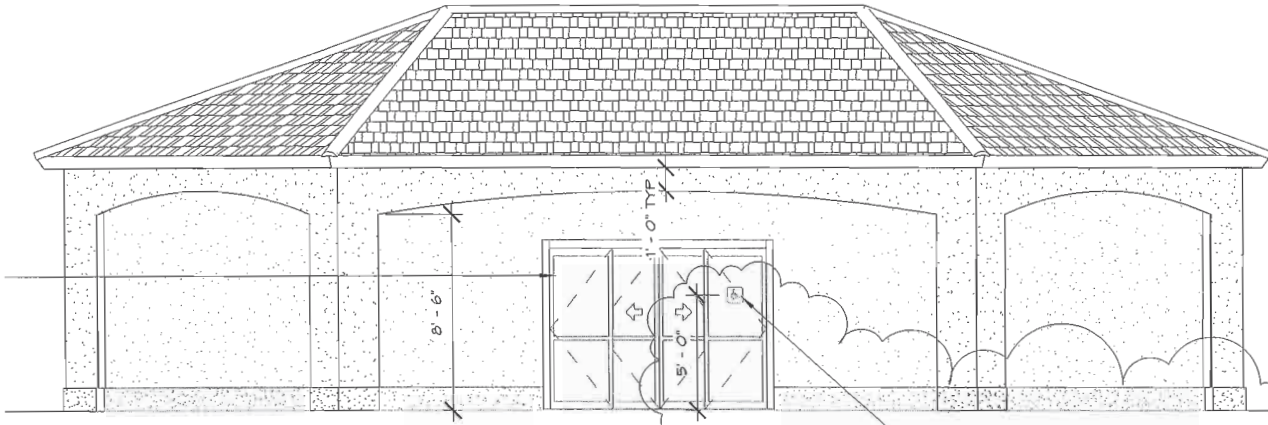
PLAN SET#
 17724
 DATE
 06/08/09
 REVISIONS
 REV. DATE BY
 DRAWN BY:
 RF
 SHEET NO.
 KITE CONNECTION
 HUNTINGTON BEACH, CALIFORNIA
 EXTERIOR ELEVATIONS

PRELIMINARY

A4.2



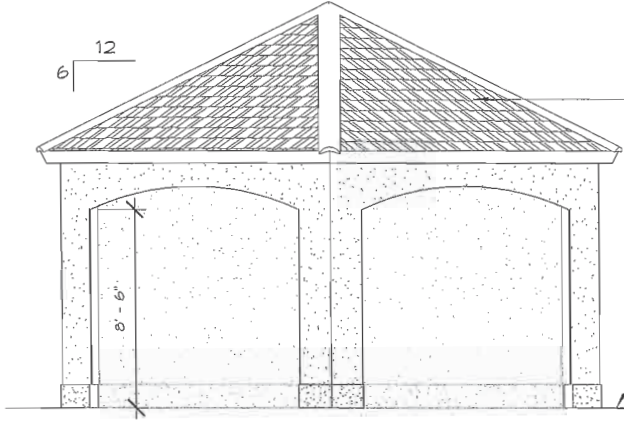
10'-0" W x 7'-8" H
SLIDING ALUMINUM
ENTRANCE DOOR



① SOUTH ELEVATION
3/16" = 1'-0"

ADA ENTRANCE SIGNAGE
PER CBC & LOCAL CODES

NOTE:
SEE BUILDING SPECIFICATIONS PROVIDED
BY ROMTEC FOR ALL SIDING & TRIM
COLORS & FINISHES



② WEST ELEVATION
3/16" = 1'-0"

CONCRETE TILE ROOFING

EXISTING CONCRETE PIER DECK

©2004 ROMTEC, INC. ALL RIGHTS RESERVED. THESE PLANS AND DRAWINGS MAY NOT BE REPRODUCED, ADAPTED OR FURTHER DISTRIBUTED, AND NO BUILDINGS MAY BE CONSTRUCTED FROM THESE PLANS, WITHOUT THE WRITTEN PERMISSION OF ROMTEC, INC.

PROJECT: CUSTOM RESIDENTIAL BUILDING ON THE PIER
LET'S GO FISHING
HUNTINGTON BEACH, CALIFORNIA

PLAN SET: 17125

| REV. | DATE | BY | REVISIONS |
|------|----------|------|-----------|
| 1 | 10/21/09 | R.E. | |

DRAWN BY: RF

SHEET NO. A4.2

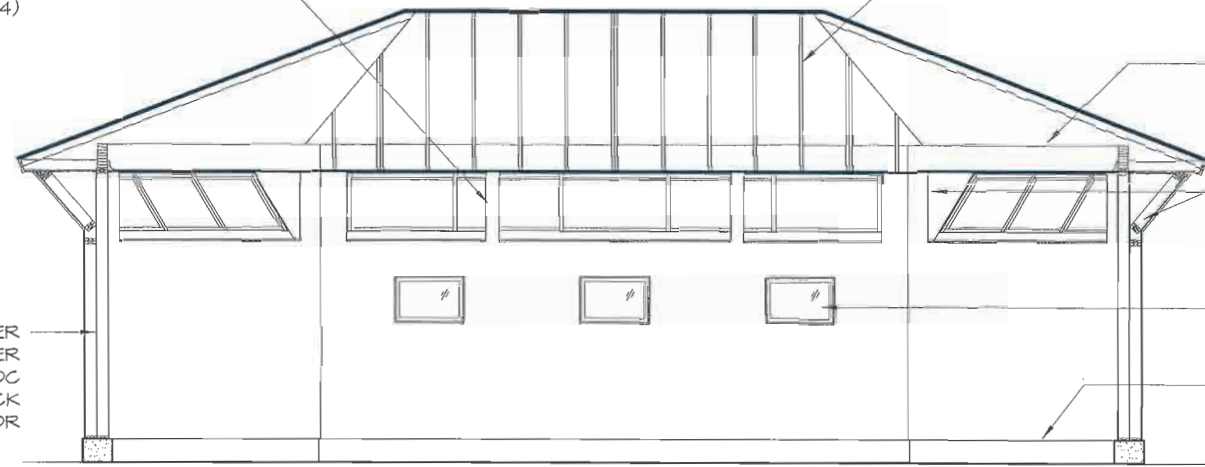
ROMTEC 18240 NORTH BARK ROAD - SUITE 100 - HUNTINGTON BEACH, CA 92648 (714) 466-0604 FAX (714) 466-0600

HCE INC ARCHITECTS, ENGINEERS SURVEYORS & PLANNERS
2310 West Huntington Drive, Orange, CA 92667 (714) 221-1188
19 1/2, W. Park Avenue, Portland, Oregon 97201 (503) 322-1447



KING STUDS FROM MAIN WALL WRAPPED IN 1/2" SHEETROCK TYP (4)

STUCCO SYSTEM OVER 7/16" OSB OVER 2x6 STUDS @ 16" OC WITH 1/2" SHEETROCK ON THE INTERIOR



PRE-ENGINEERED TRUSS ROOF

TRUSS SUPPORT GLULAM 5 1/8" x 12"

2x FRAMING IN CORNERS

AWNING WINDOWS, TYP (3)

CONCRETE CURB

① BUILDING SECTION 2
3/16" = 1'-0"

©2009 ROMTEC, INC. ALL RIGHTS RESERVED. THESE PLANS AND DRAWINGS MAY NOT BE REPRODUCED, ADAPTED OR FURTHER DISTRIBUTED, AND NO BUILDINGS MAY BE CONSTRUCTED FROM THESE PLANS, WITHOUT THE WRITTEN PERMISSION OF ROMTEC, INC.

PROJECT: CUSTOM RECREATIONAL BUILDINGS ON THE PIER
 SURF CITY STORE
 HUNTINGTON BEACH, CALIFORNIA

PLAN SET# 17732
 DATE: 06/08/09
 REVISIONS
 REV. DATE BY
 DRAWN BY: RF
 SHEET NO.

HGE INC ARCHITECTS, ENGINEERS, SURVEYORS, & PLANNERS
 1111 W. UNIVERSITY BLVD., SUITE 100
 HUNTINGTON BEACH, CA 92648
 (714) 841-2000 FAX (714) 841-2000

ROMTEC INDUSTRIALS, INC. 20090803_001810
 (914) 884-8441 FAX (914) 884-8000

BUILDING SECTIONS

A3.2