

Interior Finish - Unity Tile Option

The following is an example of the Romtec interior Floor finish - tile Option 3.

Specifications

- 12" x 24" Daltile Unity Unpolished Field Tile
- 3" x 12" Daltile Unity Bullnose tile
- 6" x 12" Daltile Unity Cove Base
 - *Creates a more uniform visual for contemporary minimalist look.*
 - *Offers the high performance of double-load ColorBody™ porcelain.*
- GROUT: Mapei® Kerapoxy® is a premium-grade, water-cleanable, 100%-solids, high-strength epoxy mortar and chemical-resistant nonsagging grout.

Color Scheme 1

Daltile Unity:
Avorio P400



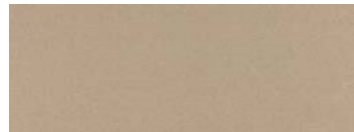
01 – Alabaster



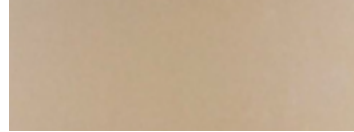
Unpolished Avorio

Color Scheme 2

Daltile Unity:
Tobacco P403



105 – Driftwood



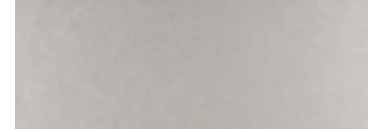
Unpolished Tobacco

Color Scheme 3

Daltile Unity:
Ashgrey P405



02- Pewter



Unpolished Ashgrey