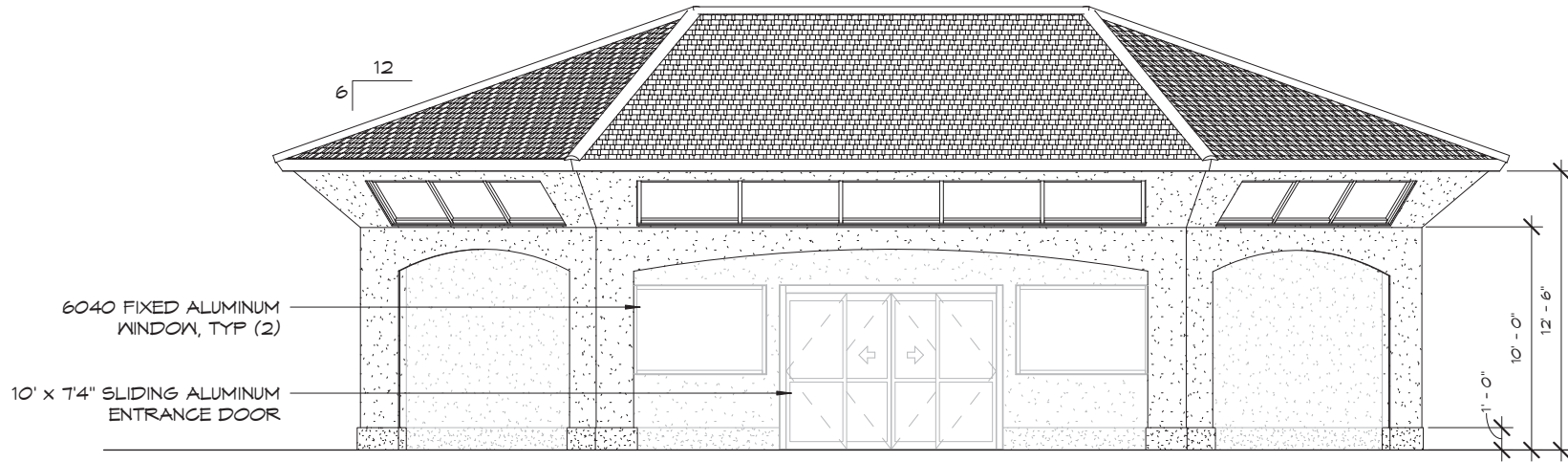
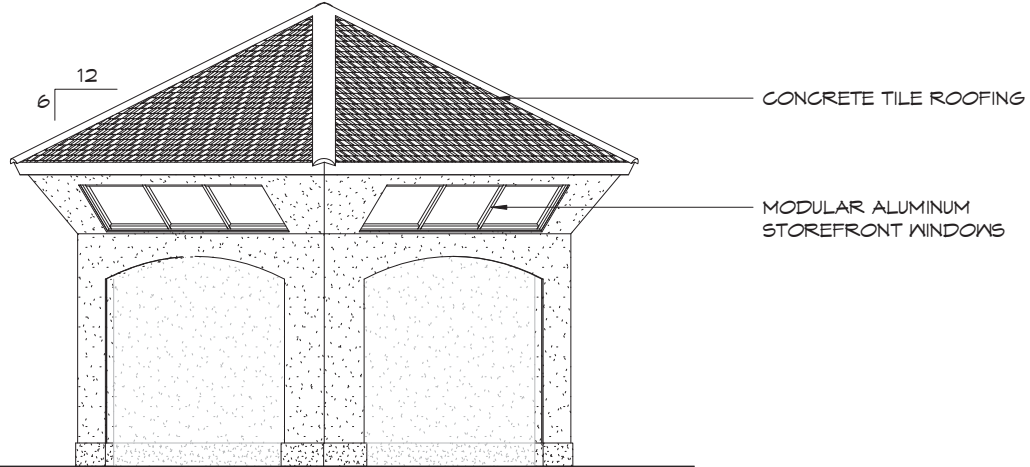


DRAFT
NOT FOR
CONSTRUCTION



① SOUTH ELEVATION
3/16" = 1'-0"



② WEST ELEVATION
3/16" = 1'-0"

©2004 ROMTEC, INC. ALL RIGHTS RESERVED. THESE PLANS AND DRAWINGS MAY NOT BE REPRODUCED, ADAPTED OR FURTHER DISTRIBUTED, AND NO BUILDINGS MAY BE CONSTRUCTED FROM THESE PLANS, WITHOUT THE WRITTEN PERMISSION OF ROMTEC, INC.

HGE
INC
INC
ARCHITECTS, ENGINEERS,
SURVEYORS, & PLANNERS
3700 Park Avenue, Suite 200, Oregon, OR 97122 (503) 255-1100
1975 N. 10th Street, Portland, Oregon 97227 (503) 252-1000

ROMTEC
1820 N.W. 10th Street, Portland, OR 97209
(503) 252-1000 FAX (503) 252-1000

PROJECT: CUSTOM HEXAGONAL BUILDING ON THE PIER
KITE CONNECTION
HUNTINGTON BEACH, CALIFORNIA
SHEET TITLE:
EXTERIOR ELEVATIONS

PLAN SET#
17724

DATE:
06/08/09

REVISIONS

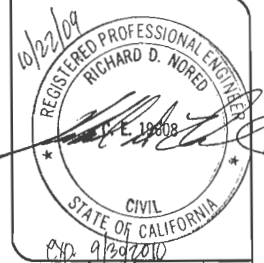
REV.	DATE	BY

DRAWN BY:
RF

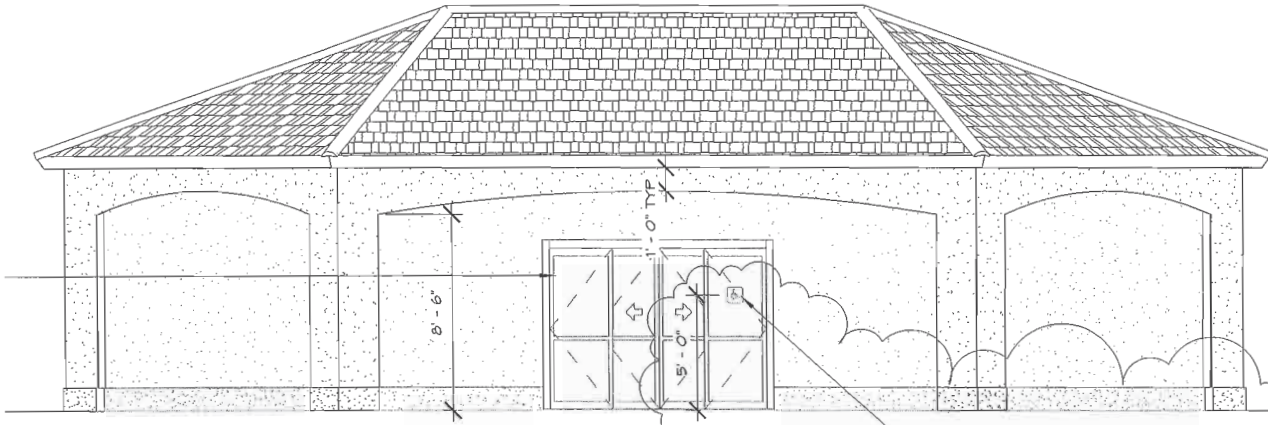
SHEET NO.

PRELIMINARY

A4.2



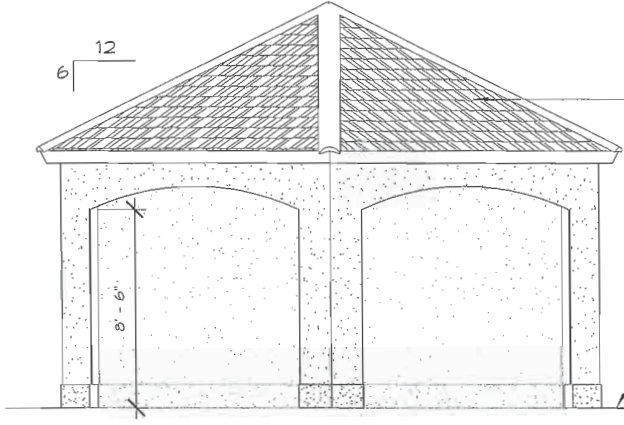
10'-0" W x 7'-8" H
SLIDING ALUMINUM
ENTRANCE DOOR



① SOUTH ELEVATION
3/16" = 1'-0"

ADA ENTRANCE SIGNAGE
PER CBC & LOCAL CODES

NOTE:
SEE BUILDING SPECIFICATIONS PROVIDED
BY ROMTEC FOR ALL SIDING & TRIM
COLORS & FINISHES



② WEST ELEVATION
3/16" = 1'-0"

CONCRETE TILE ROOFING

EXISTING CONCRETE PIER DECK

©2004 ROMTEC, INC. ALL RIGHTS RESERVED. THESE PLANS AND DRAWINGS MAY NOT BE REPRODUCED, ADAPTED OR FURTHER DISTRIBUTED, AND NO BUILDINGS MAY BE CONSTRUCTED FROM THESE PLANS, WITHOUT THE WRITTEN PERMISSION OF ROMTEC, INC.

PROJECT: CUSTOM RESIDENTIAL BUILDING ON THE PIER
LET'S GO FISHING
HUNTINGTON BEACH, CALIFORNIA

PLAN SET # 17125

REV.	DATE	BY	REVISIONS
1	10/21/09	R.E.	

DRAWN BY: RF

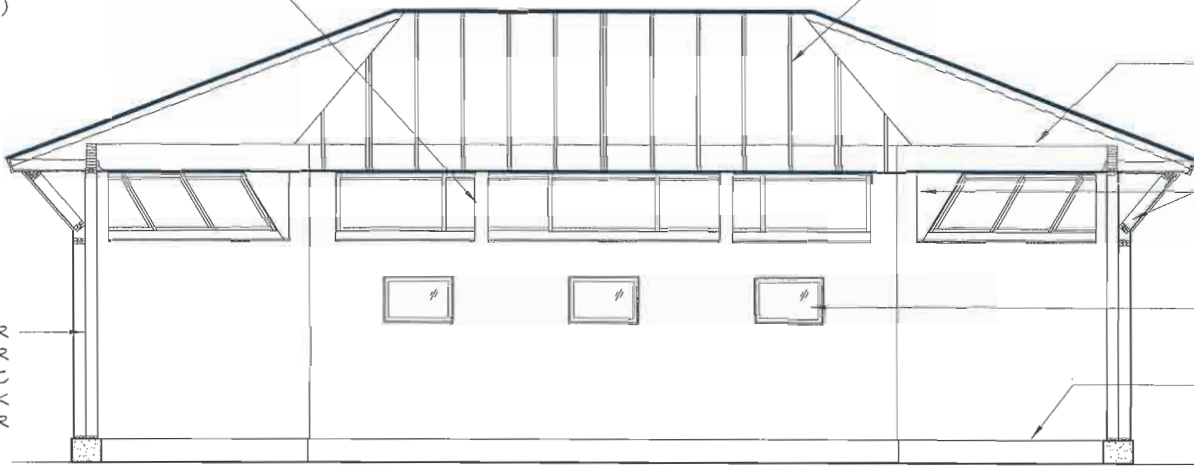
SHEET NO. A4.2

ROMTEC 18240 NORTH BANK ROAD - DORSETT, CA 94920 (415) 466-0604

HCE INC ARCHITECTS, ENGINEERS SURVEYORS & PLANNERS
2340 West Alhambra Avenue, Orange, CA 92668 (714) 224-1188
19 1/2, W. 19th Avenue, Portland, Oregon 97208 (503) 322-1447



KING STUDS FROM MAIN WALL
WRAPPED IN 1/2" SHEETROCK
TYP (4)



PRE-ENGINEERED
TRUSS ROOF

TRUSS SUPPORT
GLULAM 5 1/8" x 12"

2X FRAMING
IN CORNERS

AWNING WINDOWS,
TYP (3)

CONCRETE CURB

STUCCO SYSTEM OVER
7/16" OSB OVER
2X6 STUDS @ 16" OC
WITH 1/2" SHEETROCK
ON THE INTERIOR

① BUILDING SECTION 2
3/16" = 1'-0"

©2009 ROMTEC, INC. ALL RIGHTS RESERVED. THESE PLANS AND DRAWINGS MAY NOT BE REPRODUCED, ADAPTED OR FURTHER DISTRIBUTED, AND NO BUILDINGS MAY BE CONSTRUCTED FROM THESE PLANS, WITHOUT THE WRITTEN PERMISSION OF ROMTEC, INC.

PROJECT: CUSTOM RECREATIONAL BUILDINGS ON THE PIER
SURF CITY STORE
HUNTINGTON BEACH, CALIFORNIA

PLAN SET# 17732

DATE: 06/08/09

REVISIONS

REV.	DATE	BY

DRAWN BY: RF

SHEET NO. A3.2

HGE ARCHITECTS, ENGINEERS, SURVEYORS, & PLANNERS
100 W. UNIVERSITY BLVD., SUITE 200
HUNTINGTON BEACH, CA 92648
(714) 841-2000

ROMTEC
INDUSTRIALS, INC. 2008
10111 160th Ave. S. #100
BENTON, MN 55008
(612) 871-2000

BUILDING SECTIONS