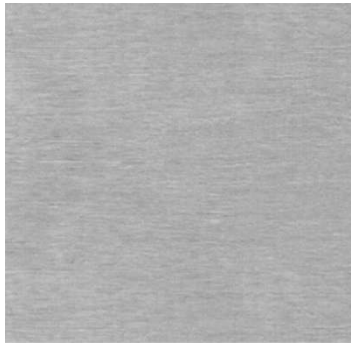


Stainless Steel Restroom Partition

The following is an example of the Romtec Stainless Steel Restroom Partition:

Specifications

- 1" (25 mm) thick door and panel
- 1-1/4" (32 mm) thick pilaster
- Heavy duty cast, chrome plated non-ferrous hardware
- All corners welded for strength, longevity and rigidity



Brushed Stainless Steel