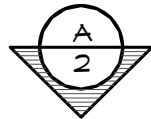


LEGEND		
SYMBOL	DESCRIPTION	AREA/ QUANTITY
	GABLE VENT	6
	EXTERIOR WALL LIGHTS	3
	INTERIOR CEILING LIGHTS	6
	FLOOR DRAIN	3
	ELECTRICAL OUTLET	2

THESE PLAN VIEW AND ELEVATION DRAWINGS ARE A PRELIMINARY ARCHITECTURAL REPRESENTATION OF THE BUILDING. ALL DIMENSIONS, FEATURES AND COMPONENTS SHOWN ON THESE PRELIMINARY DRAWINGS MAY OR MAY NOT BE PART OF THE QUOTE. PLEASE REFER TO THE "SCOPE OF SUPPLY AND SERVICES" LETTER PROVIDED WITH YOUR QUOTE FOR ROMTEC'S PROPOSED SCOPE OF SUPPLY.

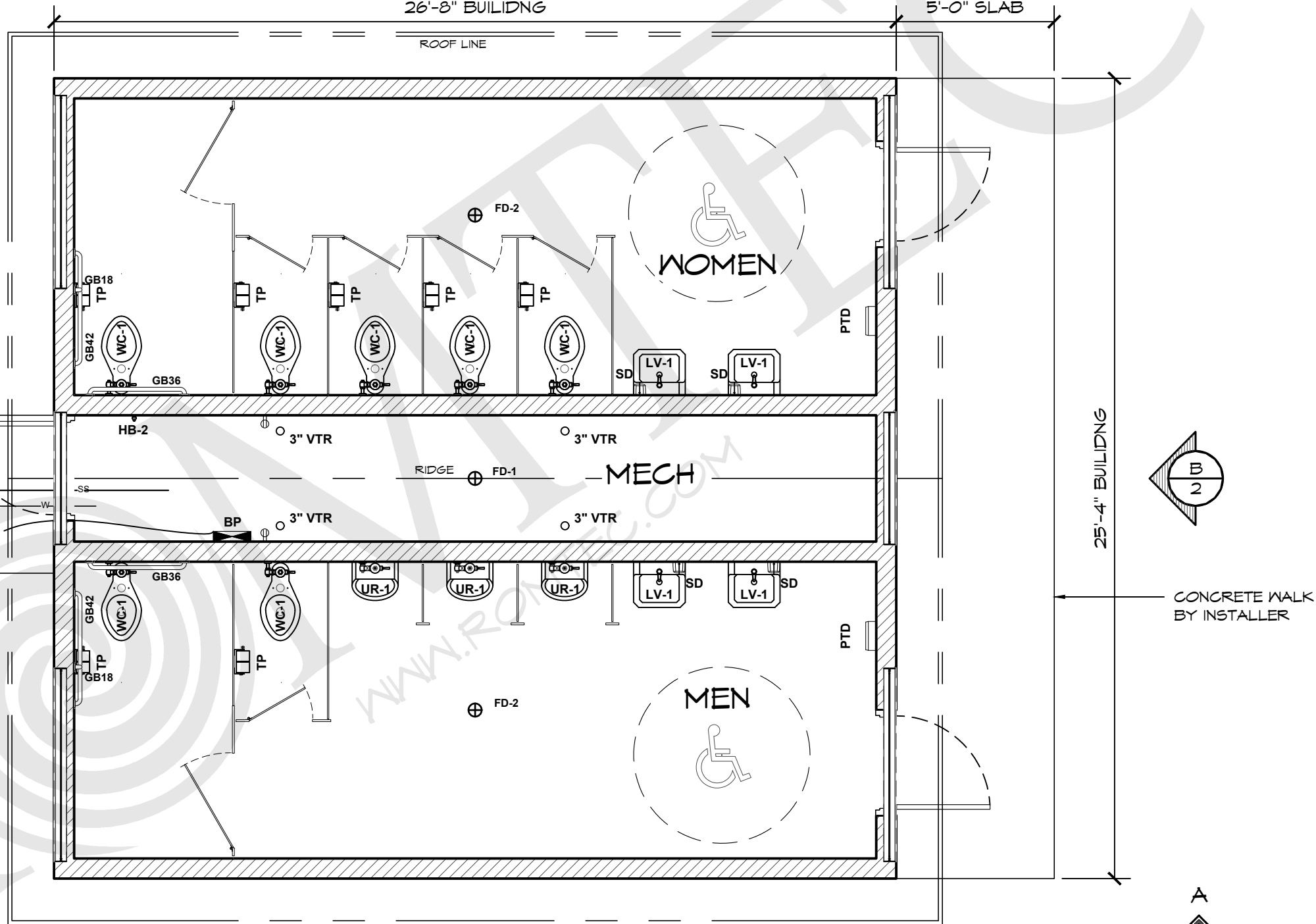
WALL TYPE SCHEDULE	
	8" REINFORCED CONCRETE MASONRY BLOCK WALL WITH MORTAR JOINTS, GROUTED SOLID ALL CELLS RUNNING BOND PATTERN.



26'-8" BUILDING

5'-0" SLAB

ROOF LINE



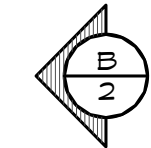
TO SANITARY SEWER SYSTEM CONFIRMED BY OWNER

4" SEWER

1 1/2" WATER PIPE
WATER SERVICE
INTO BUILDING

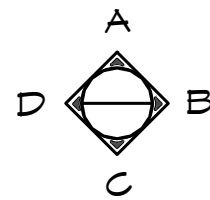
UNDERGROUND ELECTRICAL SERVICE VERIFY REQUIREMENTS FOR TYING INTO SERVICE UTILITY EQUIPMENT BY OTHERS.

1 FLOOR PLAN
SCALE: 1/4" = 1'-0"



25'-4" BUILDING

CONCRETE WALK BY INSTALLER

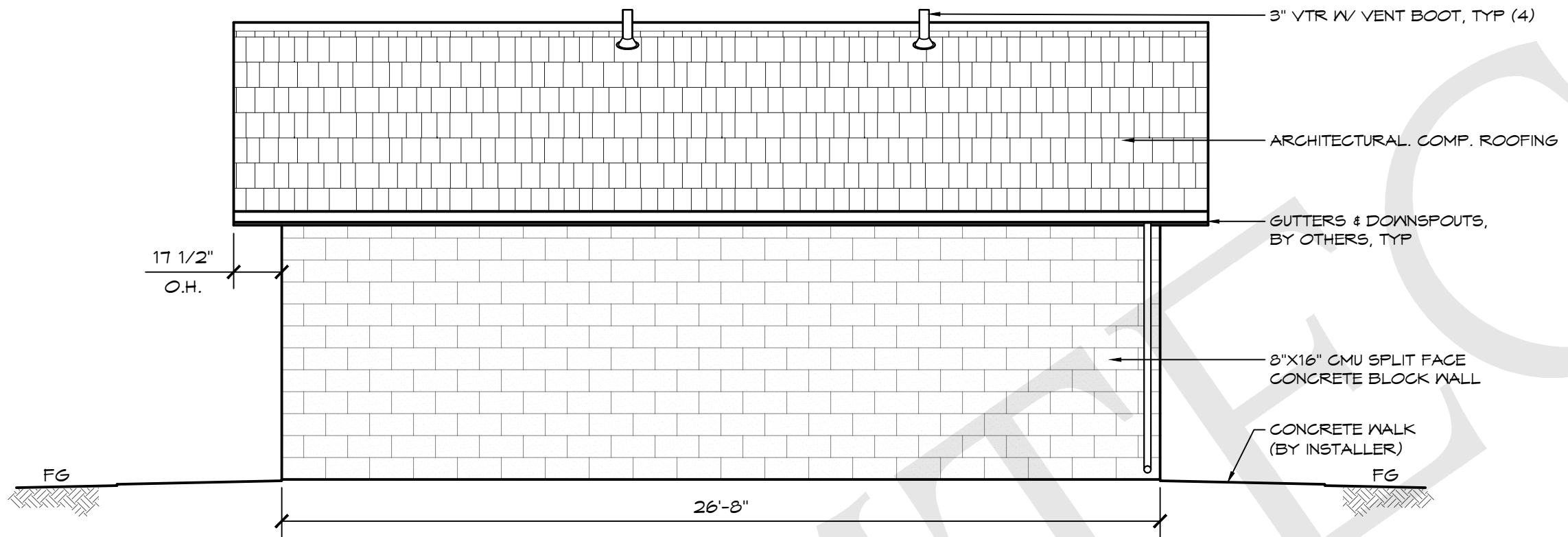


ROMTEC
18240 NORTH BANK ROAD - ROSEBURG, OR 97470
(541) 496-3541 FAX (541) 496-0803

PRELIMINARY

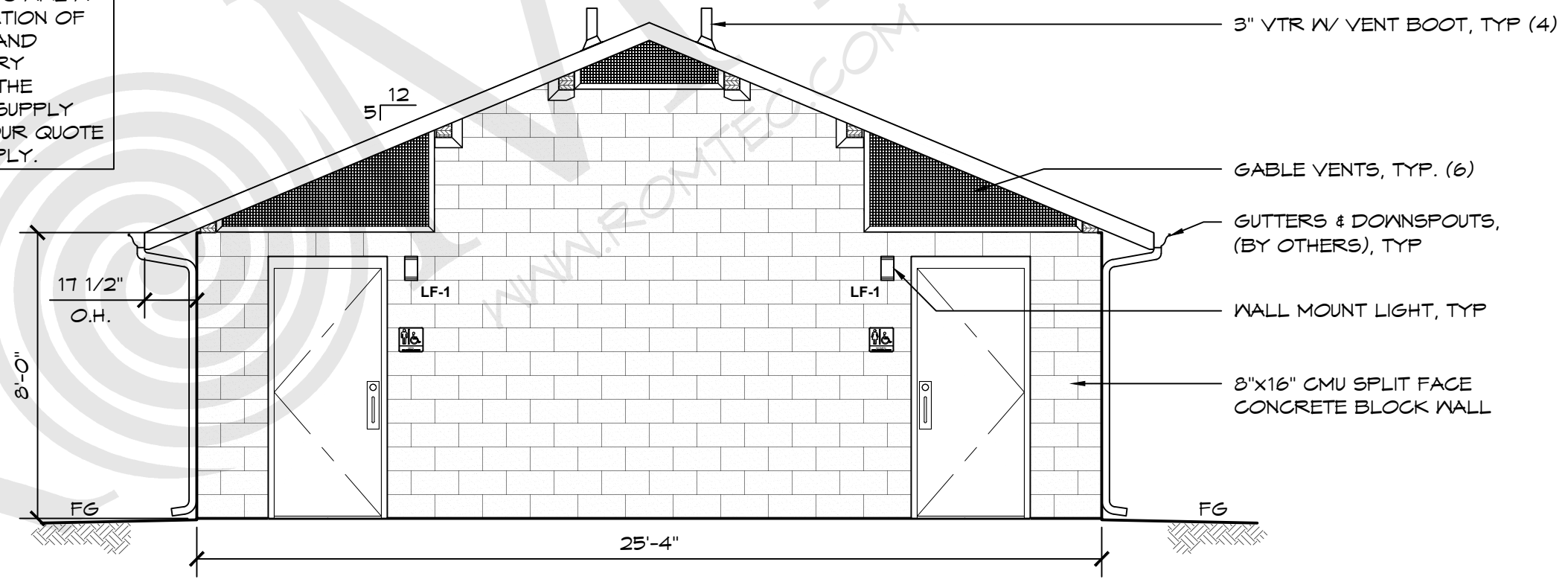
PROJECT: CUSTOMER PROJECT LOCATION
PROJECT#: XXXX
DATE: 00/00/11
REVISIONS
REV. DATE BY
DRAWN BY: JS

SHEET NO. **01**



A ELEVATION VIEW
SCALE: 1/4" = 1'-0"

THESE PLAN VIEW AND ELEVATION DRAWINGS ARE A PRELIMINARY ARCHITECTURAL REPRESENTATION OF THE BUILDING. ALL DIMENSIONS, FEATURES AND COMPONENTS SHOWN ON THESE PRELIMINARY DRAWINGS MAY OR MAY NOT BE PART OF THE QUOTE. PLEASE REFER TO THE "SCOPE OF SUPPLY AND SERVICES" LETTER PROVIDED WITH YOUR QUOTE FOR ROMTEC'S PROPOSED SCOPE OF SUPPLY.



B ELEVATION VIEW
SCALE: 1/4" = 1'-0"

© 2022 ROMTEC, INC. ALL RIGHTS RESERVED. THESE PLANS AND DRAWINGS MAY NOT BE REPRODUCED, ADAPTED OR FURTHER DISTRIBUTED, AND NO BUILDINGS MAY BE CONSTRUCTED FROM THESE PLANS, WITHOUT THE WRITTEN PERMISSION OF ROMTEC, INC.

PROJECT: CUSTOMER PROJECT LOCATION
PROJECT#: XXXX
DATE: 00/00/11
REVISIONS
REV. DATE BY
DRAWN BY: JS

SHEET TITLE: ELEVATION VIEW