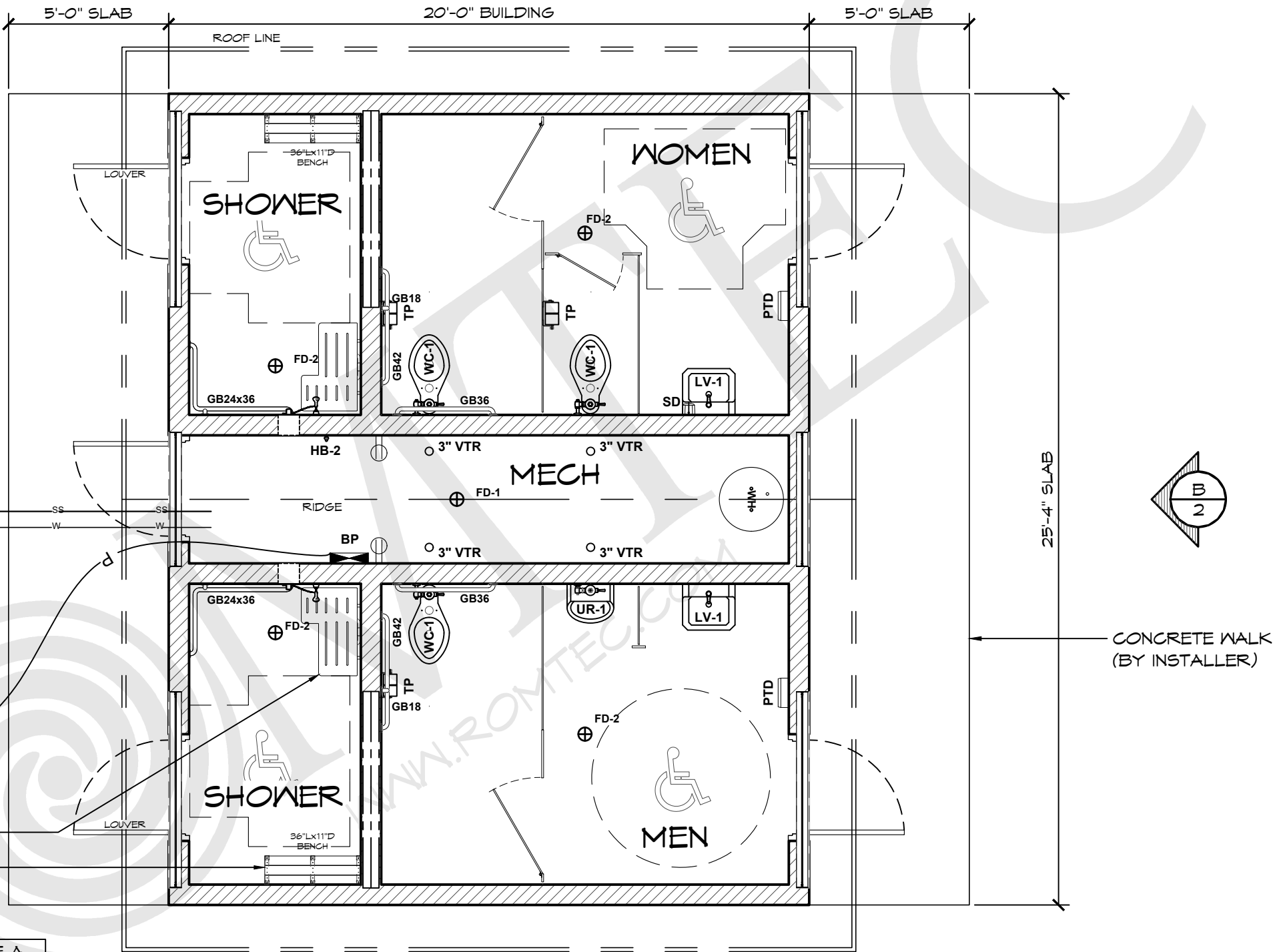


LEGEND		
SYMBOL	DESCRIPTION	AREA/ QUANTITY
	GABLE WINDOW	2
	GABLE VENT	2
	RIDGE VENT	2
	2x6 WOOD FILLER WALL	2
	EXTERIOR WALL LIGHTS	5
	INTERIOR CEILING LIGHTS	6
	FLOOR DRAIN	5
	ELECTRICAL OUTLET	2
	ROMTEC VENTILATION PACKAGE	1

WALL TYPE SCHEDULE	
	8" REINFORCED CONCRETE MASONRY BLOCK WALL WITH MORTAR JOINTS, GROUTED SOLID ALL CELLS RUNNING BOND PATTERN.



TO SANITARY SEWER
SYSTEM CONFIRMED
BY OWNER

4" SEWER

1 1/2" WATER PIPE
WATER SERVICE
INTO BUILDING

UNDERGROUND ELECTRICAL
SERVICE VERIFY REQUIREMENTS
FOR TYING INTO SERVICE UTILITY
EQUIPMENT BY OTHERS.

PHENOLIC FOLD-UP SHOWER SEAT, TYP (2)

ROMTEC SHOWER BENCH
STEEL FRAME WITH CEDAR SLATS, TYP (2)

THESE PLAN VIEW AND ELEVATION DRAWINGS ARE A PRELIMINARY ARCHITECTURAL REPRESENTATION OF THE BUILDING. ALL DIMENSIONS, FEATURES AND COMPONENTS SHOWN ON THESE PRELIMINARY DRAWINGS MAY OR MAY NOT BE PART OF THE QUOTE. PLEASE REFER TO THE "SCOPE OF SUPPLY AND SERVICES" LETTER PROVIDED WITH YOUR QUOTE FOR ROMTEC'S PROPOSED SCOPE OF SUPPLY.

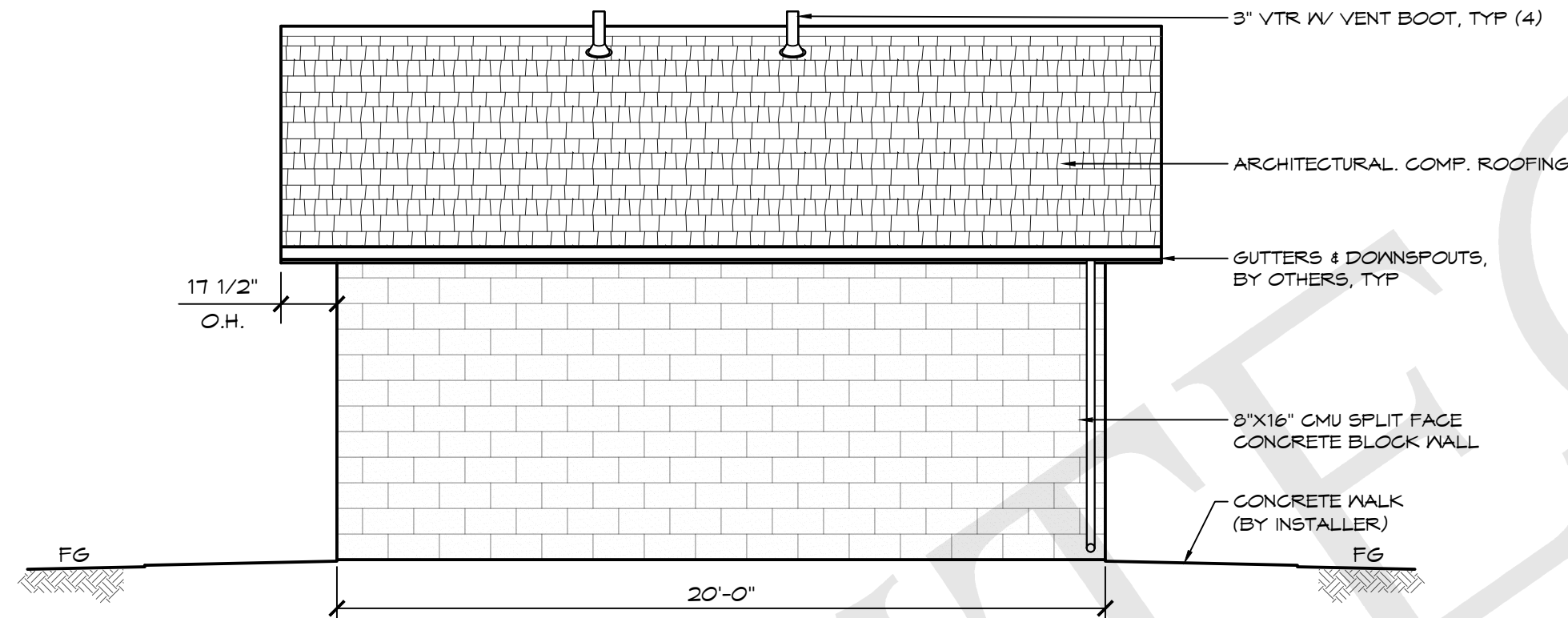
1 FLOOR PLAN
SCALE: 1/4" = 1'-0"

© 2022 ROMTEC, INC. ALL RIGHTS RESERVED. THESE PLANS AND DRAWINGS MAY NOT BE REPRODUCED, ADAPTED OR FURTHER DISTRIBUTED, AND NO BUILDINGS MAY BE CONSTRUCTED FROM THESE PLANS, WITHOUT THE WRITTEN PERMISSION OF ROMTEC, INC.

18240 NORTH BANK ROAD - ROSEBURG, OR 97470
(541) 496-3541 FAX (541) 496-0803

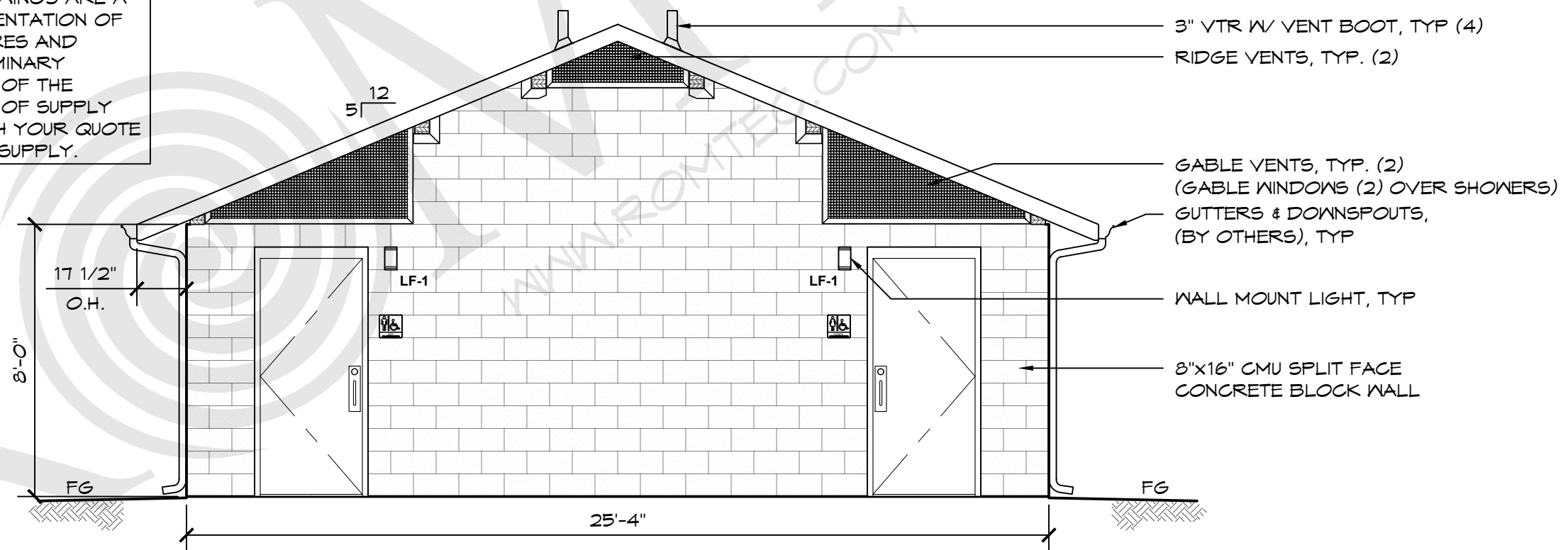
PRELIMINARY

PROJECT:	CUSTOMER PROJECT LOCATION	
PROJECT#:	XXXX	
DATE:	00/00/11	
REVISIONS		
REV.	DATE:	BY:
DRAWN BY:	JS	
SHEET NO.	01	



A ELEVATION VIEW
SCALE: 1/4" = 1'-0"

THESE PLAN VIEW AND ELEVATION DRAWINGS ARE A PRELIMINARY ARCHITECTURAL REPRESENTATION OF THE BUILDING. ALL DIMENSIONS, FEATURES AND COMPONENTS SHOWN ON THESE PRELIMINARY DRAWINGS MAY OR MAY NOT BE PART OF THE QUOTE. PLEASE REFER TO THE "SCOPE OF SUPPLY AND SERVICES" LETTER PROVIDED WITH YOUR QUOTE FOR ROMTEC'S PROPOSED SCOPE OF SUPPLY.



B ELEVATION VIEW
SCALE: 1/4" = 1'-0"

© 2022 ROMTEC, INC. ALL RIGHTS RESERVED. THESE PLANS AND DRAWINGS MAY NOT BE REPRODUCED, ADAPTED OR FURTHER DISTRIBUTED, AND NO BUILDINGS MAY BE CONSTRUCTED FROM THESE PLANS, WITHOUT THE WRITTEN PERMISSION OF ROMTEC, INC.

ROMTEC

18240 NORTH BANK ROAD - ROSEBURG, OR 97470
(541) 496-3541 FAX (541) 496-0803

PRELIMINARY

PROJECT: CUSTOMER
PROJECT LOCATION

PROJECT#: XXXX

DATE: 00/00/11

REVISIONS

REV. DATE: BY:

DRAWN BY: JS

SHEET NO.

02