

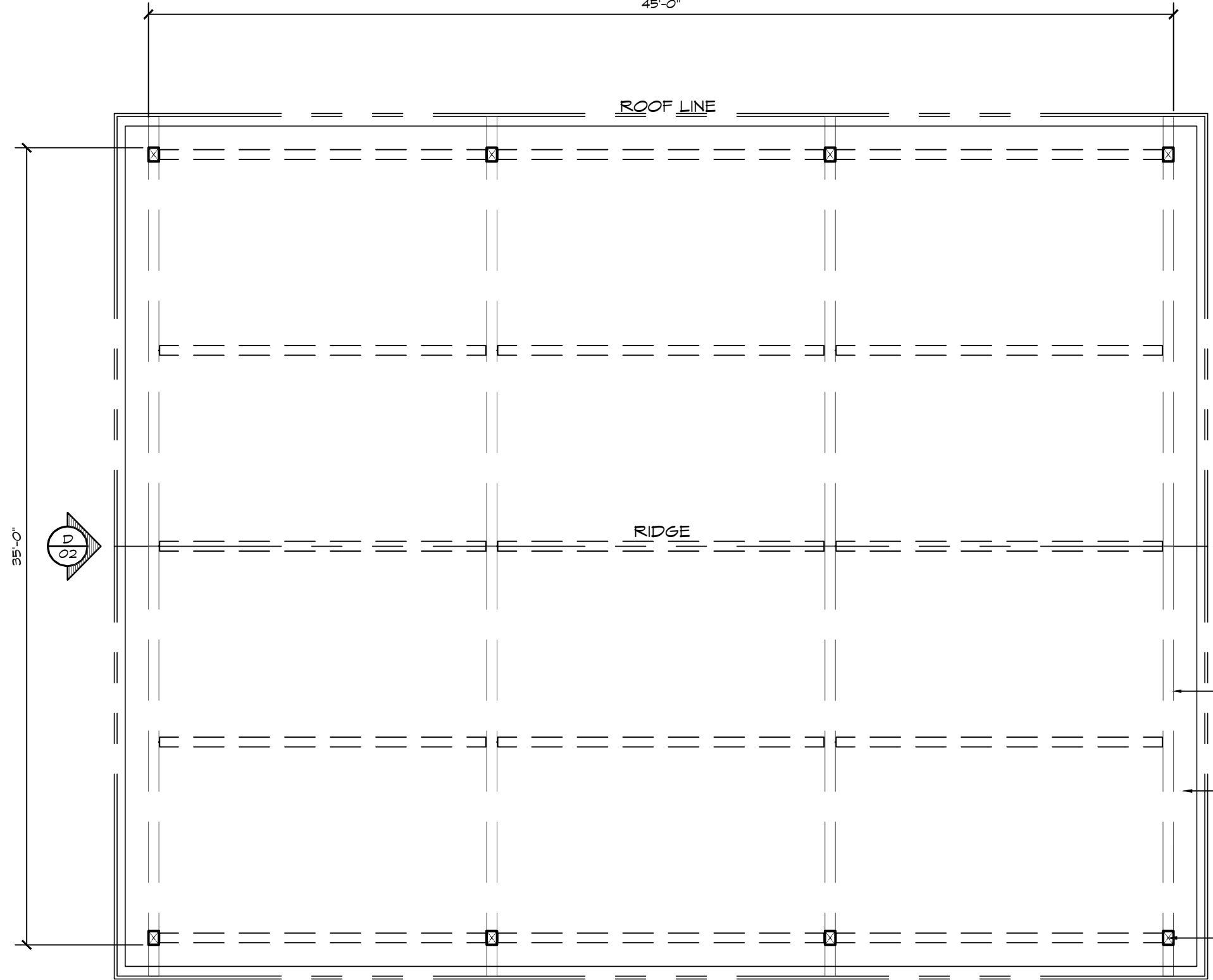


45'-0"

ROOF LINE

RIDGE

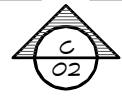
THESE PLAN VIEW AND ELEVATION DRAWINGS ARE A PRELIMINARY ARCHITECTURAL REPRESENTATION OF THE BUILDING. ALL DIMENSIONS, FEATURES AND COMPONENTS SHOWN ON THESE PRELIMINARY DRAWINGS MAY OR MAY NOT BE PART OF THE QUOTE. PLEASE REFER TO THE "SCOPE OF SUPPLY AND SERVICES" LETTER PROVIDED WITH YOUR QUOTE FOR ROMTEC'S PROPOSED SCOPE OF SUPPLY.



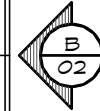
6x8 RESAWN TIMBER TRUSS, TYP. (4)

CONCRETE WALK (BY INSTALLER)

6x8 RESAWN TIMBER COLUMNS, TYP. (8)



35'-0"

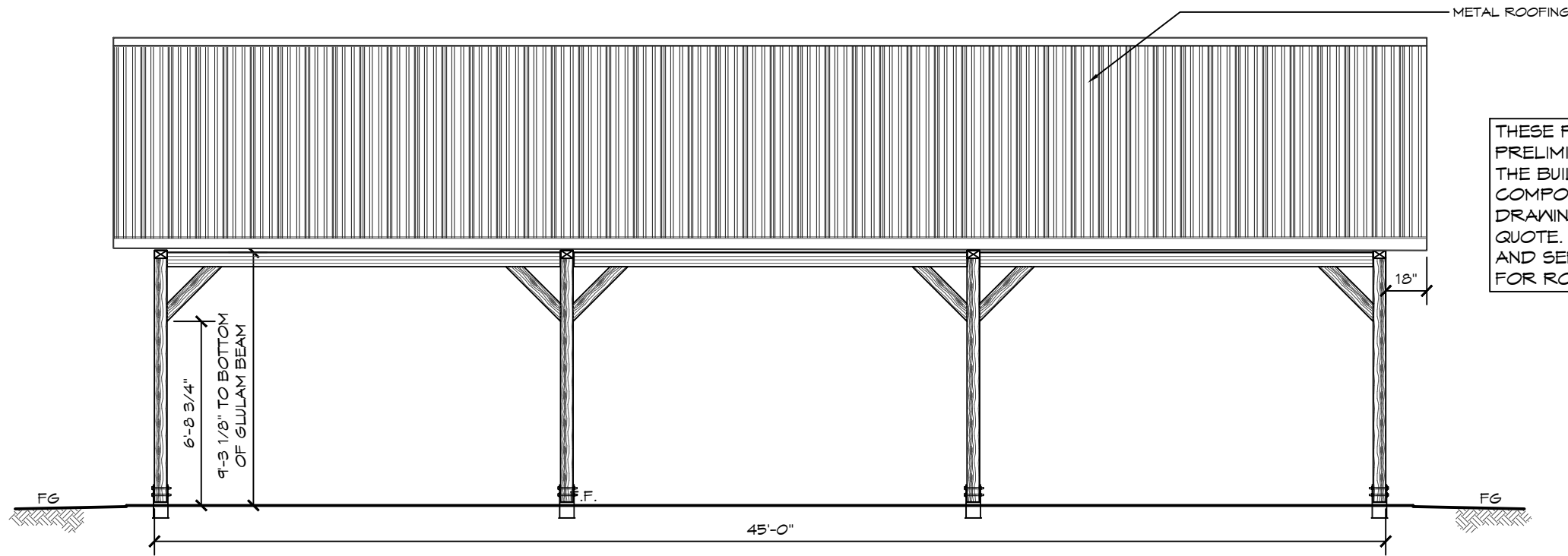


**ROMTEC**  
 18240 NORTH BANK ROAD - ROSEBURG, OR 97470  
 (541) 496-3541 FAX (541) 496-0803  
**PRELIMINARY**

© 2023 ROMTEC, INC. ALL RIGHTS RESERVED. THESE PLANS AND DRAWINGS MAY NOT BE REPRODUCED, ADAPTED OR FURTHER DISTRIBUTED, AND NO BUILDINGS MAY BE CONSTRUCTED FROM THESE PLANS, WITHOUT THE WRITTEN PERMISSION OF ROMTEC, INC.

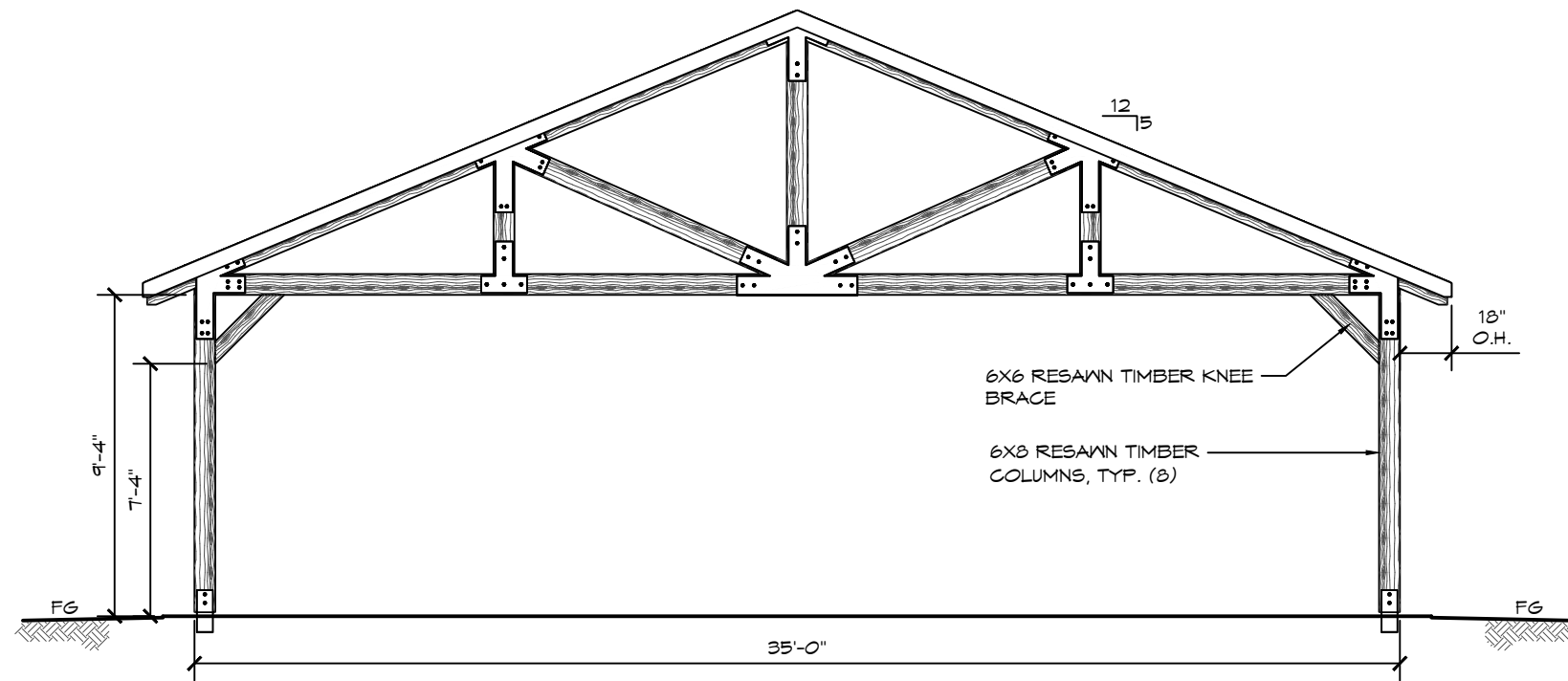
PROJECT: CUSTOMER PROJECT LOCATION  
 SHEET TITLE: FLOOR PLAN  
 PROJECT#: XXXX  
 DATE: 00/00/11  
 REVISIONS  
 REV. DATE BY  
 DRAWN BY: JS

SHEET NO. 01



THESE PLAN VIEW AND ELEVATION DRAWINGS ARE A PRELIMINARY ARCHITECTURAL REPRESENTATION OF THE BUILDING. ALL DIMENSIONS, FEATURES AND COMPONENTS SHOWN ON THESE PRELIMINARY DRAWINGS MAY OR MAY NOT BE PART OF THE QUOTE. PLEASE REFER TO THE "SCOPE OF SUPPLY AND SERVICES" LETTER PROVIDED WITH YOUR QUOTE FOR ROMTEC'S PROPOSED SCOPE OF SUPPLY.

**A C** ELEVATION VIEW  
SCALE: 3/16" = 1'-0"



**B D** ELEVATION VIEW  
SCALE: 3/16" = 1'-0"

**ROMTEC**

18240 NORTH BANK ROAD - ROSEBURG, OR 97470  
(541) 496-3541 FAX (541) 496-0803

**PRELIMINARY**

© 2023 ROMTEC, INC. ALL RIGHTS RESERVED. THESE PLANS AND DRAWINGS MAY NOT BE REPRODUCED, ADAPTED OR FURTHER DISTRIBUTED, AND NO BUILDINGS MAY BE CONSTRUCTED FROM THESE PLANS, WITHOUT THE WRITTEN PERMISSION OF ROMTEC, INC.

PROJECT: CUSTOMER PROJECT LOCATION  
PROJECT#: XXXX  
DATE: 00/00/11  
REVISIONS  
REV. DATE BY  
DRAWN BY: JS

SHEET NO. 02