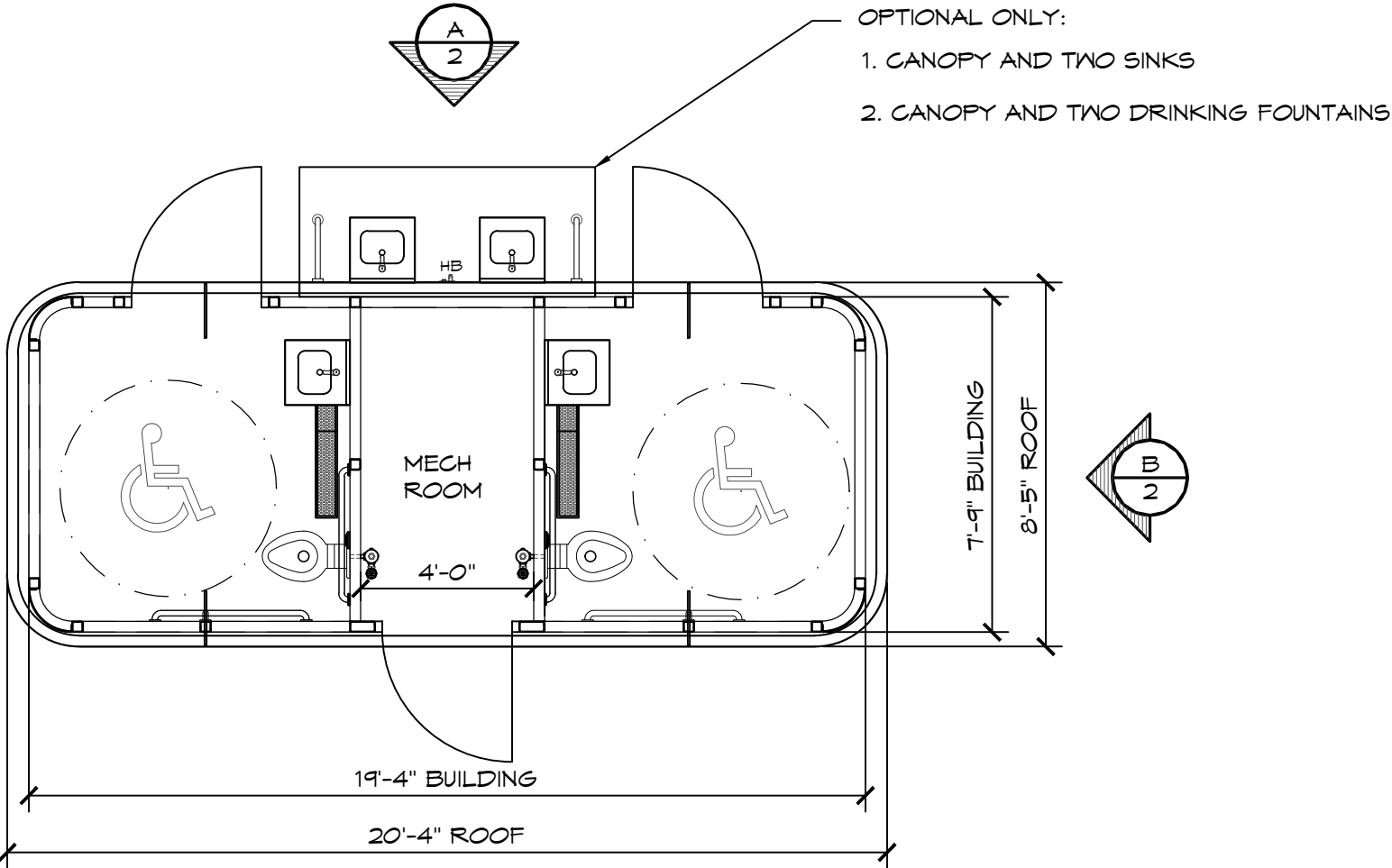


LEGEND		
SYMBOL	DESCRIPTION	AREA/ QUANTITY
	INTERIOR CEILING LIGHTS	3
THB	WALL HYDRANT	1
TP	TWO ROLL TP DISPENSER	2

TRENCH DRAIN, TYP 2

THESE PLAN VIEW AND ELEVATION DRAWINGS ARE A PRELIMINARY ARCHITECTURAL REPRESENTATION OF THE BUILDING. ALL DIMENSIONS, FEATURES AND COMPONENTS SHOWN ON THESE PRELIMINARY DRAWINGS MAY OR MAY NOT BE PART OF THE QUOTE. PLEASE REFER TO THE "SCOPE OF SUPPLY AND SERVICES" LETTER PROVIDED WITH YOUR QUOTE FOR ROMTEC'S PROPOSED SCOPE OF SUPPLY.



1

FLOOR PLAN

SCALE: 1/4" = 1'-0"

A

B

C

D

© 2018 ROMTEC, INC. ALL RIGHTS RESERVED. THESE PLANS AND DRAWINGS MAY NOT BE REPRODUCED, ADAPTED OR FURTHER DISTRIBUTED, AND NO BUILDINGS MAY BE CONSTRUCTED FROM THESE PLANS, WITHOUT THE WRITTEN PERMISSION OF ROMTEC, INC.

PROJECT: 4007 SIDEWALK DOUBLE RESTROOM-CURVED-SIDE ENTRY-SINK		
CUSTOMER PROJECT LOCATION		
SHEET TITLE: FLOOR PLAN		
PROJECT#: XXXX		
MODEL#: 4007		
DATE: 5/01/2018		
REVISIONS		
REV.	DATE:	BY
DRAWN BY: TH		

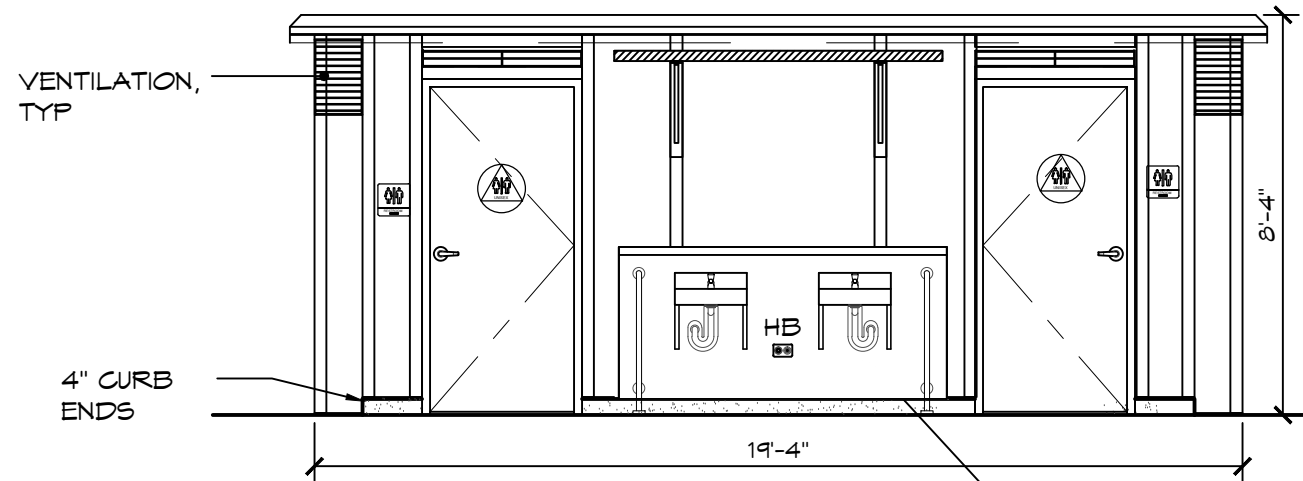
SHEET NO.



18240 NORTH BANK ROAD - ROSEBURG, OR 97470  
(541) 496-3541 FAX (541) 496-0803

PRELIMINARY

THESE PLAN VIEW AND ELEVATION DRAWINGS ARE A PRELIMINARY ARCHITECTURAL REPRESENTATION OF THE BUILDING. ALL DIMENSIONS, FEATURES AND COMPONENTS SHOWN ON THESE PRELIMINARY DRAWINGS MAY OR MAY NOT BE PART OF THE QUOTE. PLEASE REFER TO THE "SCOPE OF SUPPLY AND SERVICES" LETTER PROVIDED WITH YOUR QUOTE FOR ROMTEC'S PROPOSED SCOPE OF SUPPLY.

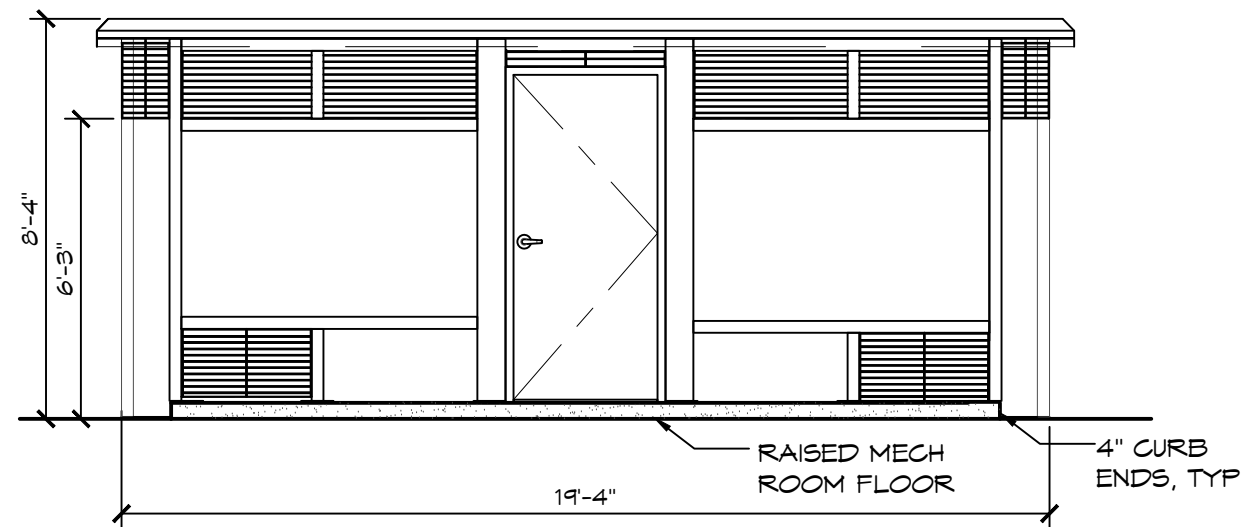


**ELEVATION VIEW**

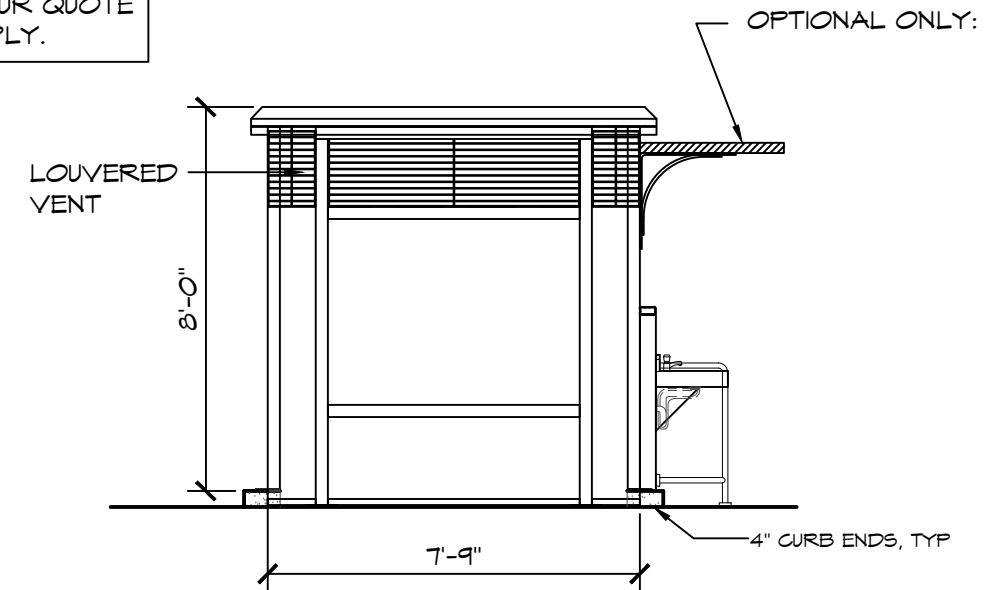
SCALE: 1/4" = 1'-0"

OPTIONAL ONLY:

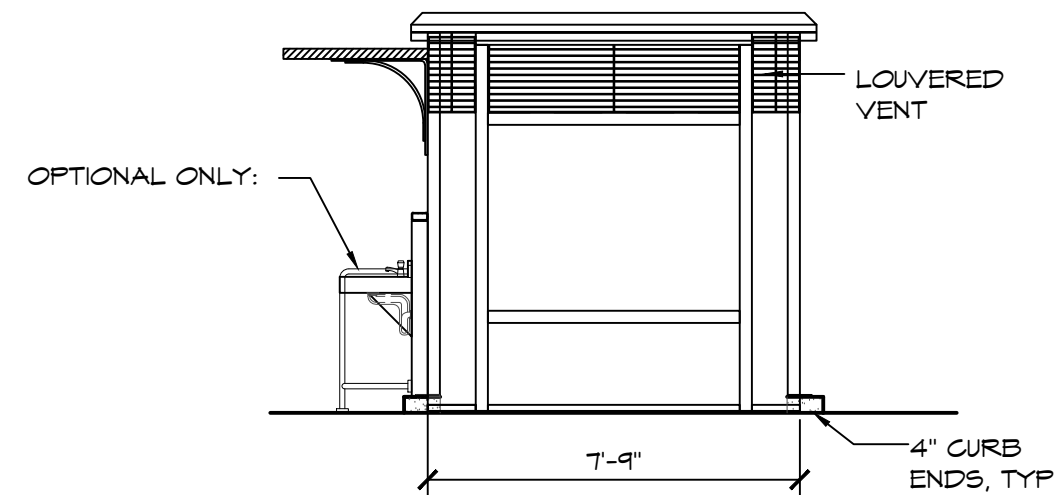
1. CANOPY AND TWO SINKS
2. CANOPY AND TWO DRINKING FOUNTAINS



**C ELEVATION VIEW**  
SCALE: 1/4" = 1'-0"



**B** ELEVATION VIEW  
SCALE: 1/4" = 1'-0"



**D** ELEVATION VIEW  
SCALE: 1/4" = 1'-0"

**ROMTEC**

18240 NORTH BANK ROAD - ROSEBURG, OR 97470  
(541) 496-3541 FAX (541) 496-0803

# PRELIMINARY

[illegible][illegible]

CUSTOMER	PROJECT	LOCATION	EST. TITLE:

SHEET TITLE: ELEVATIONS

PROJECT#:	XXXX
MODEL#:	4007
DATE:	5/01/2018
REVISIONS	

REV.	DATE:	BY

DRAWN BY: TH

SHEET NO.