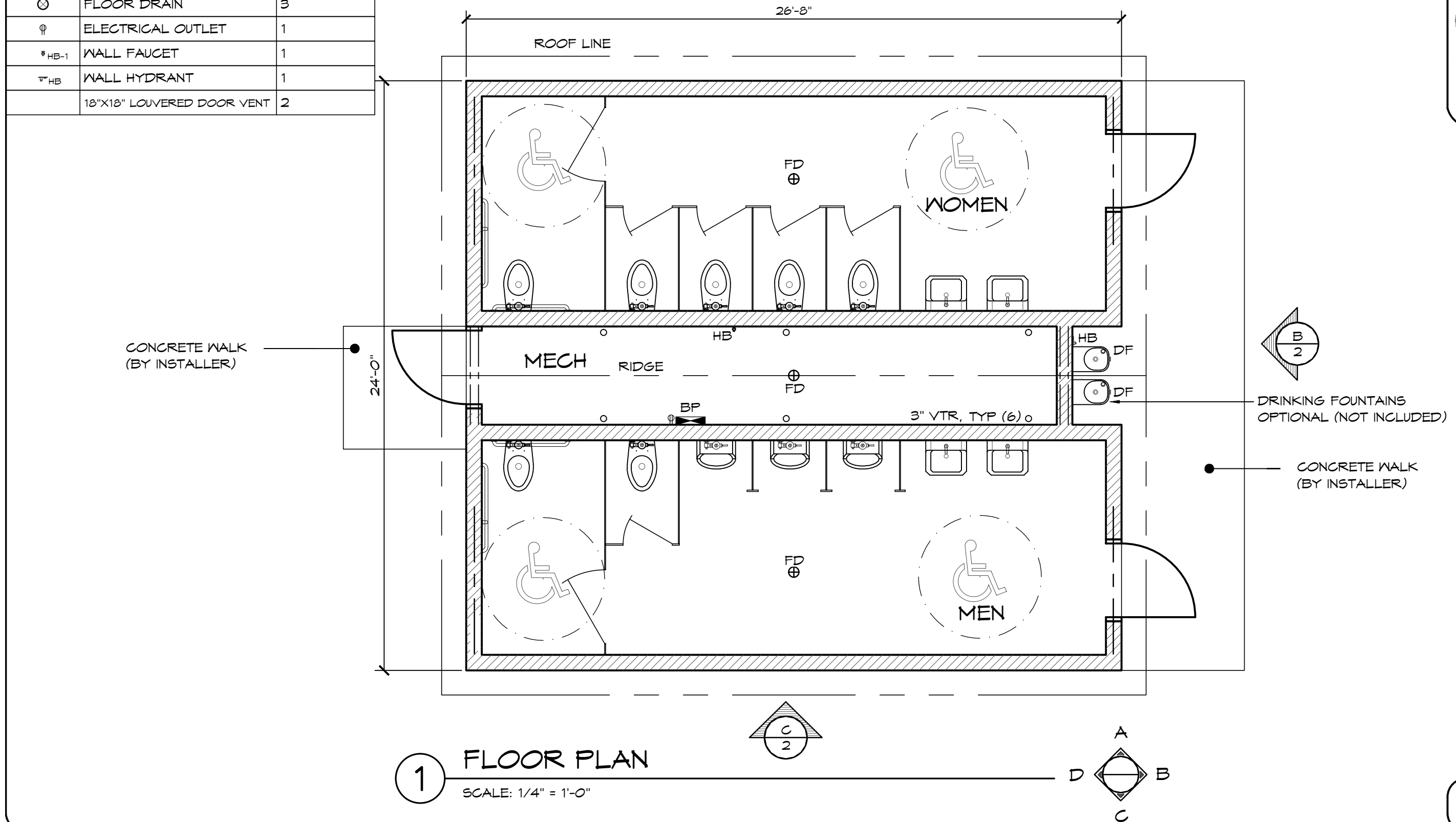


LEGEND		
SYMBOL	DESCRIPTION	AREA/ QUANTITY
---	GABLE VENT	4
---	RIDGE VENT	2
	EXTERIOR WALL LIGHTS	4
	INTERIOR WALL LIGHTS	4
	INTERIOR CEILING LIGHTS	1
⊗	FLOOR DRAIN	3
⊕	ELECTRICAL OUTLET	1
⊕ _{HB-1}	WALL FAUCET	1
⊕ _{HB}	WALL HYDRANT	1
	18"X18" LOUVERED DOOR VENT	2

THESE PLAN VIEW AND ELEVATION DRAWINGS ARE A PRELIMINARY ARCHITECTURAL REPRESENTATION OF THE BUILDING. ALL DIMENSIONS, FEATURES AND COMPONENTS SHOWN ON THESE PRELIMINARY DRAWINGS MAY OR MAY NOT BE PART OF THE QUOTE. PLEASE REFER TO THE "SCOPE OF SUPPLY AND SERVICES" LETTER PROVIDED WITH YOUR QUOTE FOR ROMTEC'S PROPOSED SCOPE OF SUPPLY.

WALL TYPE SCHEDULE

 8" REINFORCED CONCRETE MASONRY BLOCK WALL WITH MORTAR JOINTS, GROUTED SOLID ALL CELLS RUNNING BOND PATTERN.

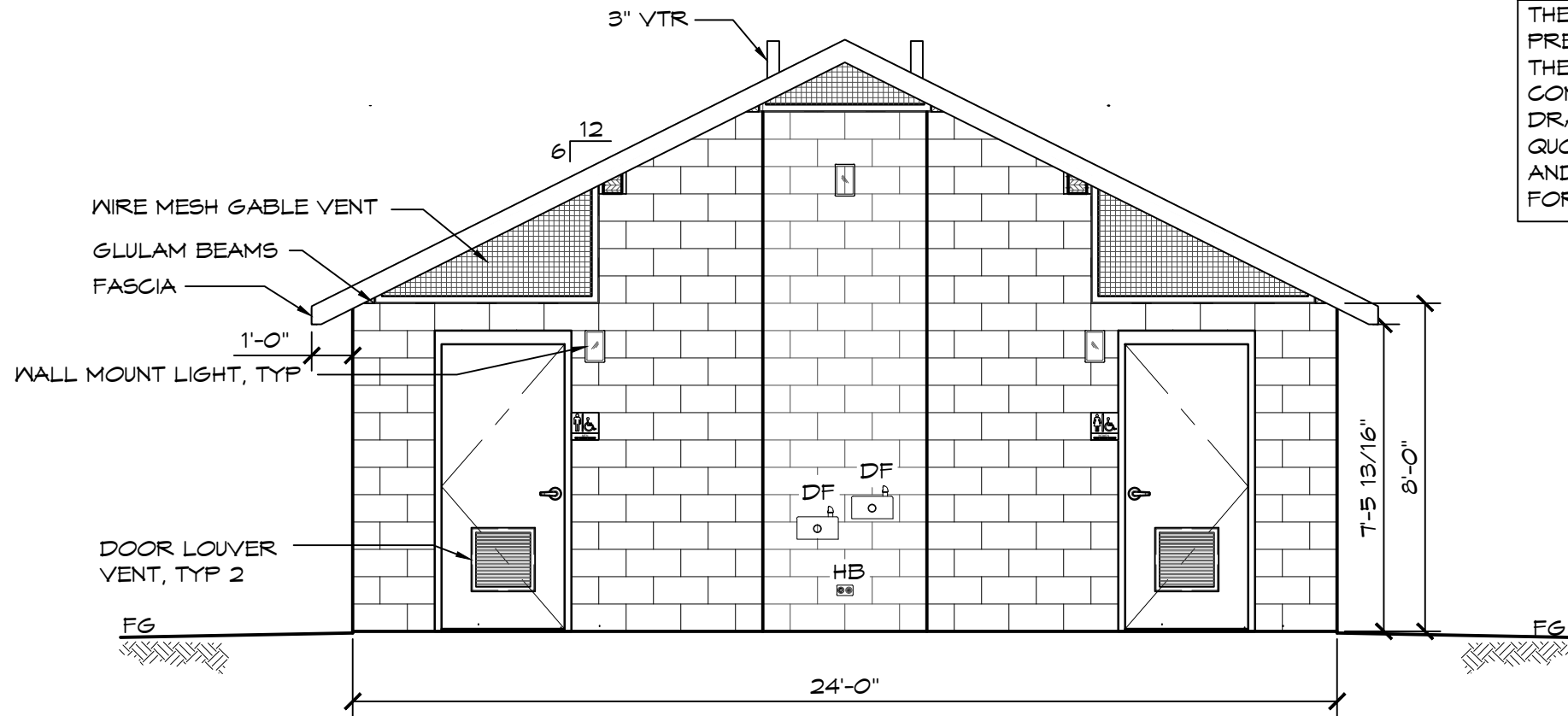


1 FLOOR PLAN
SCALE: 1/4" = 1'-0"

© 2015 ROMTEC, INC. ALL RIGHTS RESERVED. THESE PLANS AND DRAWINGS MAY NOT BE REPRODUCED, ADAPTED OR FURTHER DISTRIBUTED, AND NO BUILDINGS MAY BE CONSTRUCTED FROM THESE PLANS, WITHOUT THE WRITTEN PERMISSION OF ROMTEC, INC.

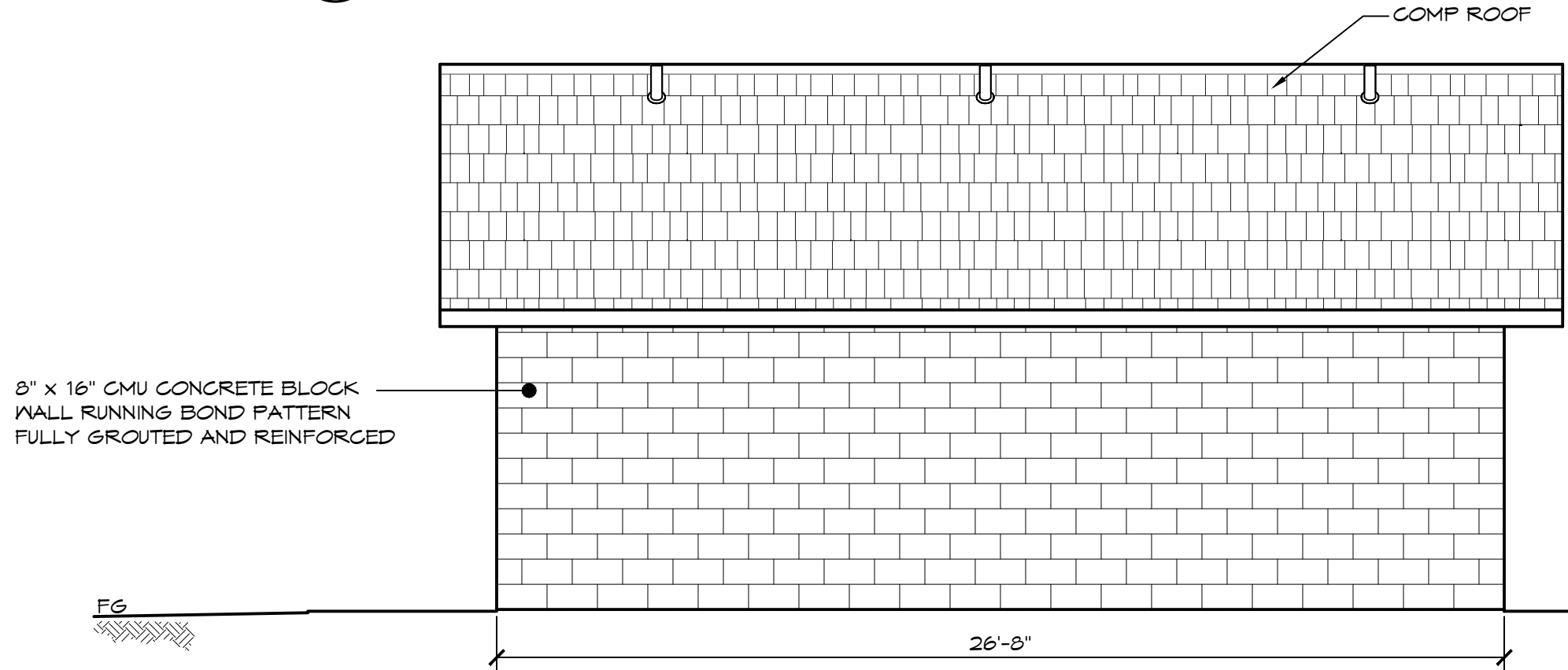
PROJECT: 2019 SIERRA V MULTI-USER RESTROOM - VALUE		
CUSTOMER	PROJECT	LOCATION
PROJECT#:	MODEL#:	DATE:
	2019	00/00/15
REVISIONS	REV.	DATE: BY
DRAWN BY:	TH	

ROMTEC
18240 NORTH BANK ROAD - ROSEBURG, OR 97470
(541) 496-3541 FAX (541) 496-0803
PRELIMINARY



B ELEVATION VIEW
SCALE: 1/4" = 1'-0"

THESE PLAN VIEW AND ELEVATION DRAWINGS ARE A PRELIMINARY ARCHITECTURAL REPRESENTATION OF THE BUILDING. ALL DIMENSIONS, FEATURES AND COMPONENTS SHOWN ON THESE PRELIMINARY DRAWINGS MAY OR MAY NOT BE PART OF THE QUOTE. PLEASE REFER TO THE "SCOPE OF SUPPLY AND SERVICES" LETTER PROVIDED WITH YOUR QUOTE FOR ROMTEC'S PROPOSED SCOPE OF SUPPLY.



C ELEVATION VIEW
SCALE: 1/4" = 1'-0"

© 2015 ROMTEC, INC. ALL RIGHTS RESERVED. THESE PLANS AND DRAWINGS MAY NOT BE REPRODUCED, ADAPTED OR FURTHER DISTRIBUTED, AND NO BUILDINGS MAY BE CONSTRUCTED FROM THESE PLANS, WITHOUT THE WRITTEN PERMISSION OF ROMTEC, INC.

PROJECT: 2079 SIERRA V MULTI-USER RESTROOM - VALUE

CUSTOMER
PROJECT
LOCATION

SHEET TITLE: ELEVATIONS

PROJECT#:	
MODEL#:	2079
DATE:	00/00/15
REVISIONS	
REV.	DATE: BY
DRAWN BY:	TH

SHEET NO.



18240 NORTH BANK ROAD - ROSEBURG, OR 97470
(541) 496-3541 FAX (541) 496-0803

PRELIMINARY