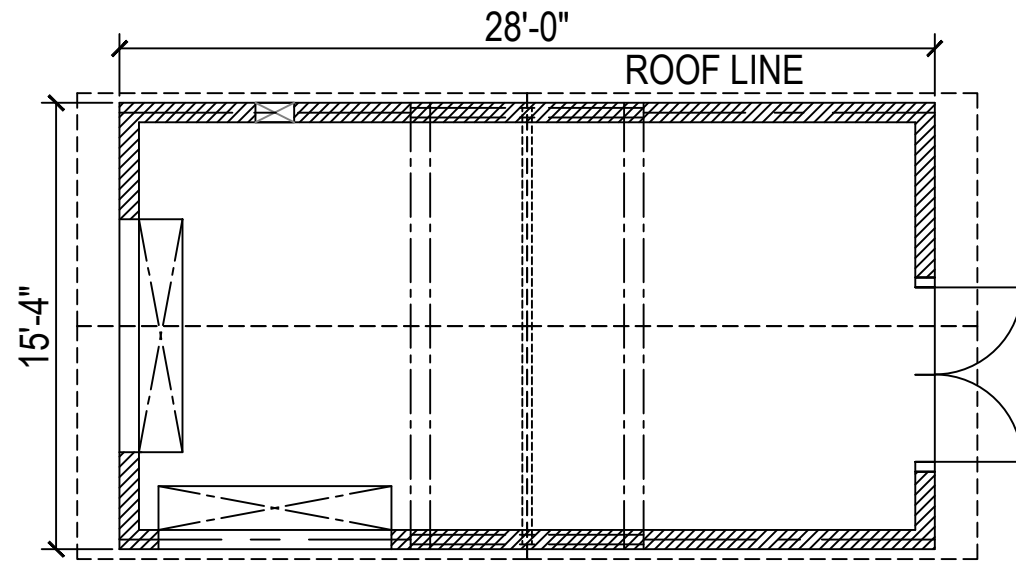


CITY OF CARMEL MAINTENANCE SHOT 15413 - (15'-4" x 28'-0")

NOT TO SCALE - NOT FOR CONSTRUCTION

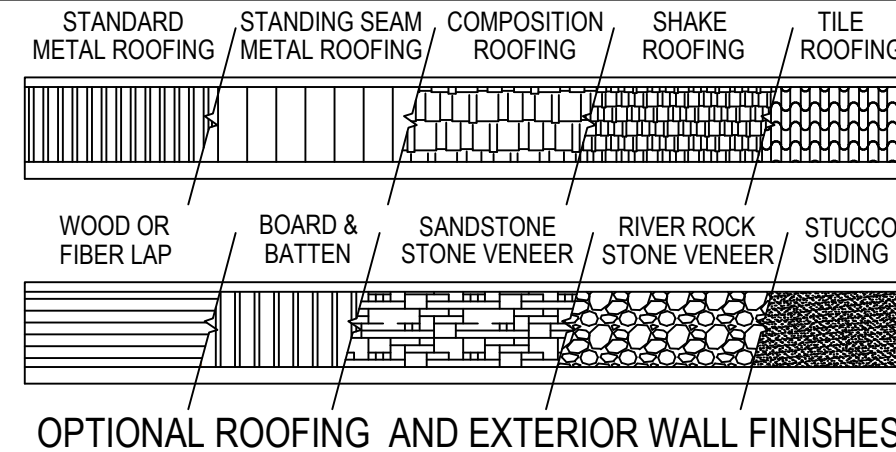


FLOOR PLAN

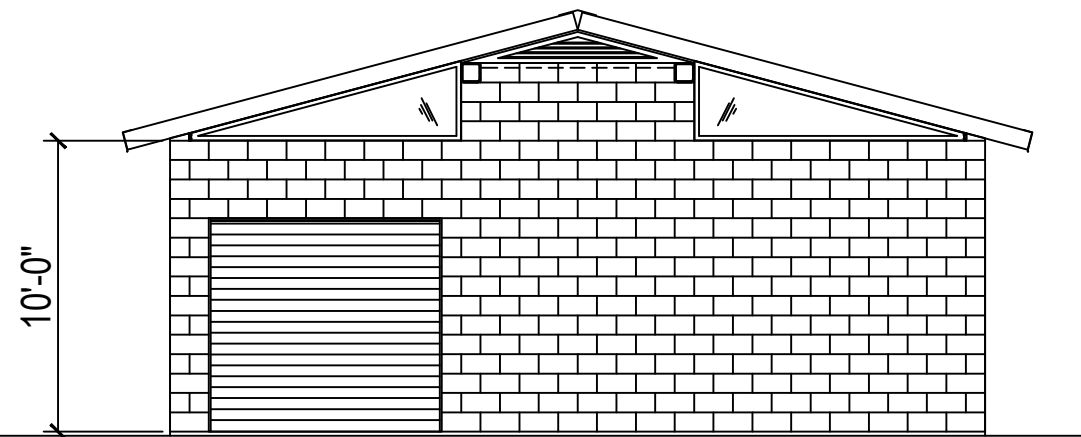
PARTIAL LIST OF MATERIALS IN THIS ROMTEC CUSTOM BUILDING:

WALLS: 8" DRY-STACK CMU, (concrete filled & steel reinforced), BROWN OR GRAY COLOR, SPLIT-FACE EXTERIOR FINISH.
STRUCTURAL STEEL: BEAMS: 8" x 8" x 1/2" SQUARE BEAM & I-BEAM FOR HOIST, PREFAB. PLATES & FASTENERS, POWDERCOATED BLACK.
PREFAB ROOF PANELS: 6" STEEL FRAME, 16" O.C., 3/4" CDX PLY. EXT. SHEATHING, R-11 INSULATION, WHITE FRP CEILING ON 1/2" OSB.
ROOFING: 30-YEAR COMPOSITION SHINGLES OVER 30# ROOFING FELT, MOCHA (dark brown) TRIM COLOR.
INTERIOR FINISH: WHITE FRP ON WALLS & VAULTED CEILING.
DOUBLE DOORS & FRAME: 3'-0" x 7'-0" GALV. STEEL DOOR, HONEYCOMB CORE, 2" FRAME, POWDERCOATED BLACK, COMMERCIAL HARDWARE.
ROLL-UP CURTAIN DOORS: 8'-0" x 7'-0", 22-GA. GALV. STEEL, FLAT SLAT PROFILE, MAN. OP. CHAIN HOIST, GALV. HOOD., DEADBOLT, WEATHERSEAL.
GABLE WINDOWS: TRANSLUCENT 1/4" LEXAN ACRYLIC IN STEEL FRAME, POWDERCOATED BLACK.
WALL VENTS: EXPANDED STEEL MESH OVER GALV. LOUVERS W/ INSECT SCREEN IN STEEL FRAME, POWDERCOATED BLACK.
ELECTRICAL: INTERIOR & EXTERIOR LIGHTS, PHOTOEYE, OUTLETS & SWITCHES, MAIN BREAKER PANEL (installer supplied).

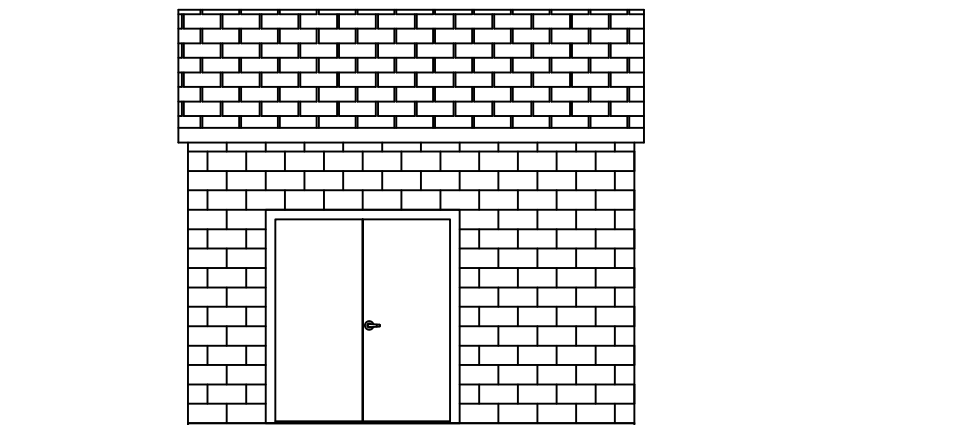
IMPORTANT: REFER TO QUOTE AND SPEC. FOR THE ITEMS INCLUDED WITH YOUR BUILDING PACKAGE.



OPTIONAL ROOFING AND EXTERIOR WALL FINISHES



FRONT VIEW



SIDE VIEW

ROMTEC

18240 NORTH BANK ROAD - ROSEBURG, OR 97470
(541)-496-3541 service@romtec.com
www.romtec.com

PROJECT
15413

DATE
MM/DD/YY

REVISIONS

DATE	BY

DRAWN BY:
BE

**SAMPLE
DRAWING**