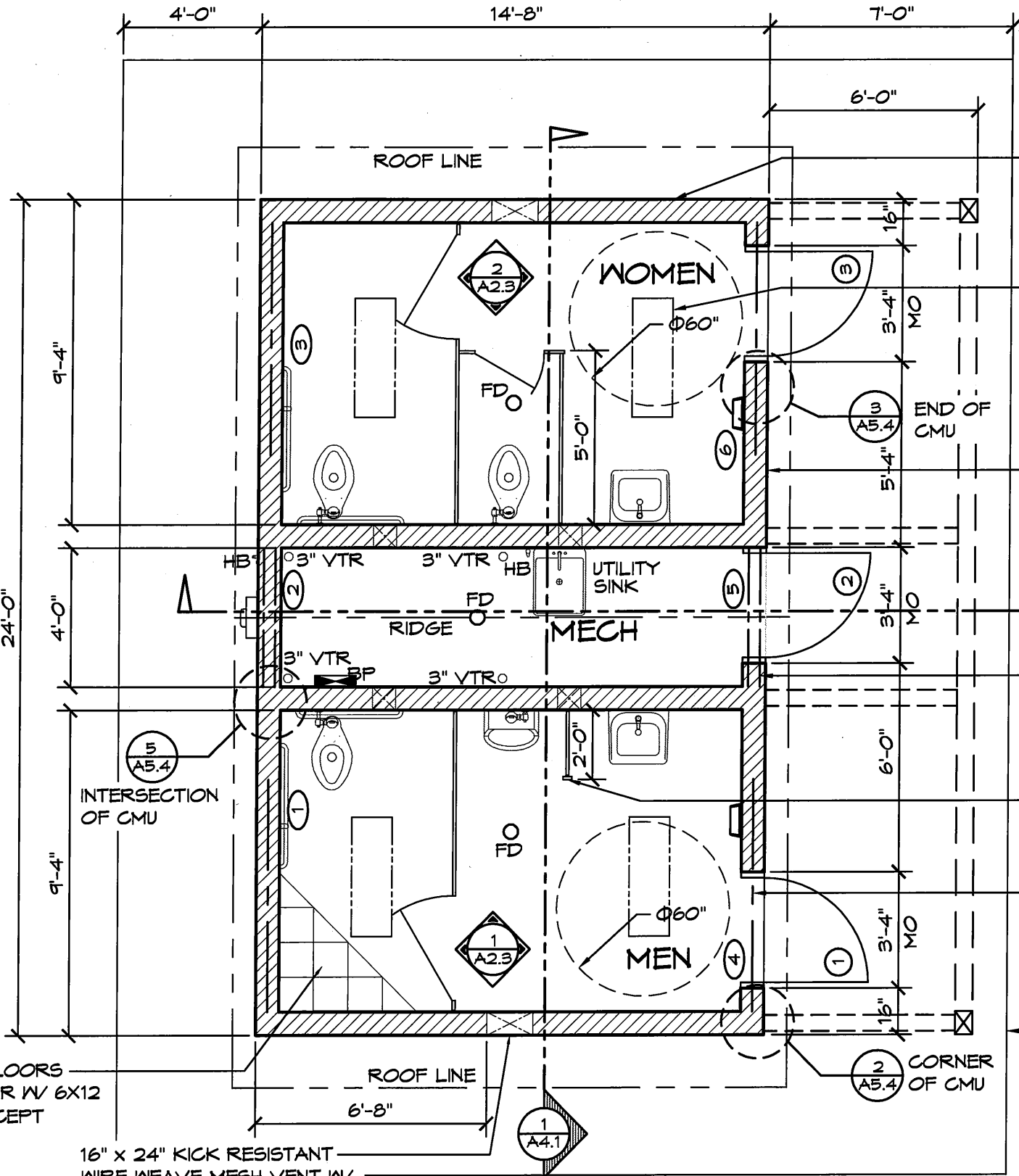


WALL TYPE SCHEDULE

 8" DRY STACK CMU WALL REINFORCED & GROUT FILLED



APPLY TWO COATS OF ANTI-GRAFFITI COATING ON ALL EXTERIOR WALLS PER MANUFACTURERS INSTRUCTIONS

FIXED SKYLIGHT, TYP (4) SEE DETAIL SHEET A8.5

UNDER SIDING 8" x 16" SMOOTH INTERLOCKING RUNNING BOND PATTERN DRY STACK REINFORCED GROUT FILLED CMU CONCRETE BLOCK WALL

WIRE WEAVE MESH RIDGE VENT, TYP (2)

HDPE RESTROOM PARTITION

POLYCARBONATE WINDOWS, TYP (4) SEE DETAIL SHEET A6.4

6' CONC WALK, BY CONTRACTOR

ALL INTERIOR FLOORS 12X12 TILE FLOOR W/ 6X12 COVE BASE (EXCEPT MECH ROOM)

16" x 24" KICK RESISTANT WIRE WEAVE MESH VENT W/ INSECT SCREEN, TYP. (2) ROMTEC XV-000-1003

NOTE: FIXTURES AND ACCESSORIES ARE DIMENSIONED ON SHT A2.2

1 FLOOR PLAN
SCALE: 1/4" = 1'-0"



© 2011 ROMTEC, INC. ALL RIGHTS RESERVED. THESE PLANS AND DRAWINGS MAY NOT BE REPRODUCED, ADAPTED OR FURTHER DISTRIBUTED, AND NO BUILDINGS MAY BE CONSTRUCTED FROM THESE PLANS, WITHOUT THE WRITTEN PERMISSION OF ROMTEC, INC.

PROJECT: 2081 SIERRA IV MULTI-USER RESTROOM
DAM SITE OVERLOOK RESTROOM
EUREKA SPRINGS, ARKANSAS

PLAN SET# 18182
DATE: 09/02/2011

REV.	DATE	BY

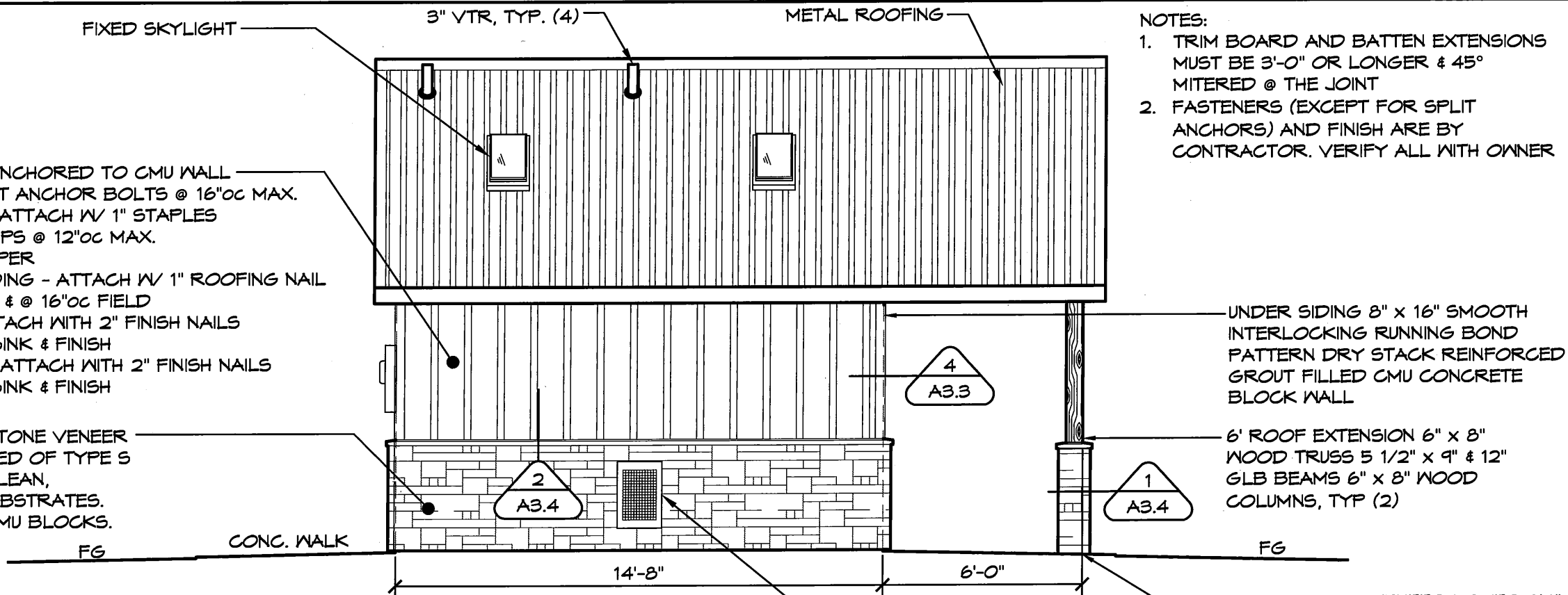
DRAWN BY: CR

SHEET NO. A2.1

ROMTEC
18240 NORTH BANK ROAD
ROSEBURG, OR 97470
(541) 486-3541 FAX (541) 486-0803

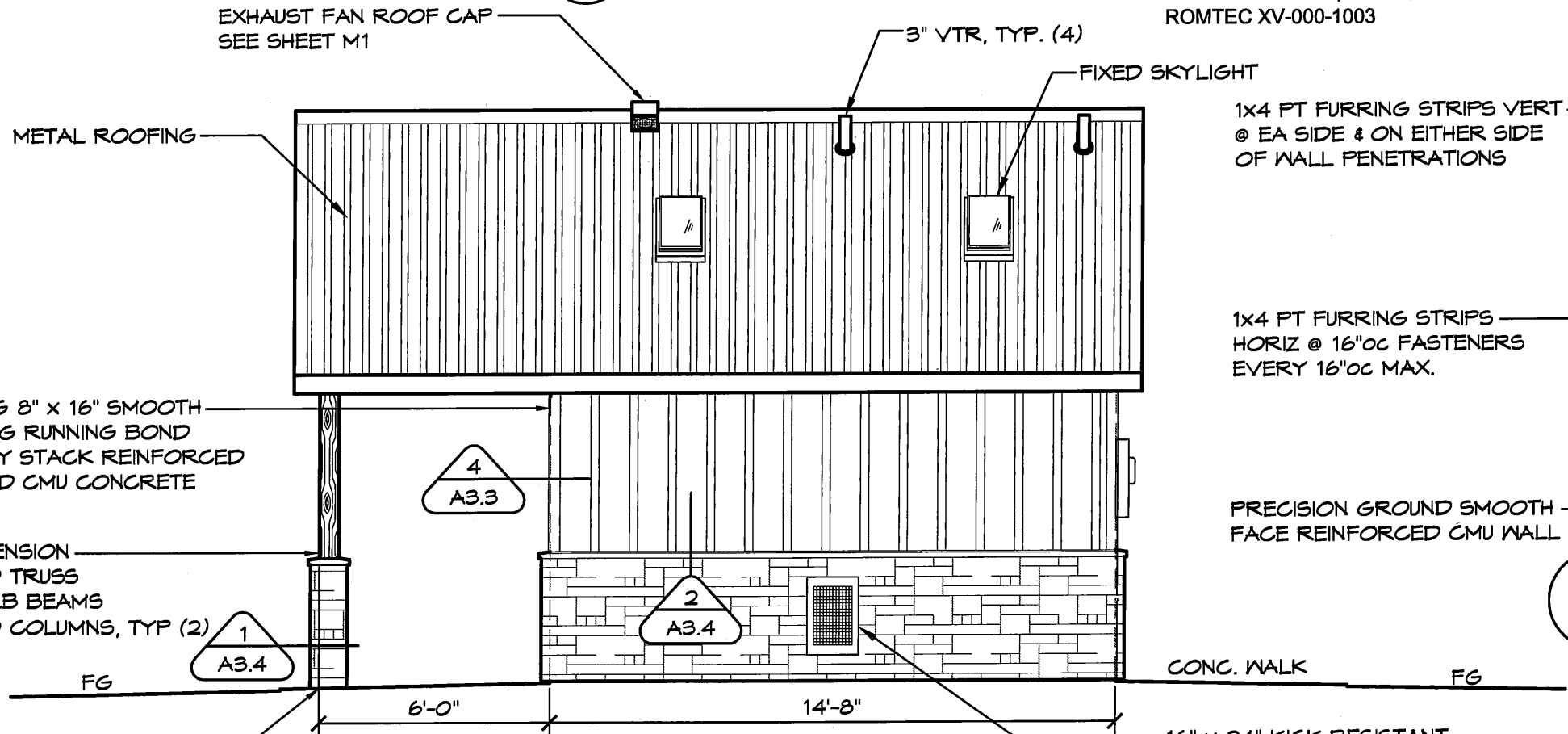
1x4 FURRING STRIPS - ANCHORED TO CMU WALL WITH 1/4" x 3" SPLIT ANCHOR BOLTS @ 16"oc MAX.
 7/16" OSB SHEATHING - ATTACH W/ 1" STAPLES INTO FURRING STRIPS @ 12"oc MAX. COVER W/ 30# PAPER
 5/16" HARDIE PANEL SIDING - ATTACH W/ 1" ROOFING NAIL @ 8"oc PERIMETER & @ 16"oc FIELD
 1x3.5 HARDIE TRIM - ATTACH WITH 2" FINISH NAILS @ 12"oc, COUNTERSINK & FINISH
 3/4x2.5 HARDI BATTS - ATTACH WITH 2" FINISH NAILS @ 12"oc, COUNTERSINK & FINISH

3'-4" OWENS CORNING STONE VENEER OVER 1/2"-3/4" THICK BED OF TYPE S GRAY MORTAR OVER CLEAN, UNPAINTED MASONRY SUBSTRATES. ATTACH DIRECTLY TO CMU BLOCKS.

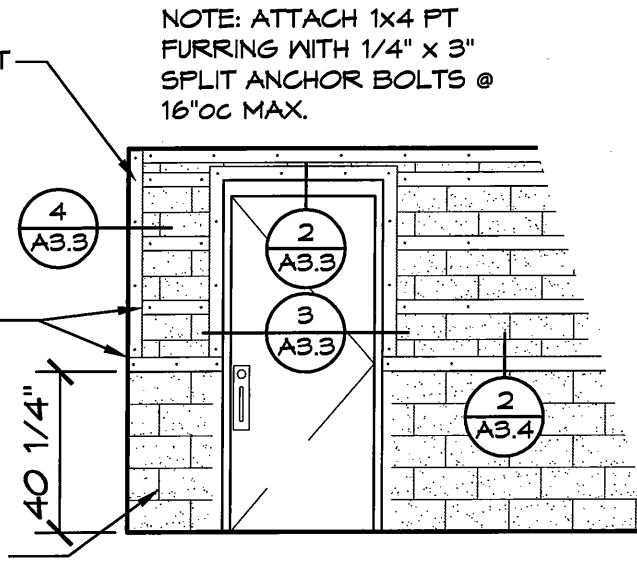


NOTES:
 1. TRIM BOARD AND BATTEN EXTENSIONS MUST BE 3'-0" OR LONGER & 45° MITERED @ THE JOINT
 2. FASTENERS (EXCEPT FOR SPLIT ANCHORS) AND FINISH ARE BY CONTRACTOR. VERIFY ALL WITH OWNER

1 SOUTH ELEVATION
 SCALE: 1/4" = 1'-0"



2 NORTH ELEVATION
 SCALE: 1/4" = 1'-0"



3 WALL DETAIL
 SCALE: 3/16" = 1'-0"

© 2011 ROMTEC, INC. ALL RIGHTS RESERVED. THESE PLANS AND DRAWINGS MAY NOT BE REPRODUCED, ADAPTED OR FURTHER DISTRIBUTED, AND NO BUILDINGS MAY BE CONSTRUCTED FROM THESE PLANS, WITHOUT THE WRITTEN PERMISSION OF ROMTEC, INC.

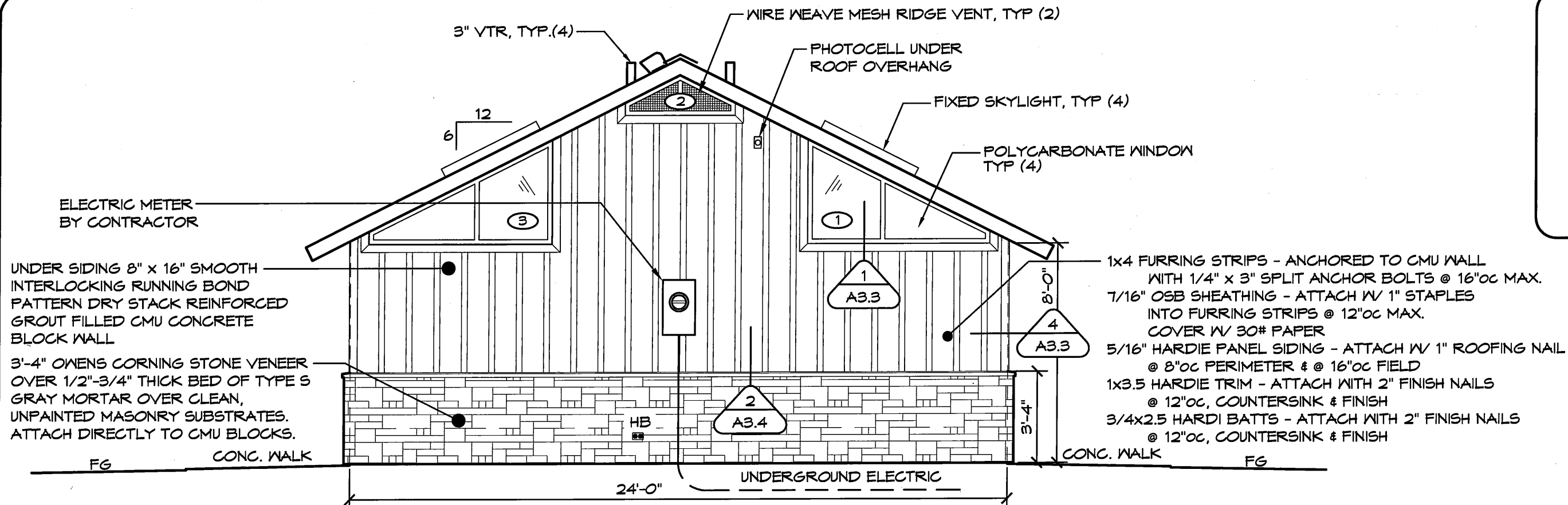
PROJECT: 2081 SIERRA IV MULTI-USER RESTROOM
 DAM SITE OVERLOOK RESTROOM
 EUREKA SPRINGS, ARKANSAS

SHEET TITLE: EXTERIOR ELEVATIONS

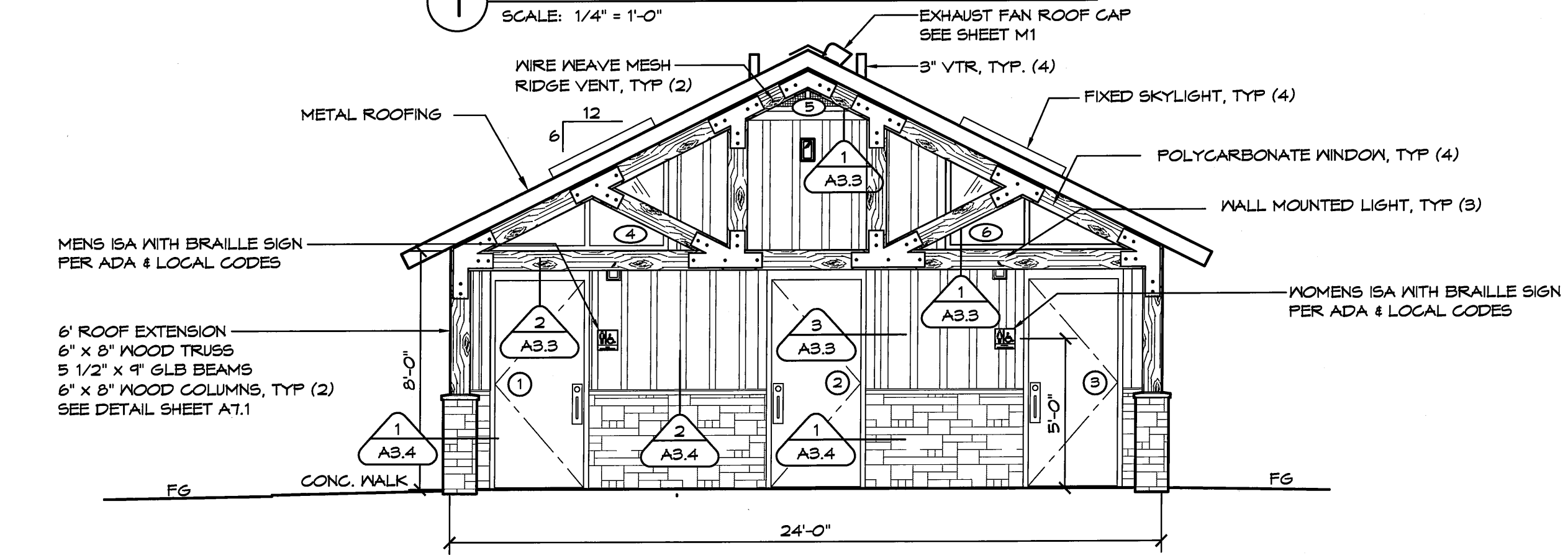
PLAN SET#	18182
DATE:	09/02/2011
REVISIONS	
REV.	DATE:
BY	
DRAWN BY:	CR

ROMTEC
 18240 NORTH BANK ROAD
 ROSELBURG, OR 97470
 (541) 486-3541 FAX (541) 486-0803

SHEET NO. **A3.1**



1 WEST ELEVATION
SCALE: 1/4" = 1'-0"



2 EAST ELEVATION
SCALE: 1/4" = 1'-0"

© 2011 ROMTEC, INC. ALL RIGHTS RESERVED. THESE PLANS AND DRAWINGS MAY NOT BE REPRODUCED, ADAPTED OR FURTHER DISTRIBUTED, AND NO BUILDINGS MAY BE CONSTRUCTED FROM THESE PLANS, WITHOUT THE WRITTEN PERMISSION OF ROMTEC, INC.
 PROJECT: 2081 SIERRA IV MULTI-USER RESTROOM
 PLAN SET# 18182
 DATE: 09/02/2011
 REVISIONS
 REV. DATE BY
 DRAWN BY: CR

18240 NORTH BANK ROAD
 ROSEBURG, OR 97470
 (541) 486-3541 FAX (541) 486-0803
ROMTEC

SHEET TITLE: EXTERIOR ELEVATIONS

SHEET NO. **A3.2**