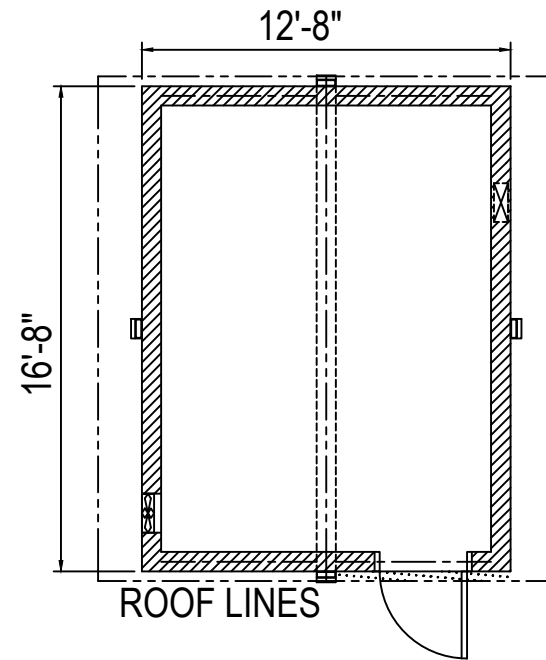


HEBO WASTEWATER TREATMENT PLANT 13017 - (12'-8" x 16'-8")

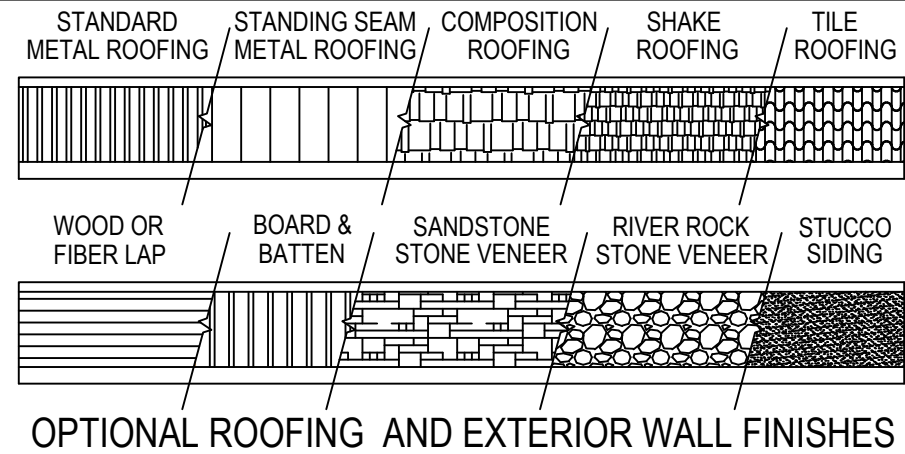
NOT TO SCALE - NOT FOR CONSTRUCTION



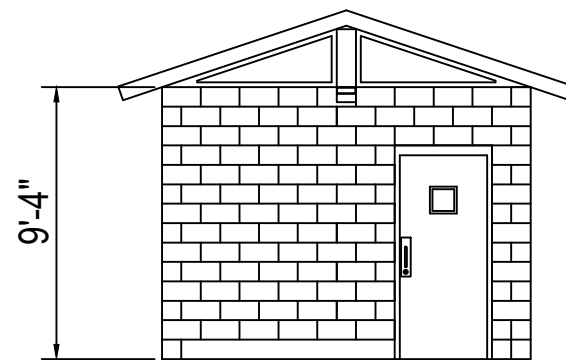
FLOOR PLAN

STANDARD ITEMS IN SIERRA CONCRETE BUILDING PACKAGE:

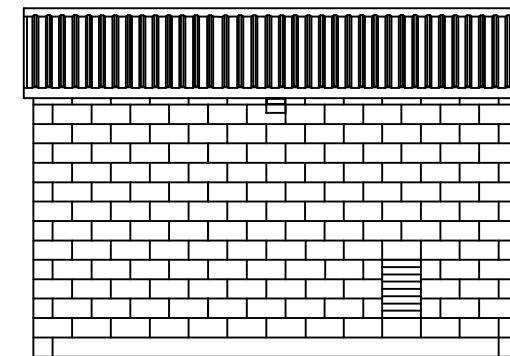
WALLS: 8" DRY-STACK CMU, (concrete filled & steel reinforced). BROWN OR GRAY COLOR, SPLIT OR SMOOTH EXTERIOR FINISH.
PREFAB ROOF PANELS: 6" STEEL FRAME, 16" O.C., 3/4" CDX PLY. EXT. SHEATHING, R-19 INSULATION, WHITE FRP CEILING ON 1/2" OSB.
ROOFING: HI-RIB METAL ROOFING & TRIM OVER ROOFING FELT, MOCHA (dark brown) COLOR, OPTIONAL ROOFING COLORS AVAILABLE.
INTERIOR FINISH: WHITE FRP ON WALLS & VAULTED CEILING, UNFINISHED INTERIOR MECHANICAL ROOM WALLS.
DOORS & FRAMES: 3'-0" x 7'-0" GALV. STEEL DOOR WITH TRANSLUCENT OBSCURE LEXAN WINDOW, HONEYCOMB CORE, 2" FRAME, POWDERCOATED BLACK; COMMERCIAL HARDWARE.
WINDOWS: TRANSLUCENT LEXAN IN STEEL FRAME, POWDERCOATED BLACK.
WALL VENTS: EXPANDED STEEL MESH OVER GALV. LOUVERS W/ INSECT SCREEN IN STEEL FRAME, POWDERCOATED BLACK.
ELECTRICAL: INTERIOR & EXTERIOR LIGHTS, PHOTOEYE, MAIN BREAKER PANEL.
OPTIONS (must be on quote to be supplied):
 SIGNS, PAPER & SOAP DISPENSERS, WASTE RECEPTACLES, DIAPER CHANGING STATIONS, LAV SHIELDS (lavatory pipe insulation boots), COMFORT HEAT, HAND DRYERS, WATER HEATER PKG., DOOR CLOSERS, ELECT. DOOR LOCKS, CONCESSION COUNTER & ROLL-UP WINDOW, ROOF EXTENSION, 3-TAB COMPOSITION OR CEDAR ROOFING, CUSTOM EXTERIORS (wood, stucco, fiber-cement, masonry).
IMPORTANT: REFER TO QUOTE AND SPEC. FOR THE ITEMS INCLUDED WITH YOUR BUILDING PACKAGE.



OPTIONAL ROOFING AND EXTERIOR WALL FINISHES



FRONT VIEW



SIDE VIEW

ROMTEC

18240 NORTH BANK ROAD - ROSEBURG, OR 97470
(541)-496-3541 service@romtec.com
www.romtec.com

PROJECT

13017

DATE

MM/DD/YY

REVISIONS

DATE	BY

DRAWN BY:

BE

SAMPLE DRAWING