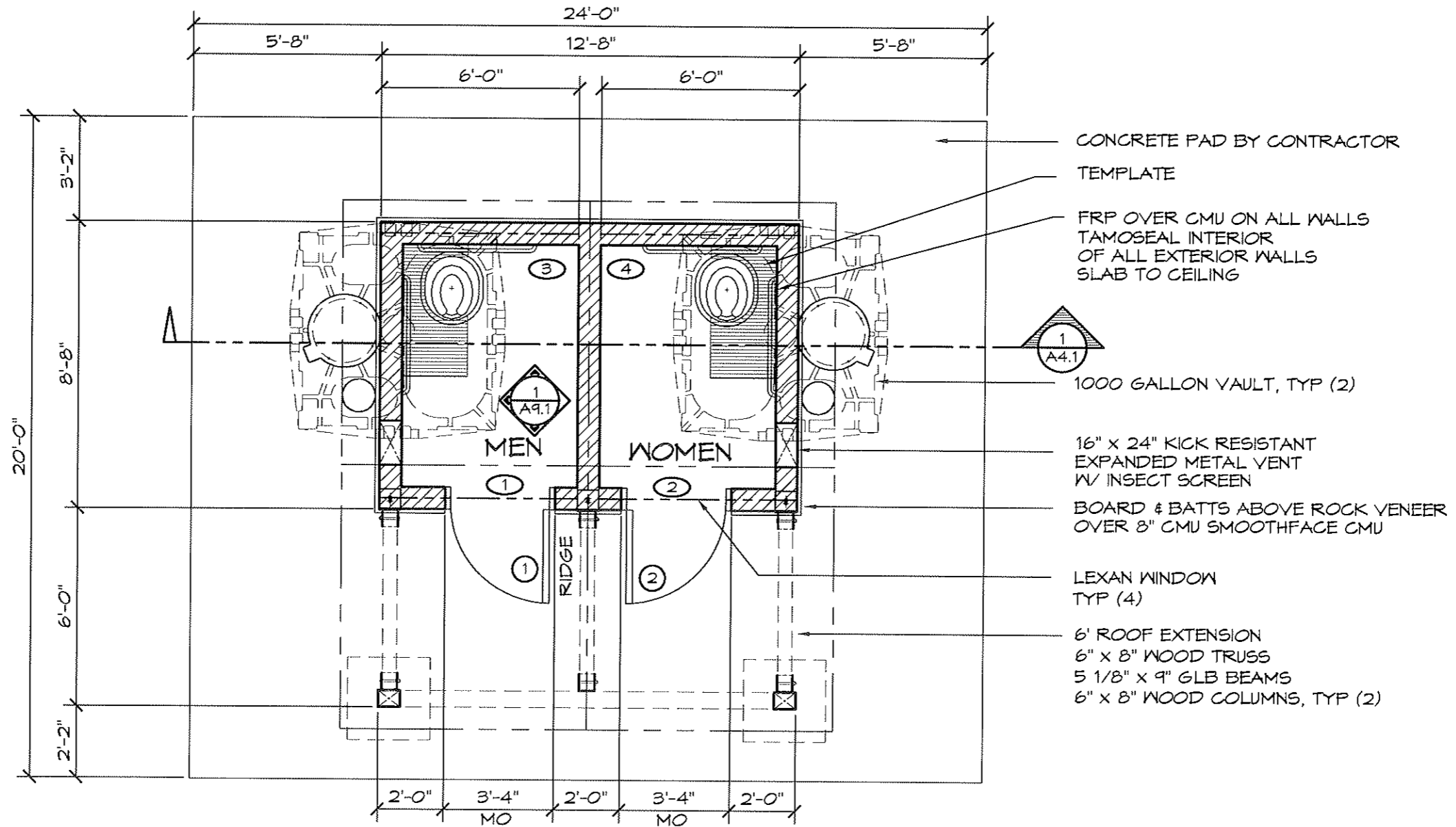


# WALL TYPE SCHEDULE

 8" DRY STACK CMU WALL  
REINFORCED & GROUT FILLED



1

## FLOOR PLAN

SCALE: 1/4" = 1'-0"



PLAN NORTH

NOTE:  
FIXTURES AND ACCESSORIES  
ARE DIMENSIONED ON SHT A9.1

© 2008 ROMTEC, INC. ALL RIGHTS RESERVED. THESE PLANS AND DRAWINGS MAY NOT BE REPRODUCED, ADAPTED OR FURTHER DISTRIBUTED, AND NO BUILDINGS MAY BE CONSTRUCTED FROM THESE PLANS, WITHOUT THE WRITTEN PERMISSION OF ROMTEC, INC.

PROJECT: 1018 - ASPEN PIONEER DOUBLE

SANDY RIVER DELTA  
MT HOOD, OREGON

SHEET TITLE:

FLOOR PLAN

PLAN SET#  
17601

DATE:  
06/13/08  
REVISIONS

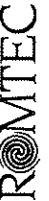
REV	DATE	BY
1	06/20/08	FB

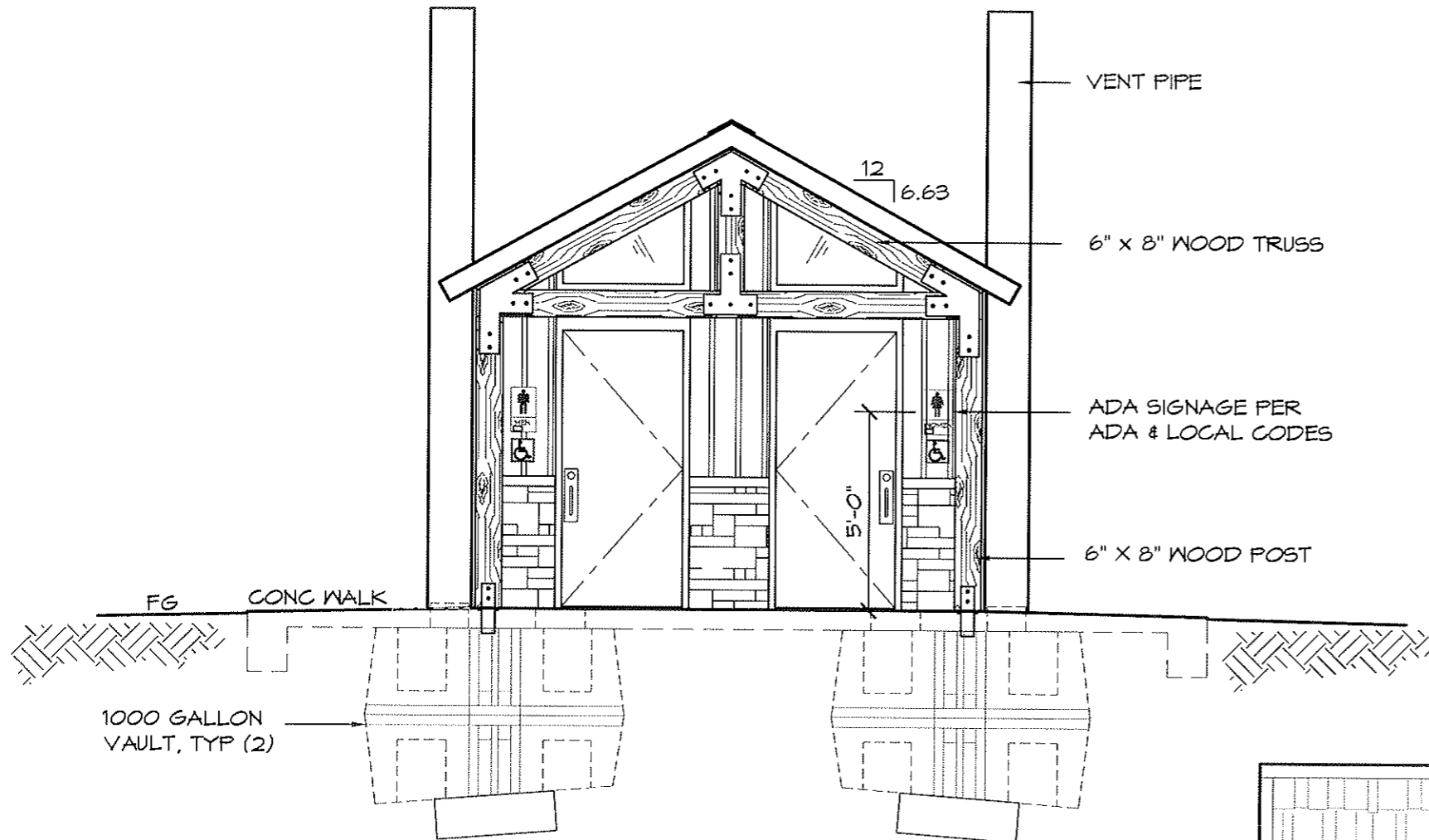
DRAWN BY:  
FB

SHEET NO.

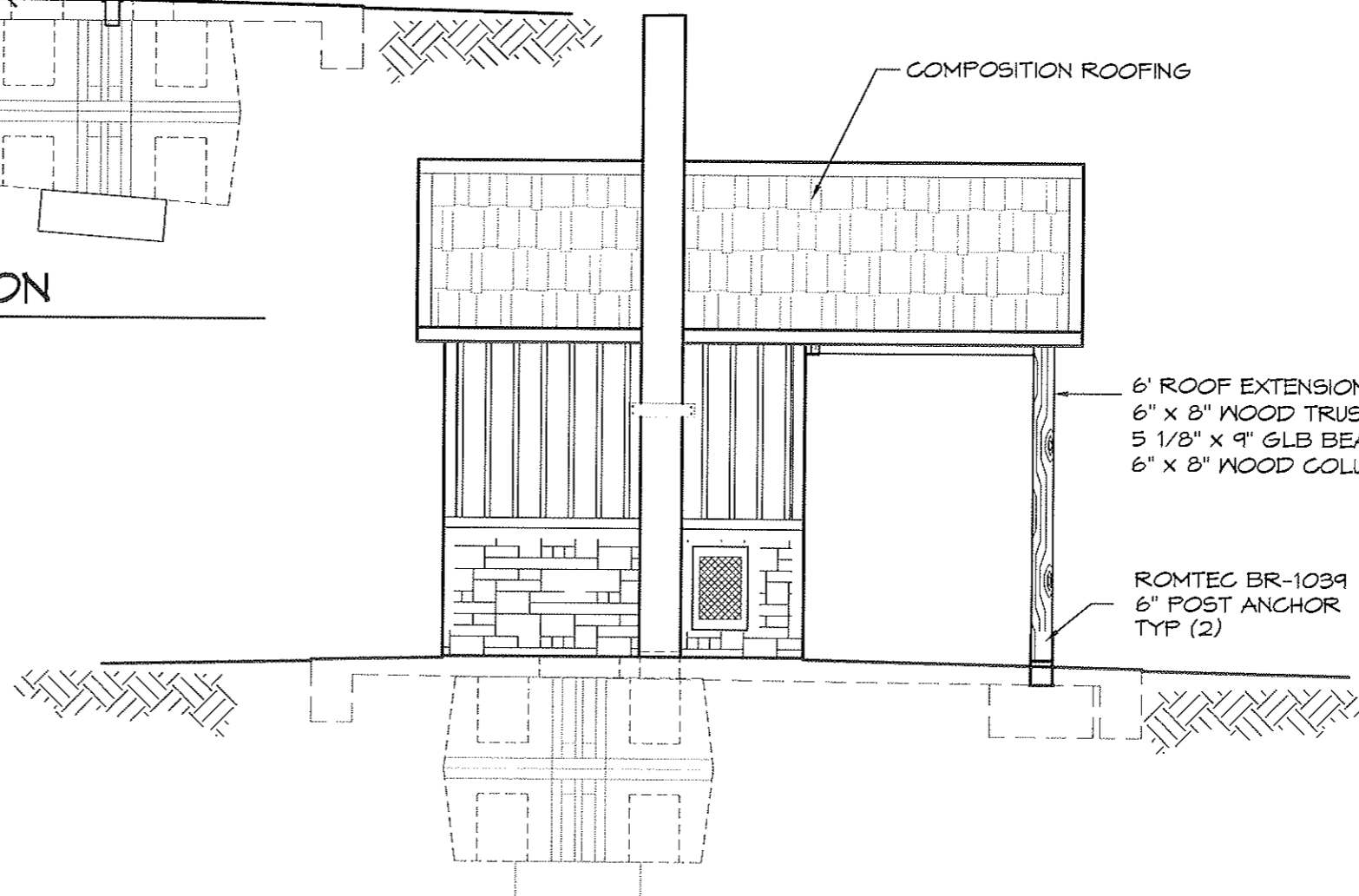
A2.1

18240 NORTH BAWK ROAD, ROSEBURG, OR 97470  
(541) 486-3841 FAX (541) 486-0823





1 SOUTH ELEVATION  
SCALE: 1/4" = 1'-0"



2 WEST ELEVATION  
SCALE: 1/4" = 1'-0"

© 2008 ROMTEC, INC. ALL RIGHTS RESERVED. THESE PLANS AND DRAWINGS MAY NOT BE REPRODUCED, ADAPTED OR FURTHER DISTRIBUTED, AND NO BUILDINGS MAY BE CONSTRUCTED FROM THESE PLANS, WITHOUT THE WRITTEN PERMISSION OF ROMTEC, INC.

PROJECT: 1018 - ASPEN PIONEER DOUBLE	
SANDY RIVER DELTA MT HOOD, OREGON	
SHEET TITLE: EXTERIOR ELEVATIONS	
PLAN SET#	17601
DATE:	06/13/08
REVISIONS	
REV.	DATE
1	06/20/08
BY	FB
DRAWN BY: FB	

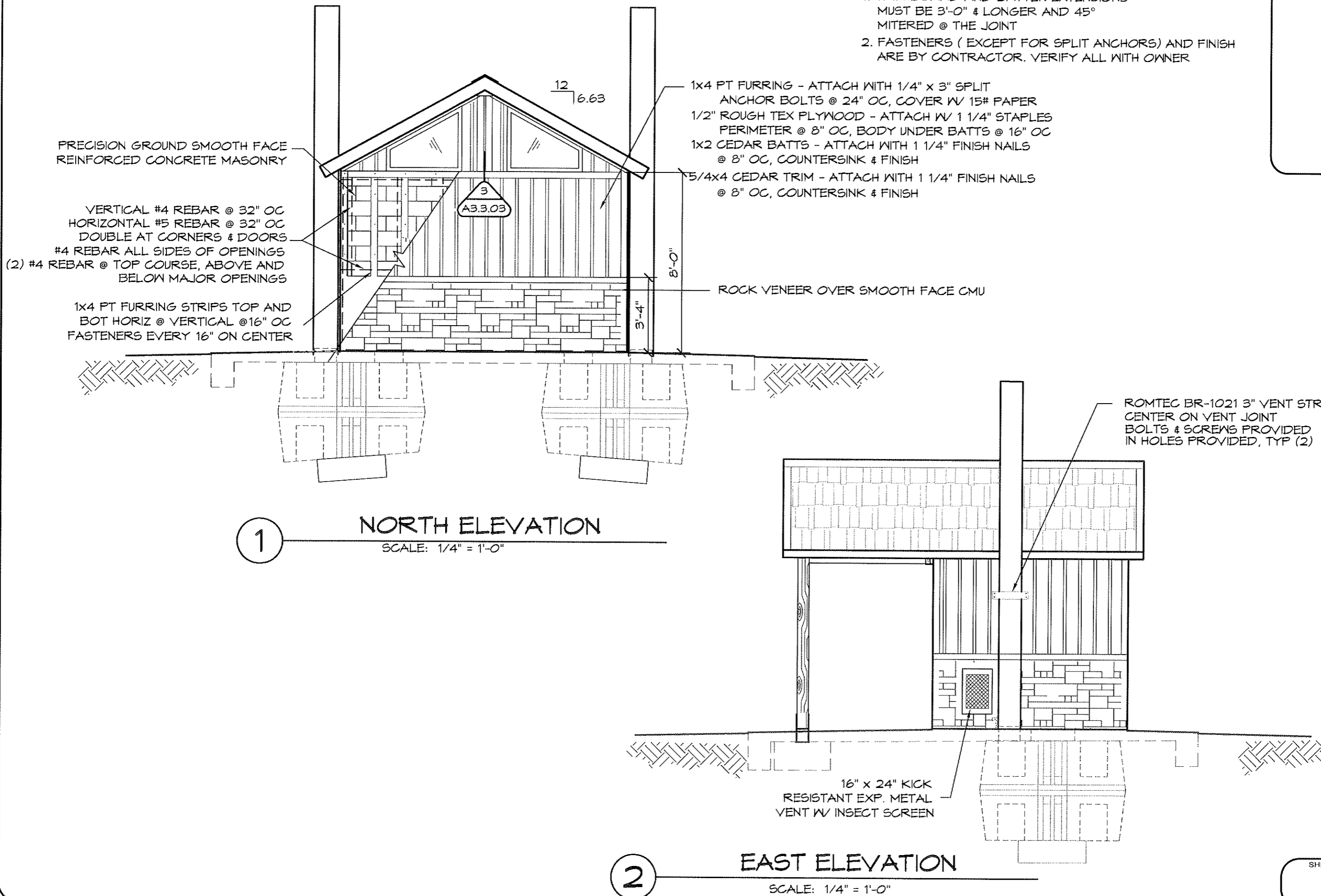
18240 NORTH BANK ROAD - ROSELBURG, OR 97470  
 (541) 496-3541 FAX (541) 496-6983  
**ROMTEC**

SHEET NO.

**A3.1**

NOTES:

1. TRIM BOARD AND BATTEN EXTENSIONS MUST BE 3'-0" & LONGER AND 45° MITERED @ THE JOINT
2. FASTENERS ( EXCEPT FOR SPLIT ANCHORS) AND FINISH ARE BY CONTRACTOR. VERIFY ALL WITH OWNER



PRECISION GROUND SMOOTH FACE REINFORCED CONCRETE MASONRY

VERTICAL #4 REBAR @ 32" OC  
HORIZONTAL #5 REBAR @ 32" OC  
DOUBLE AT CORNERS & DOORS  
#4 REBAR ALL SIDES OF OPENINGS  
(2) #4 REBAR @ TOP COURSE, ABOVE AND BELOW MAJOR OPENINGS

1X4 PT FURRING STRIPS TOP AND BOT HORIZ @ VERTICAL @ 16" OC FASTENERS EVERY 16" ON CENTER

1X4 PT FURRING - ATTACH WITH 1/4" x 3" SPLIT ANCHOR BOLTS @ 24" OC, COVER W/ 15# PAPER  
1/2" ROUGH TEX PLYWOOD - ATTACH W/ 1 1/4" STAPLES PERIMETER @ 8" OC, BODY UNDER BATTS @ 16" OC  
1X2 CEDAR BATTS - ATTACH WITH 1 1/4" FINISH NAILS @ 8" OC, COUNTERSINK & FINISH  
5/4X4 CEDAR TRIM - ATTACH WITH 1 1/4" FINISH NAILS @ 8" OC, COUNTERSINK & FINISH

ROCK VENEER OVER SMOOTH FACE CMU

ROMTEC BR-1021 3" VENT STRAP CENTER ON VENT JOINT BOLTS & SCREWS PROVIDED IN HOLES PROVIDED, TYP (2)

16" x 24" KICK RESISTANT EXP. METAL VENT W/ INSECT SCREEN

1 NORTH ELEVATION  
SCALE: 1/4" = 1'-0"

2 EAST ELEVATION  
SCALE: 1/4" = 1'-0"

© 2008 ROMTEC, INC. ALL RIGHTS RESERVED. THESE PLANS AND DRAWINGS MAY NOT BE REPRODUCED, ADAPTED OR FURTHER DISTRIBUTED, AND NO BUILDINGS MAY BE CONSTRUCTED FROM THESE PLANS, WITHOUT THE WRITTEN PERMISSION OF ROMTEC, INC.

PROJECT: 1018 - ASPEN PIONEER DOUBLE  
SANDY RIVER DELTA  
MT HOOD, OREGON  
SHEET TITLE: EXTERIOR ELEVATIONS

PLAN SET#	17601	
DATE:	06/13/08	
REVISIONS		
REV.	DATE:	BY
1	06/20/08	FB
DRAWN BY: FB		

18210 NORTH BANK ROAD, ROSSBURG, OR 97170  
(503) 486-3841 FAX (503) 486-0033  
**ROMTEC**

SHEET NO. **A3.2**