

## Interior Finish - Unity Tile Option

The following is an example of the Romtec interior Floor finish - tile Option 3.

### Specifications

- 12" x 24" Daltile Unity Unpolished Field Tile
- 3" x 12" Daltile Unity Bullnose tile
- 6" x 12" Daltile Unity Cove Base
  - *Creates a more uniform visual for contemporary minimalist look.*
  - *Offers the high performance of double-load ColorBody™ porcelain.*
- GROUT: Mapei® Kerapoxy® is a premium-grade, water-cleanable, 100%-solids, high-strength epoxy mortar and chemical-resistant nonsagging grout.

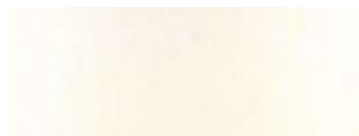
### Color Scheme 1

Daltile Unity:

Avorio P400



01 – Alabaster

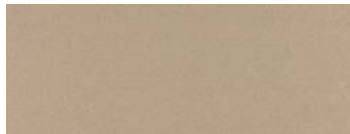


Unpolished Avorio

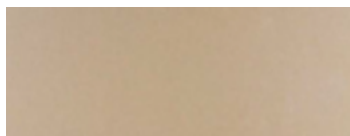
### Color Scheme 2

Daltile Unity:

Tobacco P403



105 – Driftwood



Unpolished Tobacco

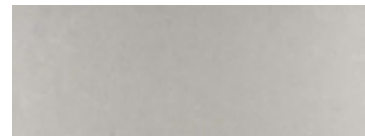
### Color Scheme 3

Daltile Unity:

Ashgrey P405



02- Pewter



Unpolished Ashgrey