
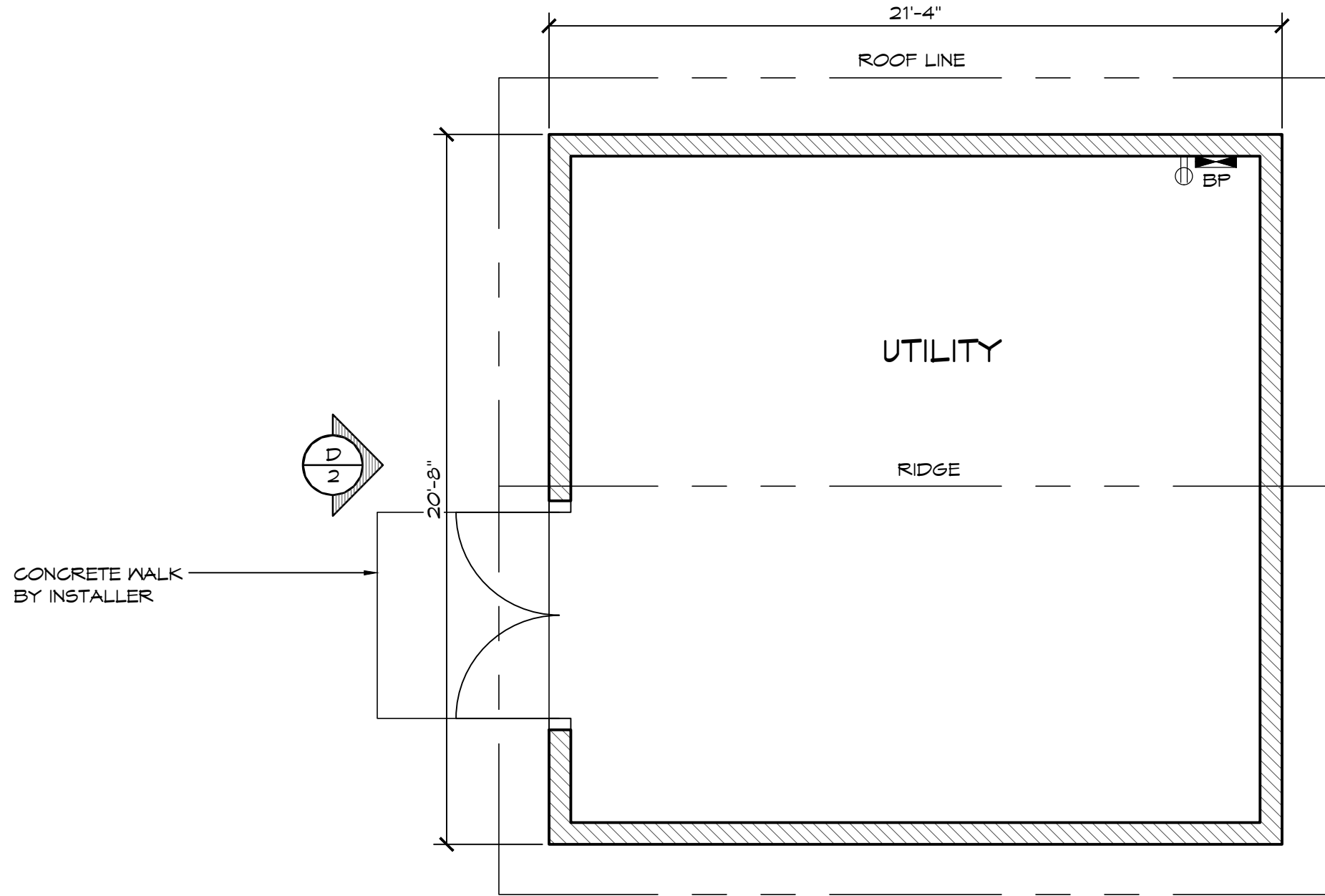


LEGEND		
SYMBOL	DESCRIPTION	AREA/ QUANTITY
	INT FLOURESCENT LIGHTS	4
	EXTERIOR WALL LIGHTS	2
⊕	ELECTRICAL OUTLET	1

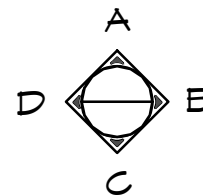
THESE PLAN VIEW AND ELEVATION DRAWINGS ARE A PRELIMINARY ARCHITECTURAL REPRESENTATION OF THE BUILDING. ALL DIMENSIONS, FEATURES AND COMPONENTS SHOWN ON THESE PRELIMINARY DRAWINGS MAY OR MAY NOT BE PART OF THE QUOTE. PLEASE REFER TO THE "SCOPE OF SUPPLY AND SERVICES" LETTER PROVIDED WITH YOUR QUOTE FOR ROMTEC'S PROPOSED SCOPE OF SUPPLY.

WALL TYPE SCHEDULE

 8" REINFORCED CONCRETE MASONRY BLOCK WALL WITH MORTAR JOINTS, GROUTED SOLID ALL CELLS RUNNING BOND PATTERN.



1 FLOOR PLAN
SCALE: 1/4" = 1'-0"

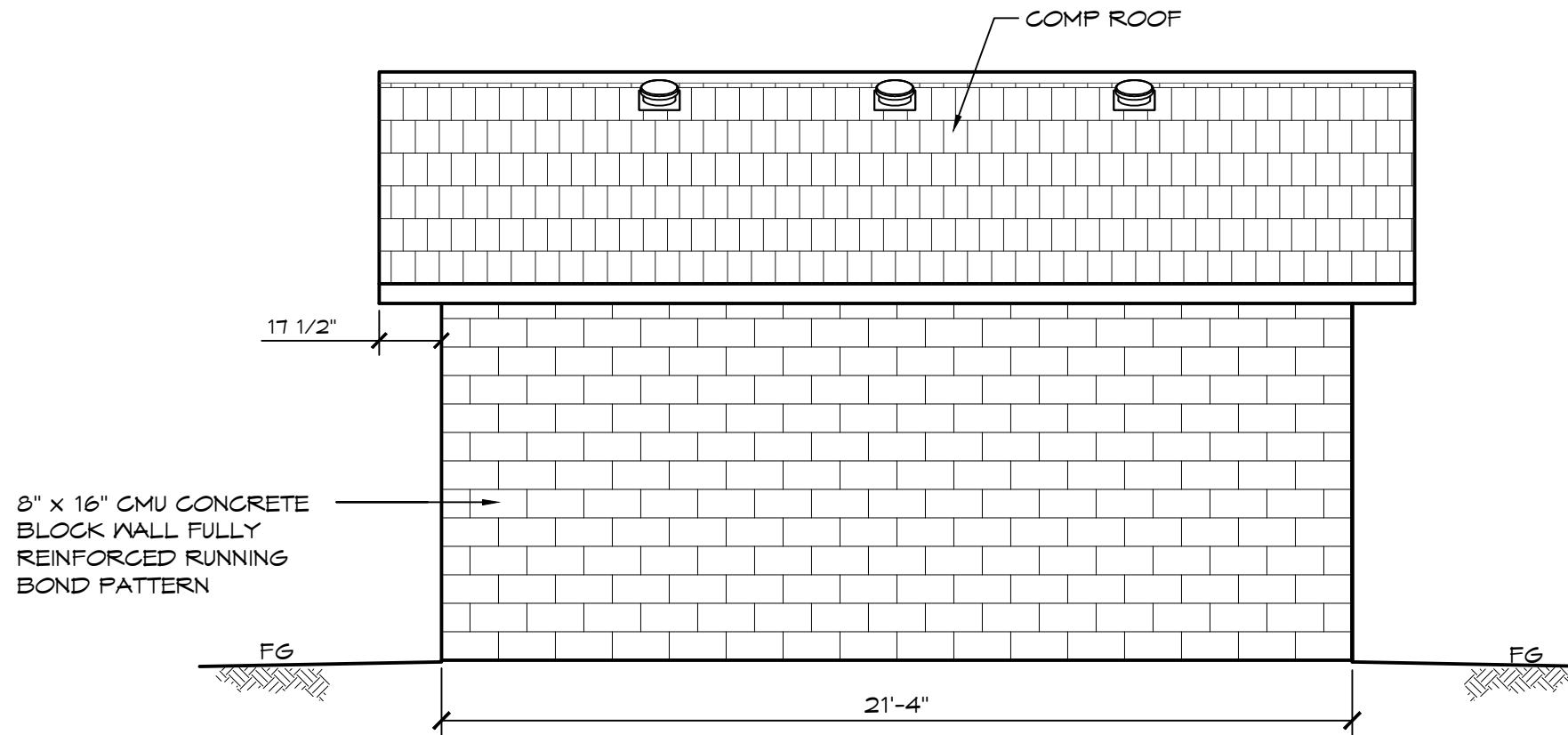


© 2015 ROMTEC, INC. ALL RIGHTS RESERVED. THESE PLANS AND DRAWINGS MAY NOT BE REPRODUCED, ADAPTED OR FURTHER DISTRIBUTED, AND NO BUILDINGS MAY BE CONSTRUCTED FROM THESE PLANS, WITHOUT THE WRITTEN PERMISSION OF ROMTEC, INC.

PROJECT: 2645 UTILITY BUILDING		
CUSTOMER PROJECT LOCATION		
PROJECT#:	XXXX	
MODEL#:	2645	
DATE:	00/00/15	
REVISIONS		
REV.	DATE:	BY
DRAWN BY: TH		

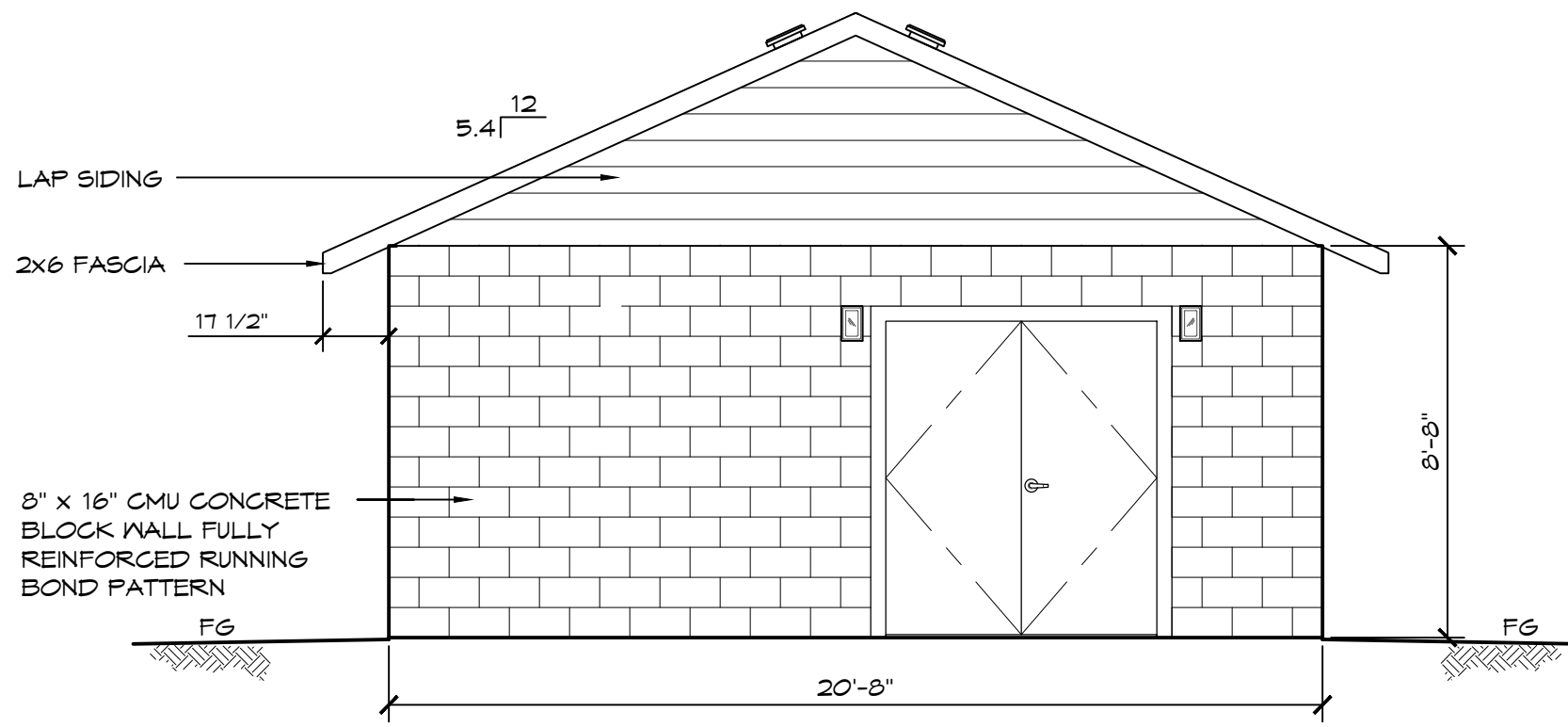
ROMTEC
18240 NORTH BANK ROAD - ROSEBURG, OR 97470
(541) 496-3541 FAX (541) 496-0803

PRELIMINARY



8" x 16" CMU CONCRETE
BLOCK WALL FULLY
REINFORCED RUNNING
BOND PATTERN

C ELEVATION VIEW
SCALE: 1/4" = 1'-0"



LAP SIDING
2x6 FASCIA

8" x 16" CMU CONCRETE
BLOCK WALL FULLY
REINFORCED RUNNING
BOND PATTERN

D ELEVATION VIEW
SCALE: 1/4" = 1'-0"

ROMTEC

18240 NORTH BANK ROAD - ROSEBURG, OR 97470
(541) 496-3541 FAX (541) 496-0803

PRELIMINARY

© 2015 ROMTEC, INC. ALL RIGHTS RESERVED. THESE PLANS AND DRAWINGS MAY NOT BE REPRODUCED, ADAPTED OR FURTHER DISTRIBUTED, AND NO BUILDINGS MAY BE CONSTRUCTED FROM THESE PLANS, WITHOUT THE WRITTEN PERMISSION OF ROMTEC, INC.

PROJECT: 2645 UTILITY BUILDING

CUSTOMER
PROJECT
LOCATION

SHEET TITLE: ELEVATION

PROJECT#: XXXX

MODEL#: 2645

DATE: 00/00/15

REVISIONS

REV. DATE BY

DRAWN BY: TH

SHEET NO.