
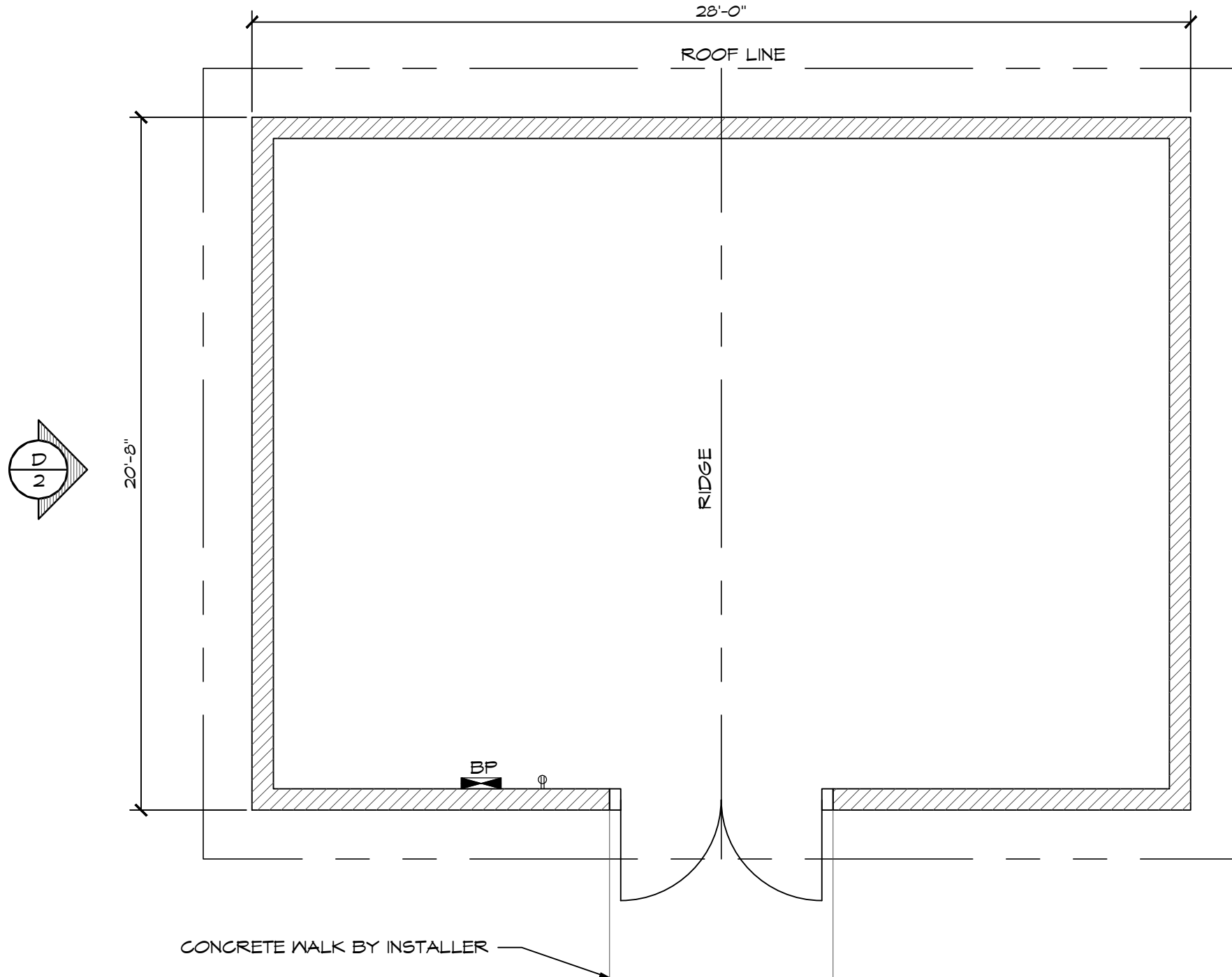


LEGEND		
SYMBOL	DESCRIPTION	AREA/ QUANTITY
	EXTERIOR WALL LIGHTS	2
	INTERIOR CEILING LIGHTS	2
⊕	ELECTRICAL OUTLET	1

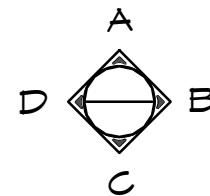
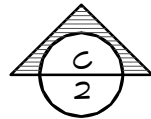
THESE PLAN VIEW AND ELEVATION DRAWINGS ARE A PRELIMINARY ARCHITECTURAL REPRESENTATION OF THE BUILDING. ALL DIMENSIONS, FEATURES AND COMPONENTS SHOWN ON THESE PRELIMINARY DRAWINGS MAY OR MAY NOT BE PART OF THE QUOTE. PLEASE REFER TO THE "SCOPE OF SUPPLY AND SERVICES" LETTER PROVIDED WITH YOUR QUOTE FOR ROMTEC'S PROPOSED SCOPE OF SUPPLY.

WALL TYPE SCHEDULE

 8" REINFORCED CONCRETE MASONRY BLOCK WALL WITH MORTAR JOINTS, GROUTED SOLID ALL CELLS RUNNING BOND PATTERN.



1 FLOOR PLAN
SCALE: 1/4" = 1'-0"



© 2015 ROMTEC, INC. ALL RIGHTS RESERVED. THESE PLANS AND DRAWINGS MAY NOT BE REPRODUCED, ADAPTED OR FURTHER DISTRIBUTED, AND NO BUILDINGS MAY BE CONSTRUCTED FROM THESE PLANS, WITHOUT THE WRITTEN PERMISSION OF ROMTEC, INC.

PROJECT: 2648 UTILITY BUILDING

CUSTOMER PROJECT LOCATION

PROJECT#:

MODEL#: 2648

DATE: 00/00/15

REVISIONS

REV. DATE: BY

DRAWN BY: TH

SHEET NO.

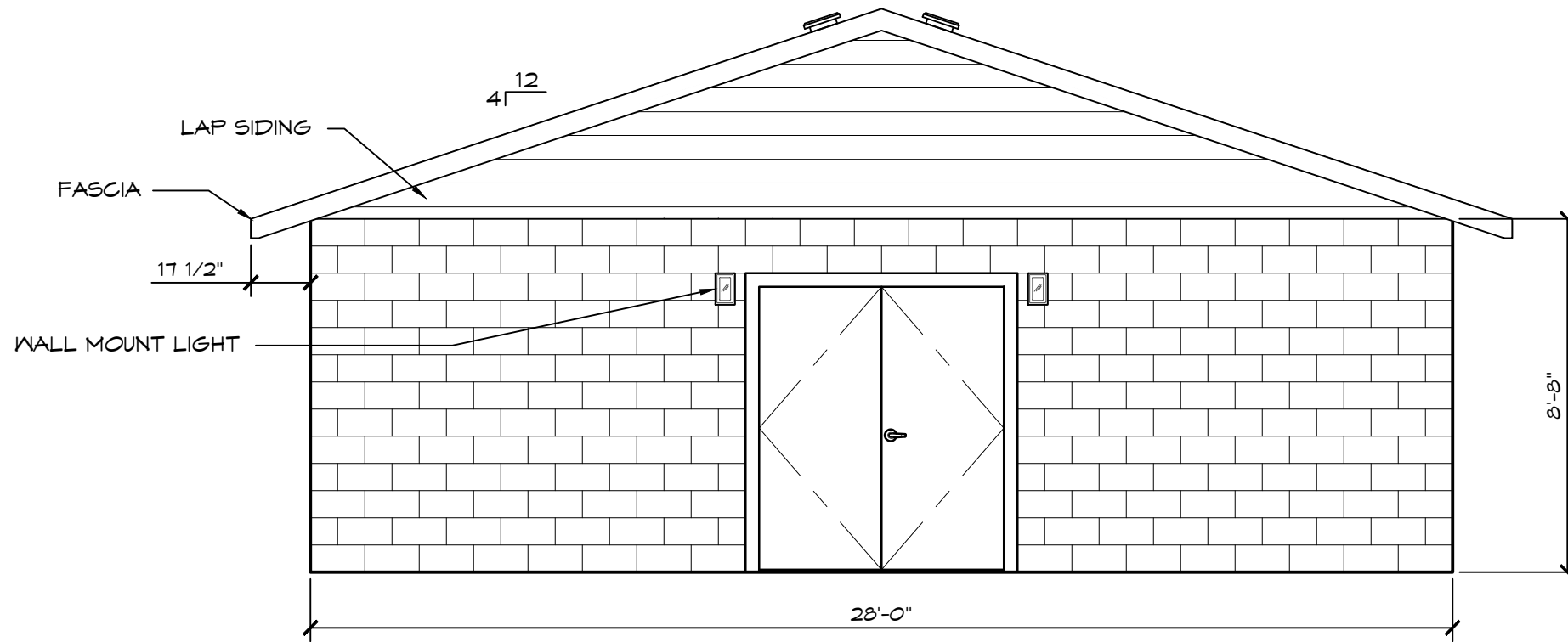
1



18240 NORTH BANK ROAD - ROSEBURG, OR 97470
(541) 496-3541 FAX (541) 496-0803

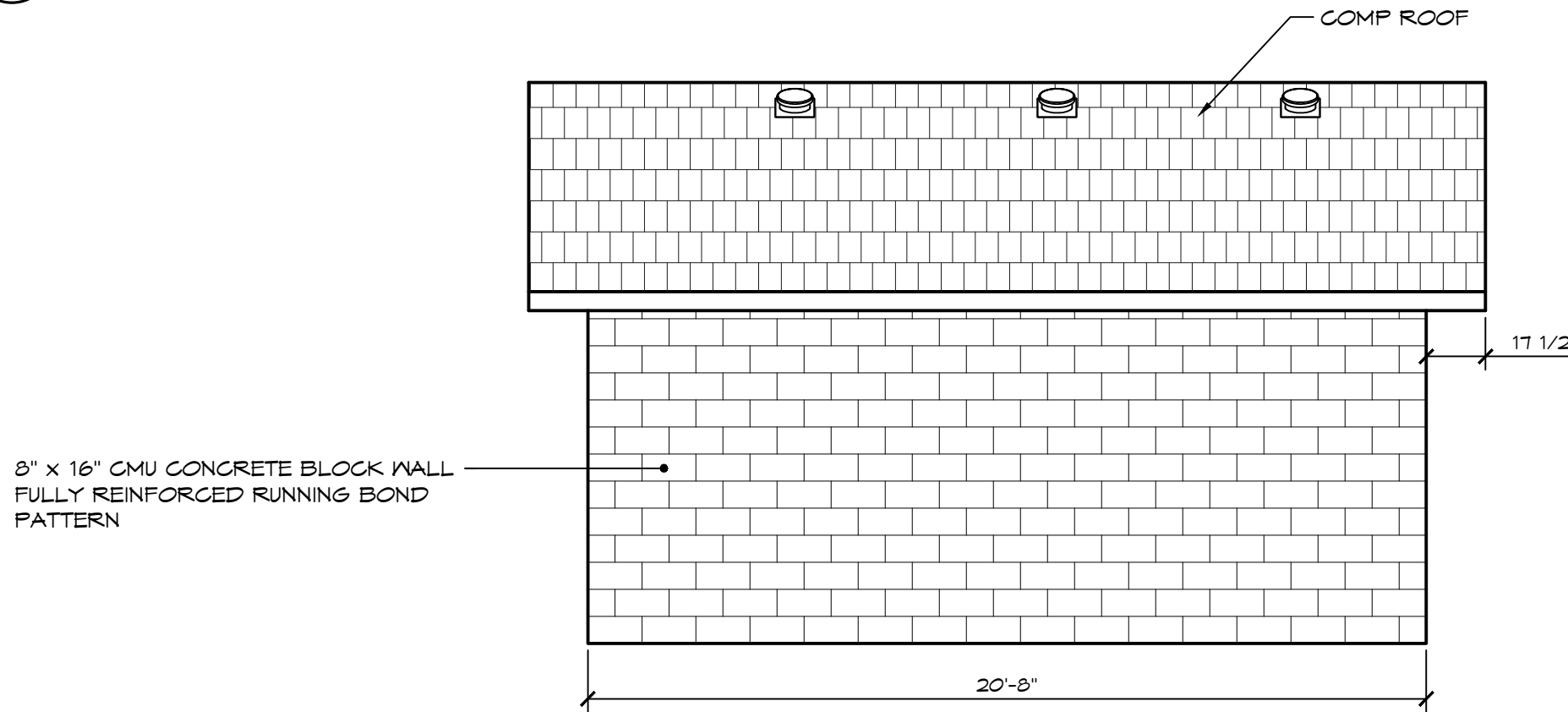
PRELIMINARY

SHEET TITLE: FLOOR PLAN



THESE PLAN VIEW AND ELEVATION DRAWINGS ARE A PRELIMINARY ARCHITECTURAL REPRESENTATION OF THE BUILDING. ALL DIMENSIONS, FEATURES AND COMPONENTS SHOWN ON THESE PRELIMINARY DRAWINGS MAY OR MAY NOT BE PART OF THE QUOTE. PLEASE REFER TO THE "SCOPE OF SUPPLY AND SERVICES" LETTER PROVIDED WITH YOUR QUOTE FOR ROMTEC'S PROPOSED SCOPE OF SUPPLY.

C ELEVATION VIEW
SCALE: 1/4" = 1'-0"



8" x 16" CMU CONCRETE BLOCK WALL FULLY REINFORCED RUNNING BOND PATTERN

B ELEVATION VIEW
SCALE: 1/4" = 1'-0"

© 2015 ROMTEC, INC. ALL RIGHTS RESERVED. THESE PLANS AND DRAWINGS MAY NOT BE REPRODUCED, ADAPTED OR FURTHER DISTRIBUTED, AND NO BUILDINGS MAY BE CONSTRUCTED FROM THESE PLANS, WITHOUT THE WRITTEN PERMISSION OF ROMTEC, INC.

PROJECT: 2648 UTILITY BUILDING

CUSTOMER PROJECT LOCATION

SHEET TITLE: ELEVATIONS

PROJECT#:

MODEL#: 2648

DATE: 00/00/15

REVISIONS

REV. DATE: BY

DRAWN BY: TH

SHEET NO.

2

ROMTEC

18240 NORTH BANK ROAD - ROSEBURG, OR 97470
(541) 496-3541 FAX (541) 496-0803

PRELIMINARY