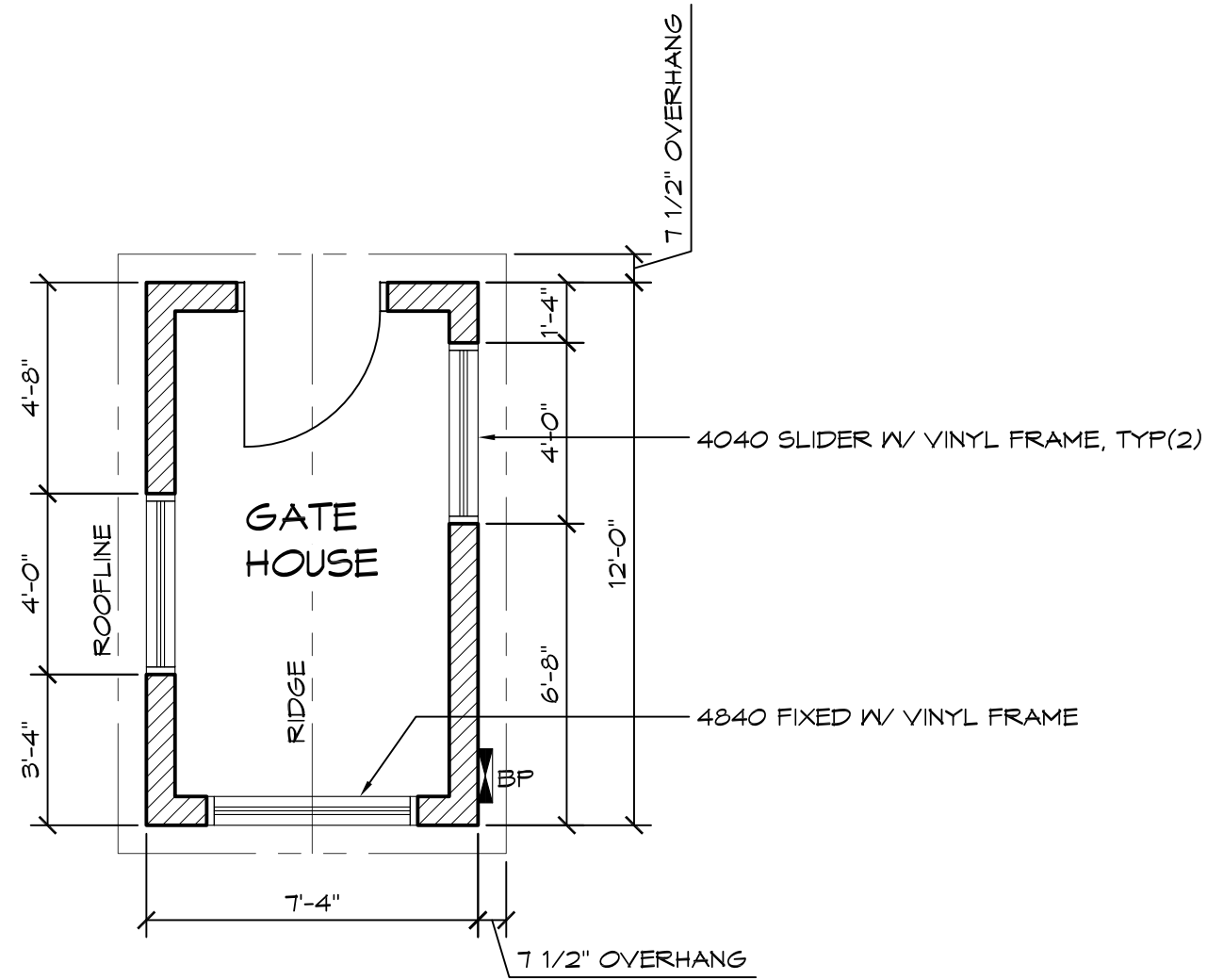


# Gatehouse - Model 2701

## Floor Plan

### WALL TYPE SCHEDULE

 8" CMU MORTAR JOINT BLOCK WALL REINFORCED & GROUT FILLED



**1 FLOOR PLAN**  
SCALE: 1/4" = 1'-0"



© 2014 ROMTEC, INC. ALL RIGHTS RESERVED. THESE PLANS AND DRAWINGS MAY NOT BE REPRODUCED, ADAPTED OR FURTHER DISTRIBUTED, AND NO BUILDINGS MAY BE CONSTRUCTED FROM THESE PLANS, WITHOUT THE WRITTEN PERMISSION OF ROMTEC, INC.

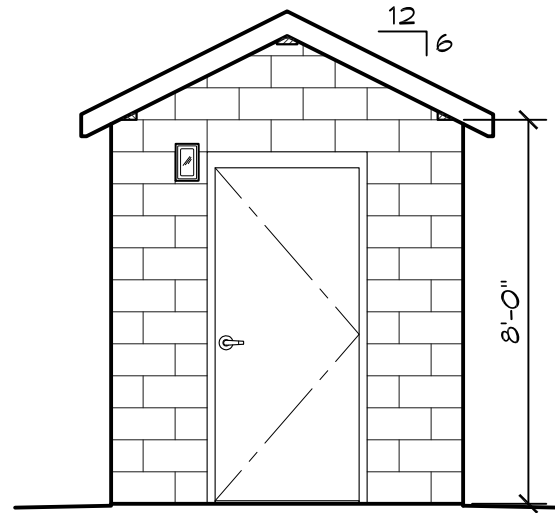
PROJECT: GATEHOUSE 1	
CUSTOMER	PROJECT
LOCATION	LOCATION
SHEET TITLE: FLOOR PLAN	
PROJECT#:	243
MODEL#:	CUSTOM
DATE:	07/29/14
REVISIONS	
REV.	DATE
1	10/14/14
BY	TH
DRAWN BY: SK	

**ROMTEC**  
18240 NORTH BANK ROAD - ROSEBURG, OR 97470  
(541) 496-3541 FAX (541) 496-0803

**PRELIMINARY**

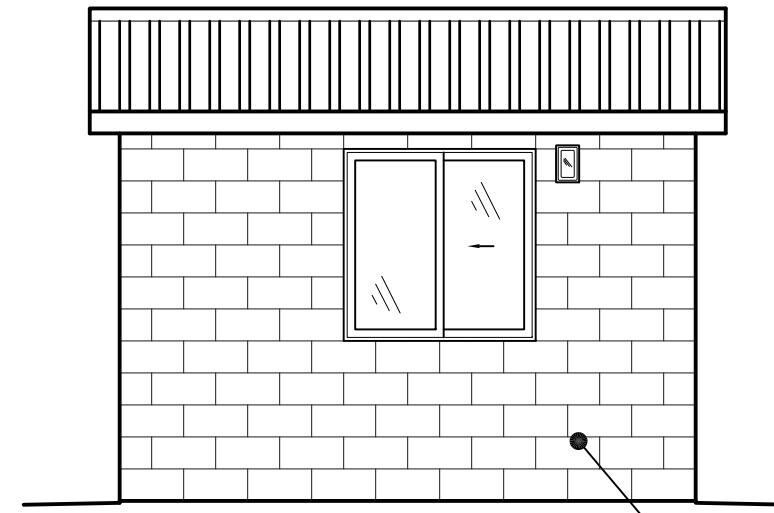
# Gatehouse - Model 2701

## Elevations



**1** NORTH ELEVATION

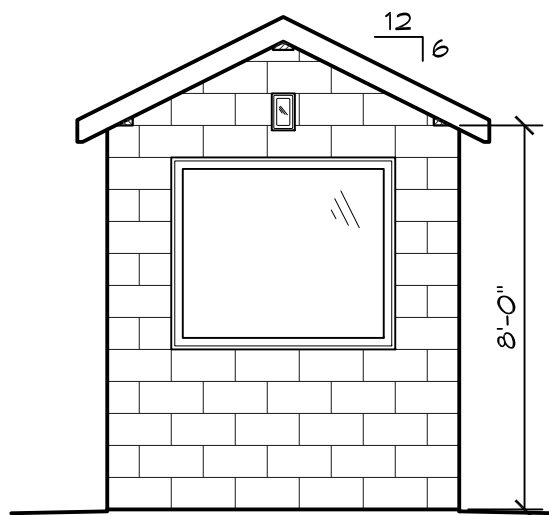
SCALE: 1/4" = 1'-0"



**2** WEST ELEVATION

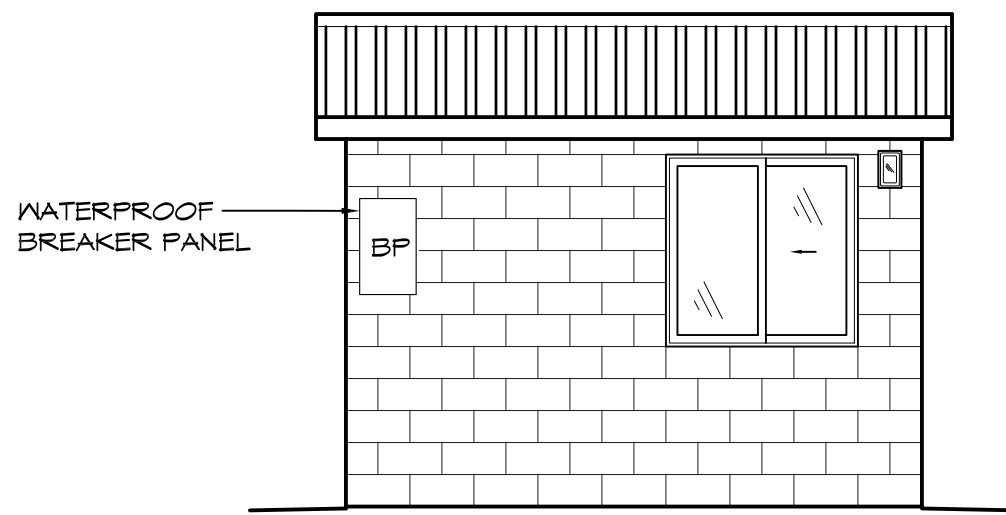
SCALE: 1/4" = 1'-0"

8" x 16" CMU CONCRETE BLOCK WALL FULLY REINFORCED RUNNING BOND PATTERN



**3** SOUTH ELEVATION

SCALE: 1/4" = 1'-0"



**4** EAST ELEVATION

SCALE: 1/4" = 1'-0"

WATERPROOF BREAKER PANEL

© 2014 ROMTEC, INC. ALL RIGHTS RESERVED. THESE PLANS AND DRAWINGS MAY NOT BE REPRODUCED, ADAPTED OR FURTHER DISTRIBUTED, AND NO BUILDINGS MAY BE CONSTRUCTED FROM THESE PLANS, WITHOUT THE WRITTEN PERMISSION OF ROMTEC, INC.

PROJECT: GATEHOUSE 1

CUSTOMER	PROJECT	LOCATION
243	CUSTOM	ELEVATIONS
PROJECT#:	DATE:	BY:
243	07/29/14	TH
MODEL#:	REVISIONS	
CUSTOM		
DATE:	REV.	DATE:
07/29/14	1	10/14/14
REVISIONS		
DRAWN BY:	SK	
SHEET NO.	2	