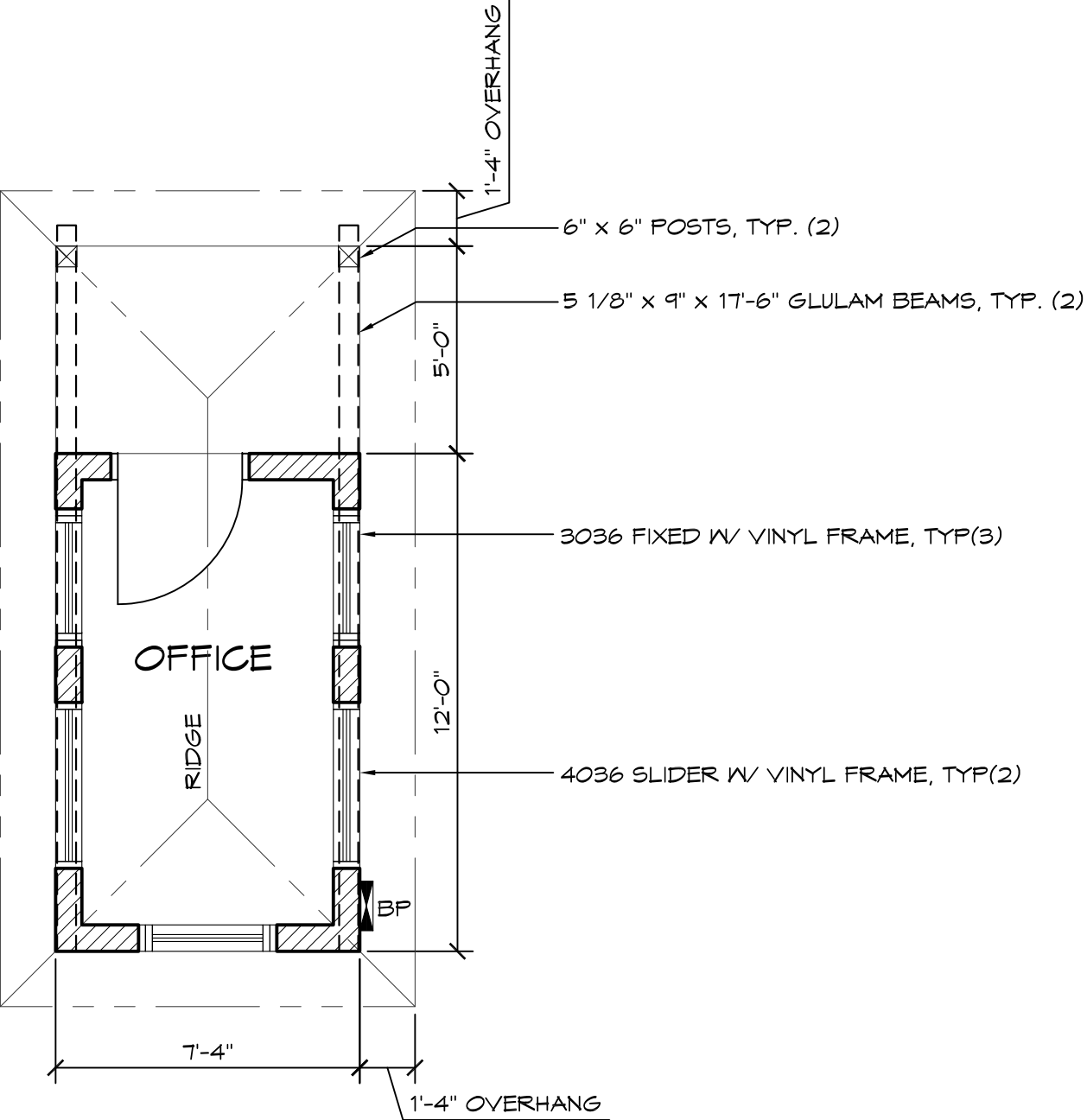


Gatehouse - Model 2702

Floor Plan

WALL TYPE SCHEDULE

 8" CMU MORTAR JOINT BLOCK WALL REINFORCED & GROUT FILLED



1 FLOOR PLAN
SCALE: 1/4" = 1'-0"



PLAN NORTH

© 2014 ROMTEC, INC. ALL RIGHTS RESERVED. THESE PLANS AND DRAWINGS MAY NOT BE REPRODUCED, ADAPTED OR FURTHER DISTRIBUTED, AND NO BUILDINGS MAY BE CONSTRUCTED FROM THESE PLANS, WITHOUT THE WRITTEN PERMISSION OF ROMTEC, INC.

PROJECT: GATEHOUSE 2

CUSTOMER
PROJECT
LOCATION

SHEET TITLE: FLOOR PLAN

PROJECT#: 243

MODEL#: CUSTOM

DATE: 07/29/14

REVISIONS

REV.	DATE	BY
1	10/14/14	TH

DRAWN BY: SK

SHEET NO. 1

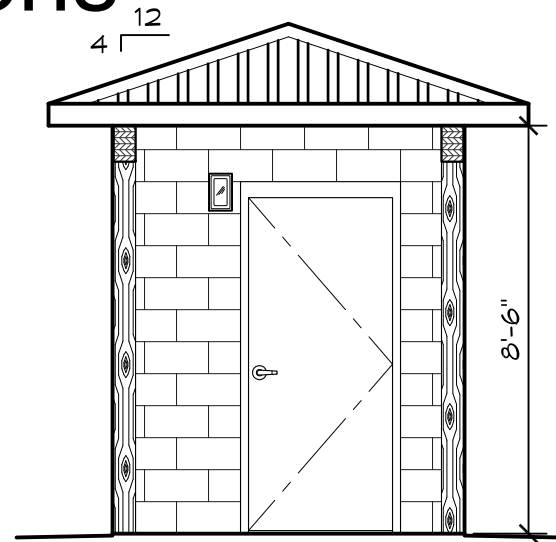


18240 NORTH BANK ROAD - ROSEBURG, OR 97470
(541) 496-3541 FAX (541) 496-0803

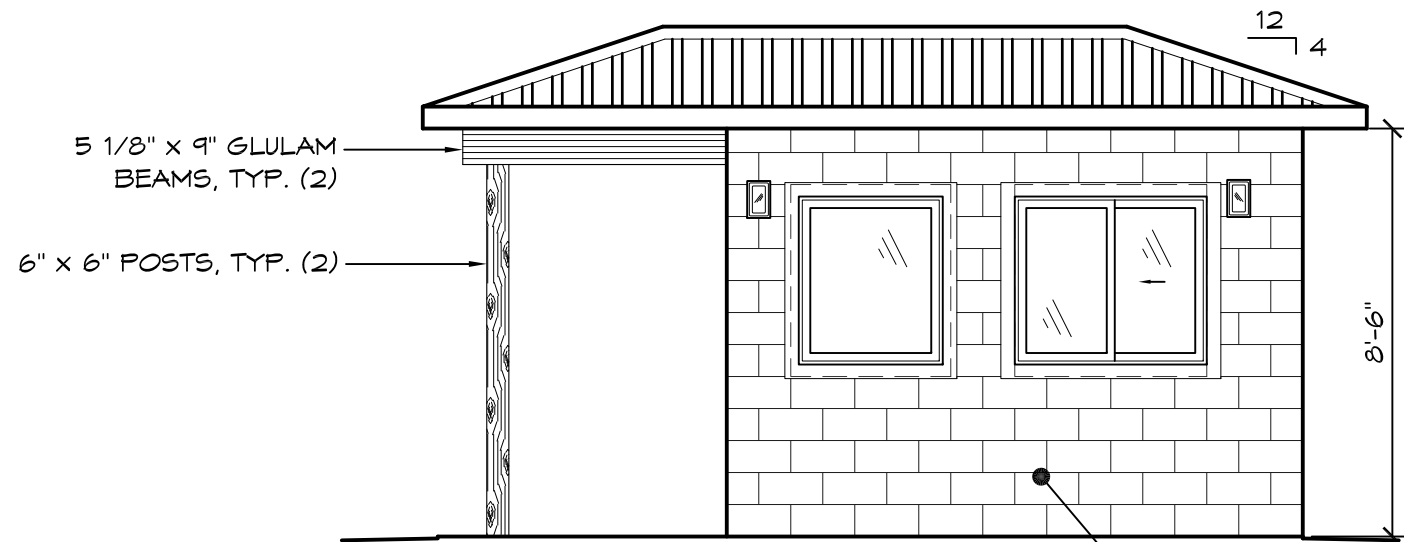
PRELIMINARY

Gatehouse - Model 2702

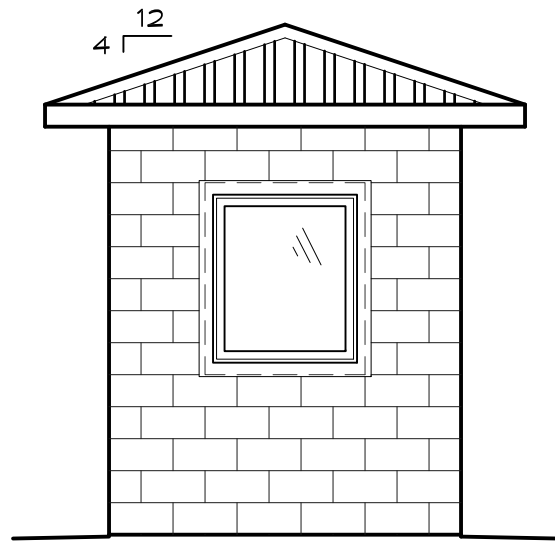
Elevations



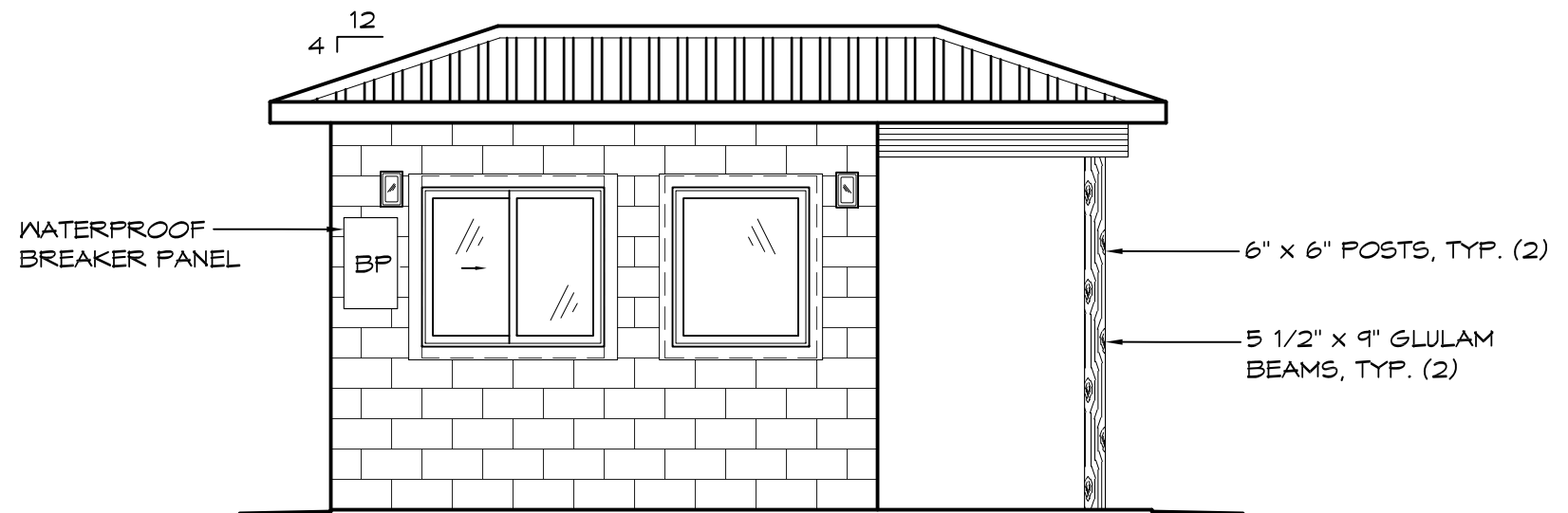
1 NORTH ELEVATION
SCALE: 1/4" = 1'-0"



2 WEST ELEVATION
SCALE: 1/4" = 1'-0"



3 SOUTH ELEVATION
SCALE: 1/4" = 1'-0"



4 EAST ELEVATION
SCALE: 1/4" = 1'-0"

5 1/8" x 9" GLULAM BEAMS, TYP. (2)
6" x 6" POSTS, TYP. (2)

8" x 16" CMU CONCRETE BLOCK WALL FULLY REINFORCED RUNNING BOND PATTERN

WATERPROOF BREAKER PANEL
BP

6" x 6" POSTS, TYP. (2)
5 1/2" x 9" GLULAM BEAMS, TYP. (2)

© 2014 ROMTEC, INC. ALL RIGHTS RESERVED. THESE PLANS AND DRAWINGS MAY NOT BE REPRODUCED, ADAPTED OR FURTHER DISTRIBUTED, AND NO BUILDINGS MAY BE CONSTRUCTED FROM THESE PLANS, WITHOUT THE WRITTEN PERMISSION OF ROMTEC, INC.

PROJECT: GATEHOUSE 2
CUSTOMER PROJECT LOCATION
SHEET TITLE: ELEVATIONS

PROJECT#:	243	
MODEL#:	CUSTOM	
DATE:	07/29/14	
REVISIONS		
REV.	DATE	BY
1	10/14/14	TH
DRAWN BY:	SK	
SHEET NO.	2	