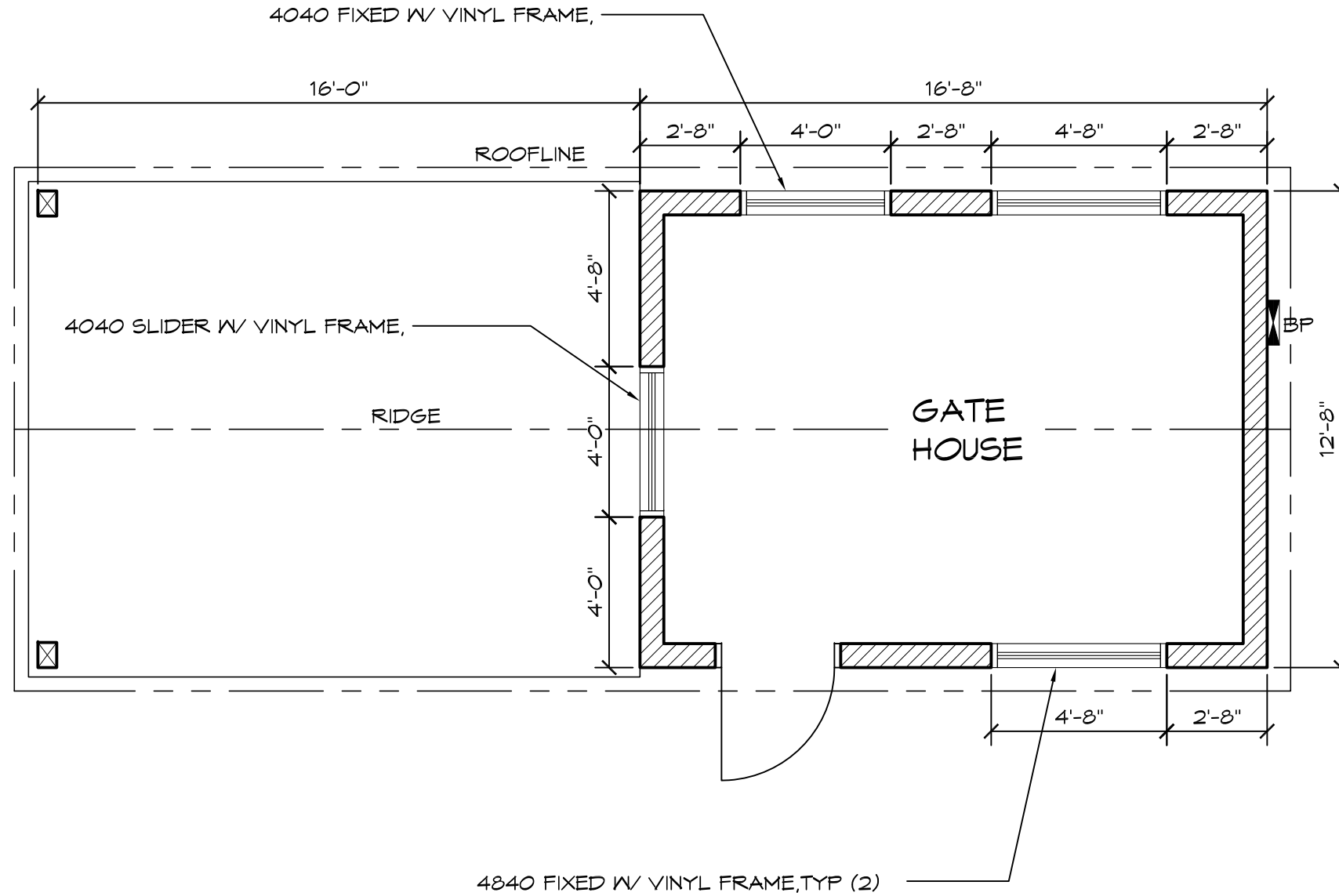


Gatehouse - Model 2703

Floor Plan

WALL TYPE SCHEDULE

 8" x 16" CMU CONCRETE BLOCK WALL
FULLY REINFORCED RUNNING BOND PATTERN



1 FLOOR PLAN
SCALE: 1/4" = 1'-0"



PLAN NORTH

ROMTEC

18240 NORTH BANK ROAD - ROSEBURG, OR 97470
(541) 496-3541 FAX (541) 496-0803

PRELIMINARY

© 2014 ROMTEC, INC. ALL RIGHTS RESERVED. THESE PLANS AND DRAWINGS MAY NOT BE REPRODUCED, ADAPTED OR FURTHER DISTRIBUTED, AND NO BUILDINGS MAY BE CONSTRUCTED FROM THESE PLANS, WITHOUT THE WRITTEN PERMISSION OF ROMTEC, INC.

PROJECT: GATEHOUSE 3

CUSTOMER
PROJECT
LOCATION

PROJECT#: 243

MODEL#: CUSTOM

DATE: 08/06/14

REVISIONS

REV.	DATE:	BY:
1	09/02/14	TH
1	10/14/14	TH

DRAWN BY: SK

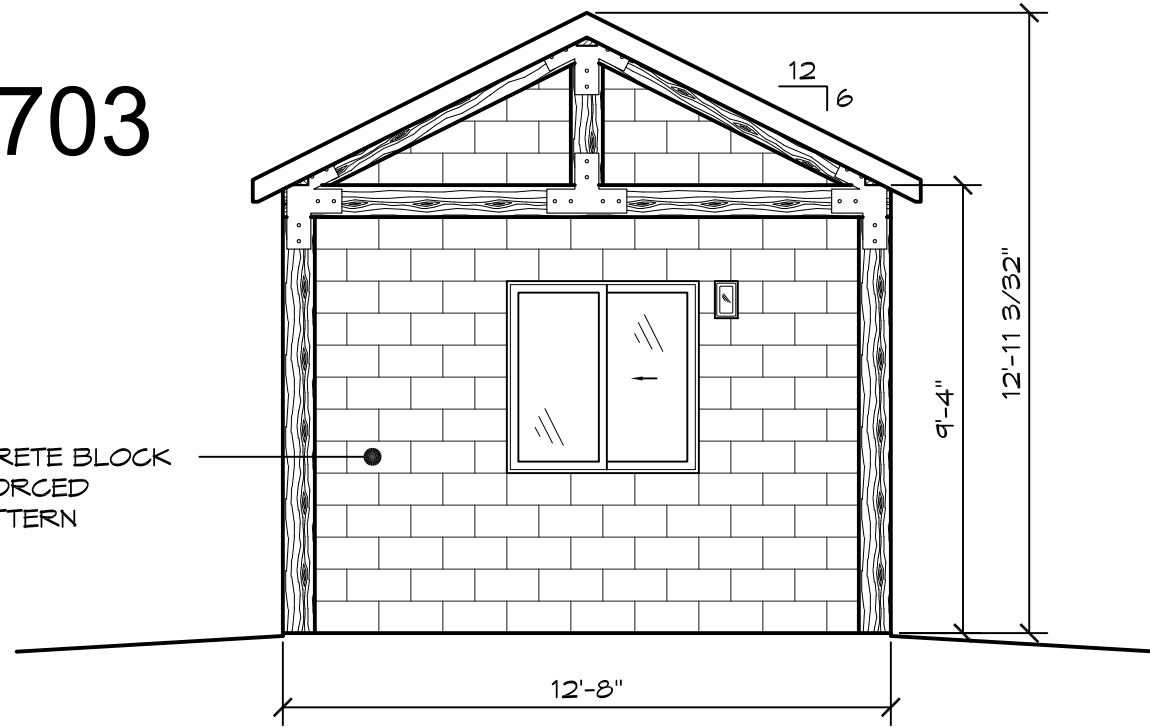
SHEET NO.

1

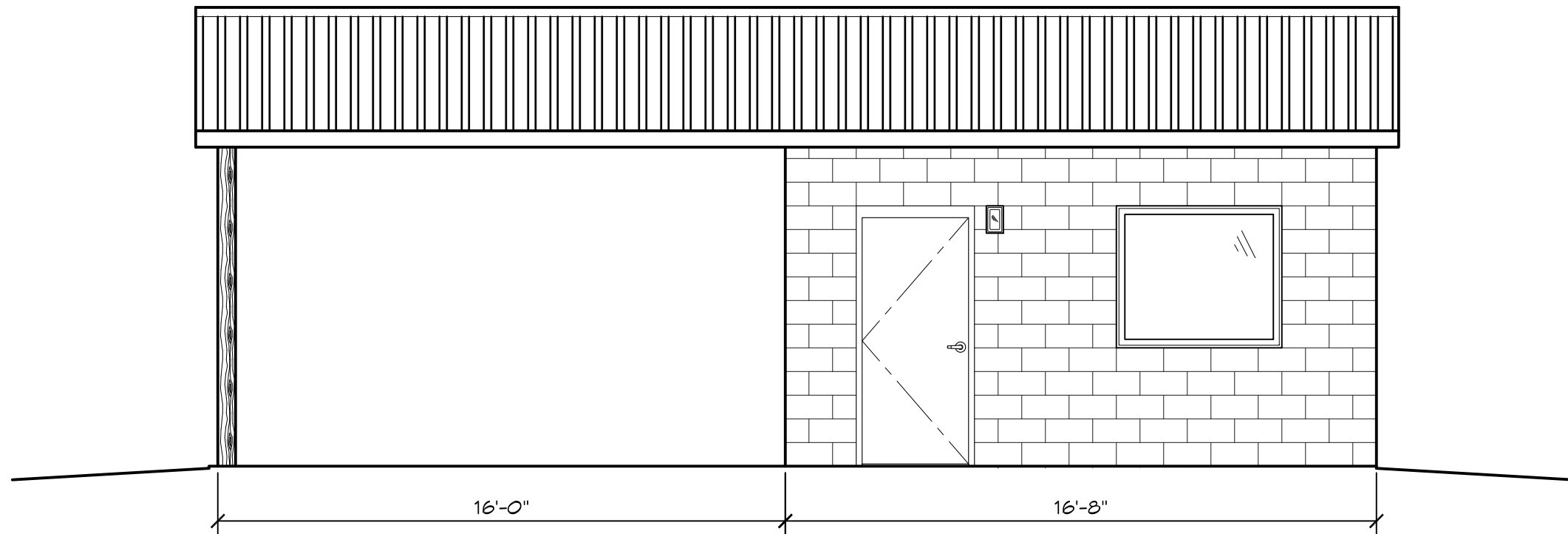
Gatehouse - Model 2703

Elevations

8" x 16" CMU CONCRETE BLOCK
WALL FULLY REINFORCED
RUNNING BOND PATTERN



1 WEST ELEVATION
SCALE: 1/4" = 1'-0"



2 SOUTH ELEVATION
SCALE: 1/4" = 1'-0"

ROMTEC

18240 NORTH BANK ROAD - ROSEBURG, OR 97470
(541) 496-3541 FAX (541) 496-0803

PRELIMINARY

© 2014 ROMTEC, INC. ALL RIGHTS RESERVED. THESE PLANS AND DRAWINGS MAY NOT BE REPRODUCED, ADAPTED OR FURTHER DISTRIBUTED, AND NO BUILDINGS MAY BE CONSTRUCTED FROM THESE PLANS, WITHOUT THE WRITTEN PERMISSION OF ROMTEC, INC.

PROJECT: GATEHOUSE 3

CUSTOMER
PROJECT
LOCATION

PROJECT#: 243

MODEL#: CUSTOM

DATE: 08/06/14

REVISIONS

REV.	DATE	BY
1	09/02/14	TH
1	10/14/14	TH

DRAWN BY: SK

SHEET NO.

2

SHEET TITLE: ELEVATIONS