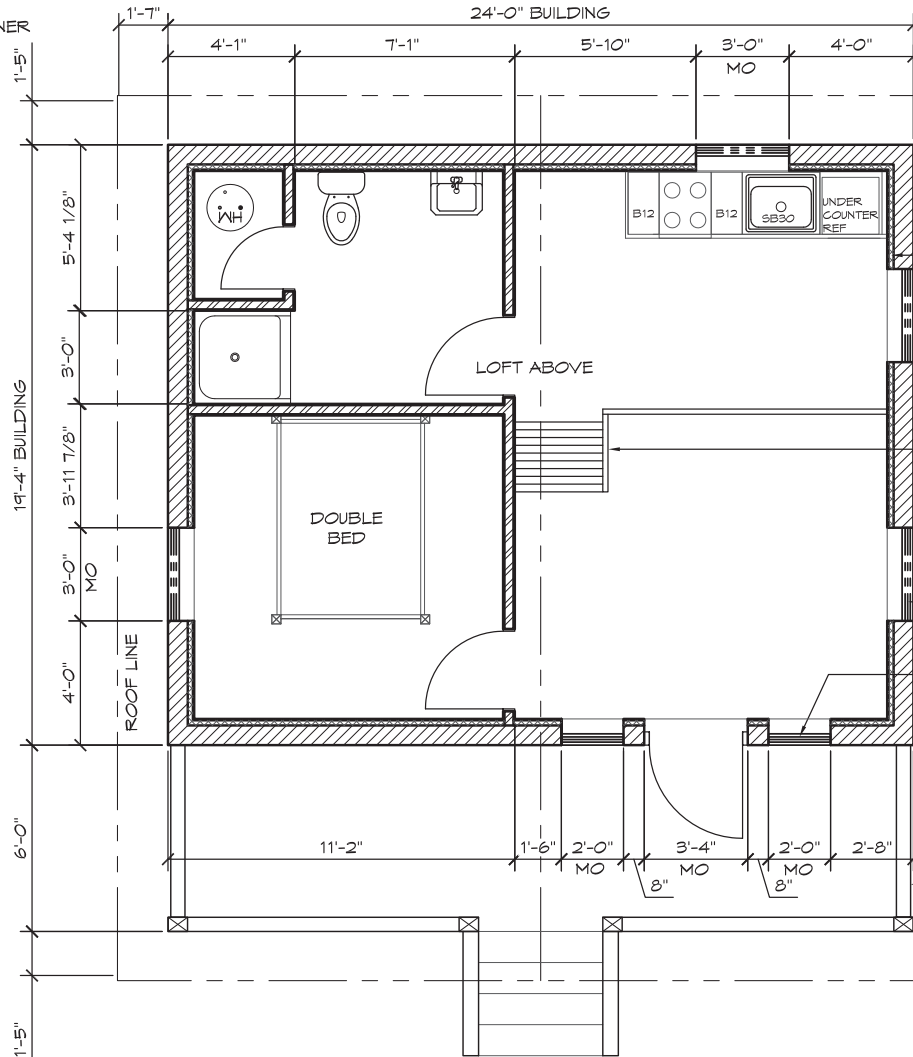


Cabin Model - 4

NOTE: FURNITURE BY OWNER



WALL TYPE SCHEDULE

-  8" x 16" CMU CONCRETE BLOCK WALL FULLY REINFORCED RUNNING BOND PATTERN WITH INSULATION
-  2x4 WOOD FRAMED WALL

1/2" DRYWALL OVER 2" RIGID INSULATION

SHIPMANS LADDER TO ACCESS LOFT

3040SL VINYL WINDOW, TYP.(4)

2040SH VINYL WINDOW, TYP.(2)

6x8 WOOD POSTS & 6x10 WOOD BEAMS

1 FLOOR PLAN
SCALE: 1/4" = 1'-0"



PLAN NORTH

ROMTEC

18240 NORTH BANK ROAD - ROSEBURG, OR 97470
(541) 496-3541 FAX (541) 496-0003

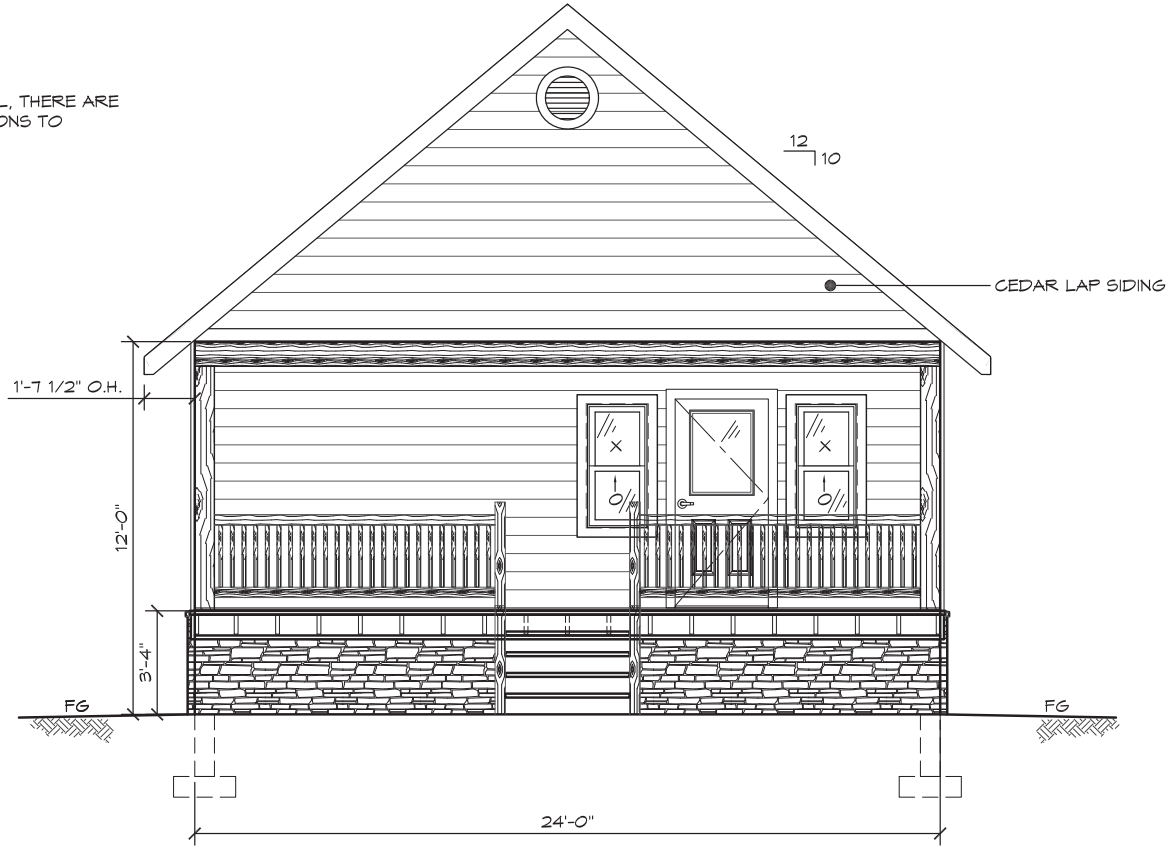
PRELIMINARY

© 2014 ROMTEC, INC. ALL RIGHTS RESERVED. THESE PLANS AND DRAWINGS MAY NOT BE REPRODUCED, ADAPTED OR FURTHER DISTRIBUTED, AND NO BUILDINGS MAY BE CONSTRUCTED FROM THESE PLANS, WITHOUT THE WRITTEN PERMISSION OF ROMTEC, INC.

PROJECT:	CABIN	
CUSTOMER PROJECT LOCATION		
PROJECT TITLE:	CABIN #4 - FLOORPLAN	
PROJECT#:	XXXX	
MODEL#:	CABIN	
DATE:	07/24/14	
REVISIONS		
REV.	DATE	BY
1	08/16/14	SK
2	12/14/14	TH
DRAWN BY:	SK	
SHEET NO.	1	

Cabin Model - 4

NOTE:
SIDING IS OPTIONAL, THERE ARE
MANY SIDING OPTIONS TO
CHOOSE FROM



1 SOUTH ELEVATION
SCALE: 1/4" = 1'-0"

ROMTEC

18240 NORTH BANK ROAD - ROSEBURG, OR 97470
(541) 496-3541 FAX (541) 496-0003

PRELIMINARY

© 2014 ROMTEC, INC. ALL RIGHTS RESERVED. THESE PLANS AND DRAWINGS MAY NOT BE REPRODUCED, ADAPTED OR FURTHER DISTRIBUTED, AND NO BUILDINGS MAY BE CONSTRUCTED FROM THESE PLANS, WITHOUT THE WRITTEN PERMISSION OF ROMTEC, INC.

PROJECT:	CABIN	
CUSTOMER PROJECT LOCATION		
PROJECT TITLE:	CABIN #4 - ELEVATIONS	
PROJECT#:	XXXX	
MODEL#:	CABIN	
DATE:	07/24/14	
REVISIONS		
REV.	DATE	BY
1	08/16/14	SK
2	12/19/14	TH
DRAWN BY: SK		
SHEET NO. 2		

Cabin Model - 4

NOTE:
SIDING IS OPTIONAL, THERE ARE
MANY SIDING OPTIONS TO
CHOOSE FROM



1 WEST ELEVATION
SCALE: 1/4" = 1'-0"



18240 NORTH BANK ROAD - ROSEBURG, OR 97470
(541) 496-3541 FAX (541) 496-0003

PRELIMINARY

© 2014 ROMTEC, INC. ALL RIGHTS RESERVED. THESE PLANS AND DRAWINGS MAY NOT BE REPRODUCED, ADAPTED OR FURTHER DISTRIBUTED, AND NO BUILDINGS MAY BE CONSTRUCTED FROM THESE PLANS, WITHOUT THE WRITTEN PERMISSION OF ROMTEC, INC.

PROJECT:	CABIN	
CUSTOMER PROJECT LOCATION		
PROJECT#:	XXXX	
MODEL#:	CABIN	
DATE:	07/24/14	
REVISIONS		
REV.	DATE	BY
1	08/16/14	SK
2	12/19/14	TH
DRAWN BY: SK		

SHEET TITLE: CABIN #4 - ELEVATIONS

SHEET NO.

3