

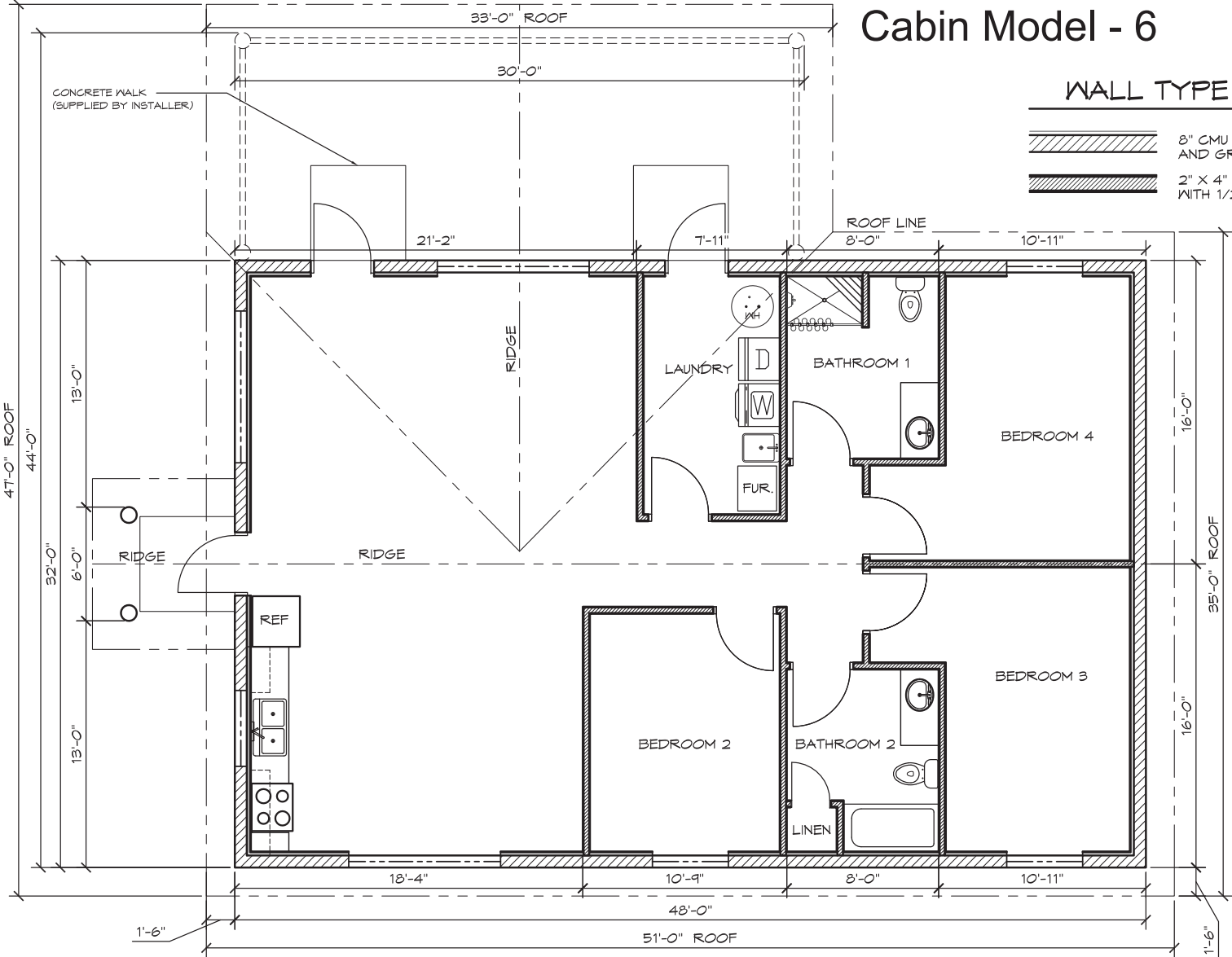


Cabin Model - 6

WALL TYPE SCHEDULE

-  8" CMU BLOCK WALL REINFORCED AND GROUT FILLED WITH INSULATION
-  2" X 4" STRUCTURAL WITH 1/2" DRYWALL



1 FLOOR PLAN
SCALE: 3/16" = 1'-0"



ROMTEC
18240 NORTH BANK ROAD • ROSEBURG, OR 97470
(541) 496-3541 FAX (541) 496-0003

PRELIMINARY

© 2014 ROMTEC, INC. ALL RIGHTS RESERVED. THESE PLANS AND DRAWINGS MAY NOT BE REPRODUCED, ADAPTED OR FURTHER DISTRIBUTED, AND NO BUILDINGS MAY BE CONSTRUCTED FROM THESE PLANS, WITHOUT THE WRITTEN PERMISSION OF ROMTEC, INC.

PROJECT: CABIN 006
CABIN 006
XXXX
XXXX

MODEL#: CABIN 6
2648

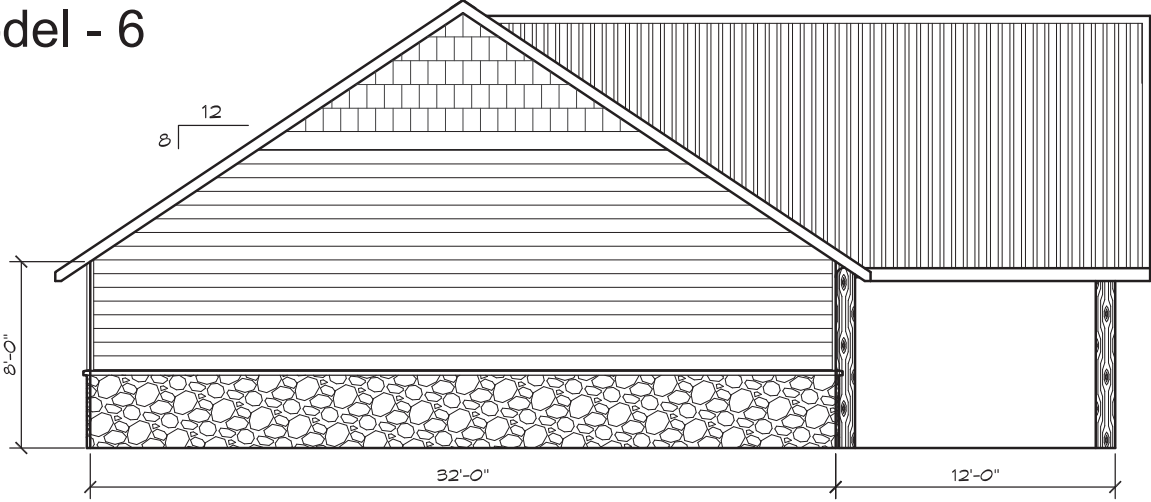
DATE: 00/00/14
REVISIONS

REV.	DATE	BY

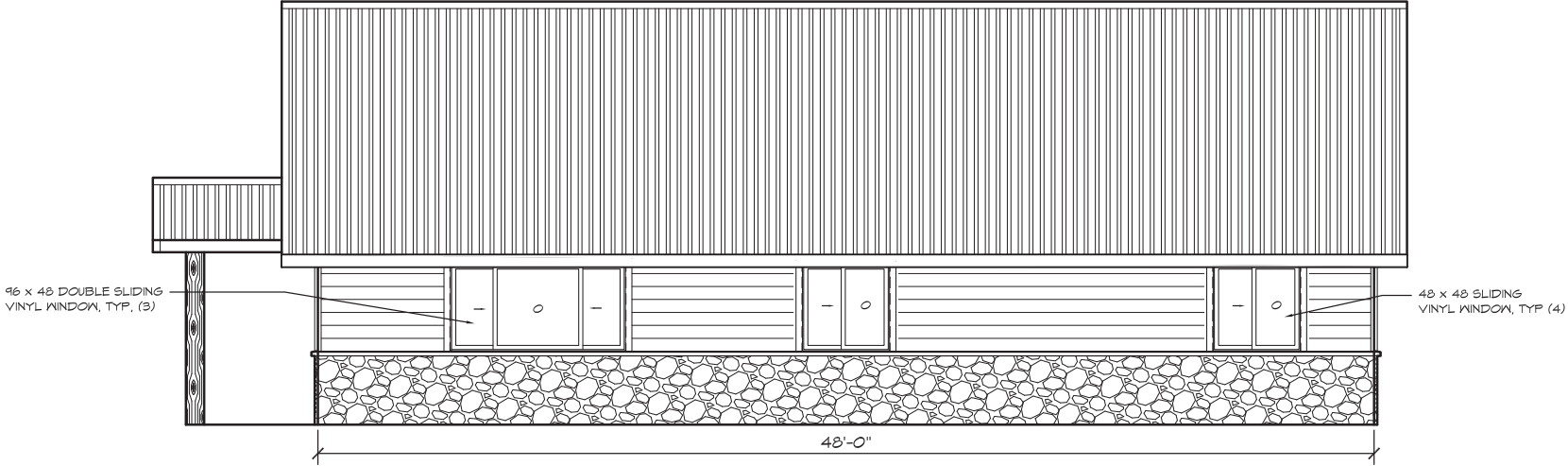
DRAWN BY: TH
SHEET NO. 1

SHEET TITLE: FLOOR PLAN

Cabin Model - 6



1 EAST ELEVATION
SCALE: 3/16" = 1'-0"



2 SOUTH ELEVATION
SCALE: 3/16" = 1'-0"



18240 NORTH BANK ROAD - ROSEBURG, OR 97470
(541) 496-3541 FAX (541) 496-0003

PRELIMINARY

© 2014 ROMTEC, INC. ALL RIGHTS RESERVED. THESE PLANS AND DRAWINGS MAY NOT BE REPRODUCED, ADAPTED OR FURTHER DISTRIBUTED, AND NO BUILDINGS MAY BE CONSTRUCTED FROM THESE PLANS, WITHOUT THE WRITTEN PERMISSION OF ROMTEC, INC.

PROJECT:	CABIN 006	
PROJECT:	CABIN 006	
MODEL#:	XXXX	
MODEL#:	XXXX	
DATE:	00/00/14	
REVISIONS		
REV.	DATE	BY
DRAWN BY:	TH	

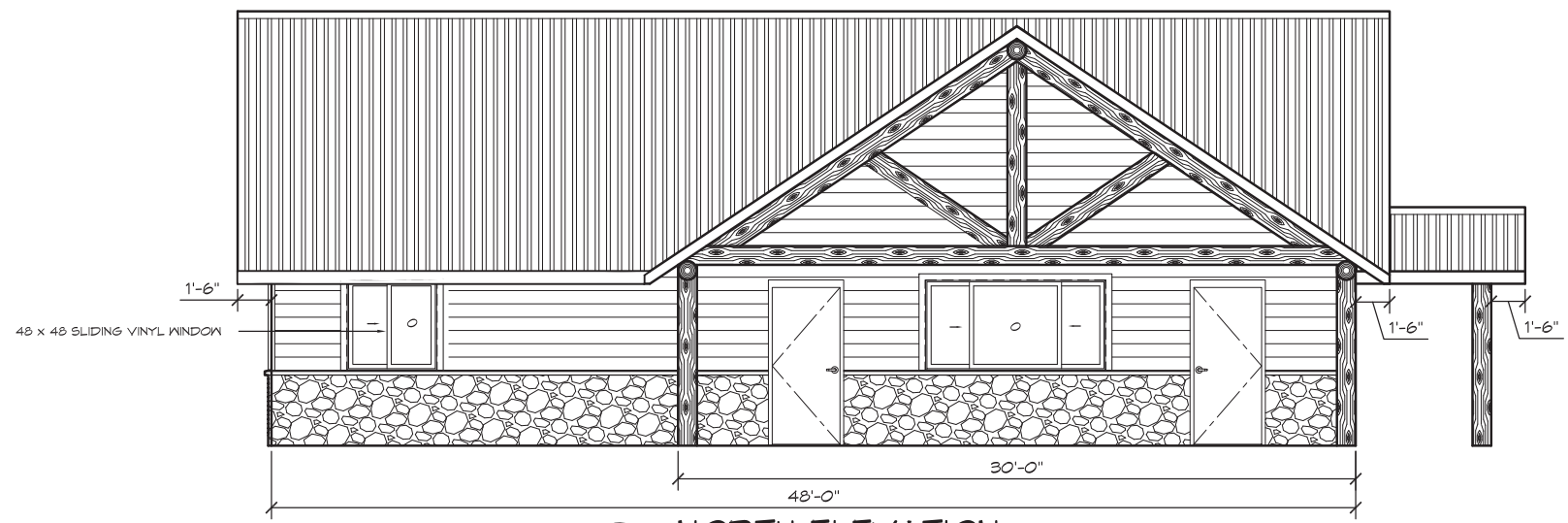
SHEET TITLE: ELEVATIONS

SHEET NO. 2

Cabin Model - 6



1 WEST ELEVATION
SCALE: 3/16" = 1'-0"



2 NORTH ELEVATION
SCALE: 3/16" = 1'-0"

ROMTEC
18240 NORTH BANK ROAD - ROSEBURG, OR 97470
(541) 496-3541 FAX (541) 496-0003

PRELIMINARY

© 2014 ROMTEC, INC. ALL RIGHTS RESERVED. THESE PLANS AND DRAWINGS MAY NOT BE REPRODUCED, ADAPTED OR FURTHER DISTRIBUTED, AND NO BUILDINGS MAY BE CONSTRUCTED FROM THESE PLANS, WITHOUT THE WRITTEN PERMISSION OF ROMTEC, INC.

PROJECT: CABIN 006
CABIN 006
XXXX
XXXX

PROJECT: CABIN 6
MODEL#: 2648

DATE: 00/00/14
REVISIONS

REV.	DATE	BY

DRAWN BY: TH

SHEET TITLE: ELEVATIONS