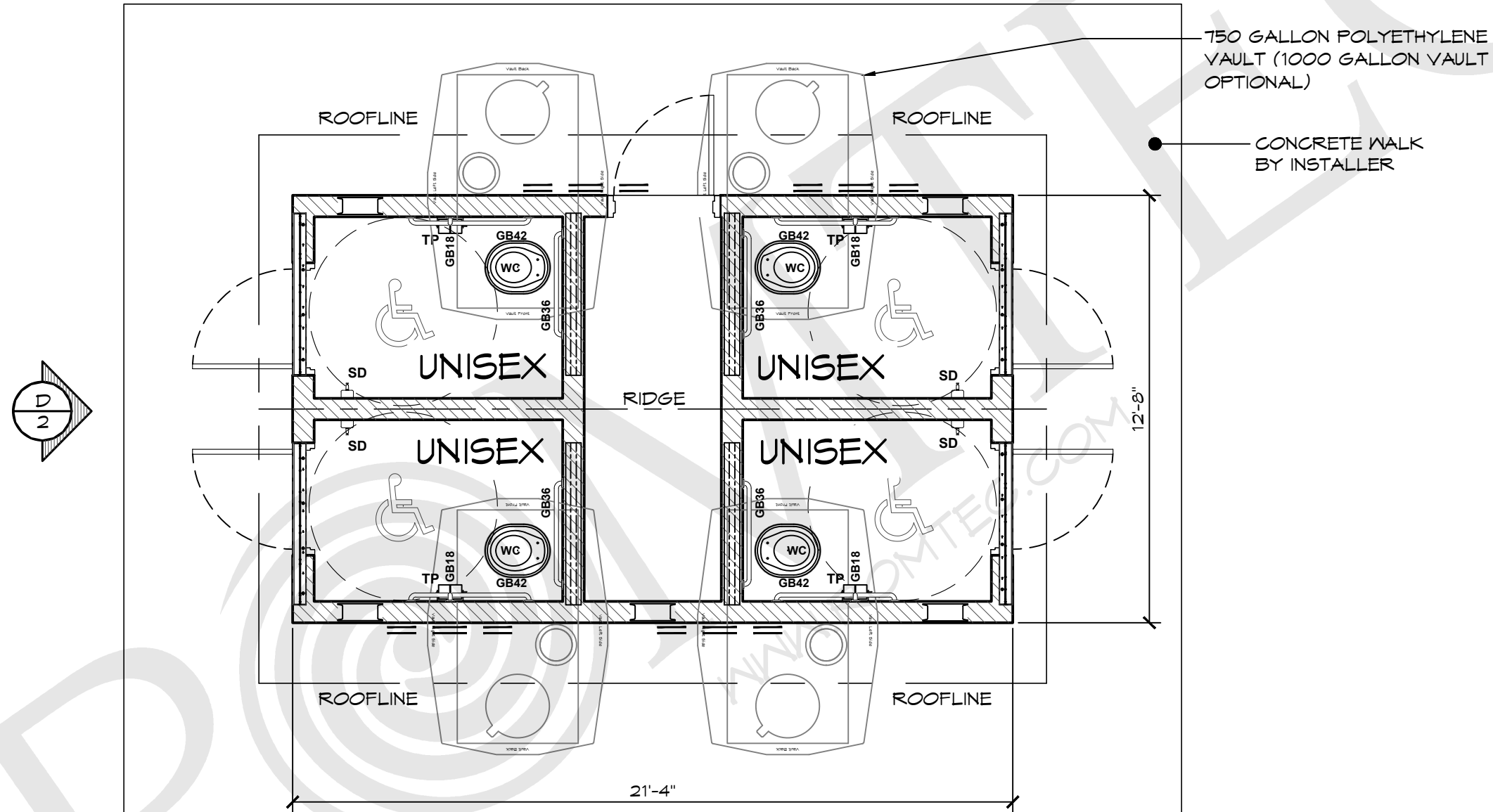


LEGEND		
SYMBOL	DESCRIPTION	AREA/ QUANTITY
	GABLE WINDOW	4
	2x6 WOOD FILLER WALL	4
	16" x 24" KICKPROOF WALL VENT	5
	TWO ROLL TP DISPENSER	4
	HAND SANITIZER	4

THESE PLAN VIEW AND ELEVATION DRAWINGS ARE A PRELIMINARY ARCHITECTURAL REPRESENTATION OF THE BUILDING. ALL DIMENSIONS, FEATURES AND COMPONENTS SHOWN ON THESE PRELIMINARY DRAWINGS MAY OR MAY NOT BE PART OF THE QUOTE. PLEASE REFER TO THE "SCOPE OF SUPPLY AND SERVICES" LETTER PROVIDED WITH YOUR QUOTE FOR ROMTEC'S PROPOSED SCOPE OF SUPPLY.

WALL TYPE SCHEDULE

	8" REINFORCED CONCRETE MASONRY BLOCK WALL WITH MORTAR JOINTS, GROUTED SOLID ALL CELLS RUNNING BOND PATTERN.
--	--



1 FLOOR PLAN
SCALE: 1/4" = 1'-0"

© 2021 ROMTEC, INC. ALL RIGHTS RESERVED. THESE PLANS AND DRAWINGS MAY NOT BE REPRODUCED, ADAPTED OR FURTHER DISTRIBUTED, AND NO BUILDINGS MAY BE CONSTRUCTED FROM THESE PLANS, WITHOUT THE WRITTEN PERMISSION OF ROMTEC, INC.

PROJECT: 1015 SST ASPEN QUATTRO WATERLESS RESTROOM W/ STORAGE

CUSTOMER
PROJECT
LOCATION

SHEET TITLE: FLOOR PLAN

PROJECT#:	XXXX	
MODEL#:	1015	
DATE:	00/00/11	
REVISIONS		
REV.	DATE:	BY:
DRAWN BY:		JS

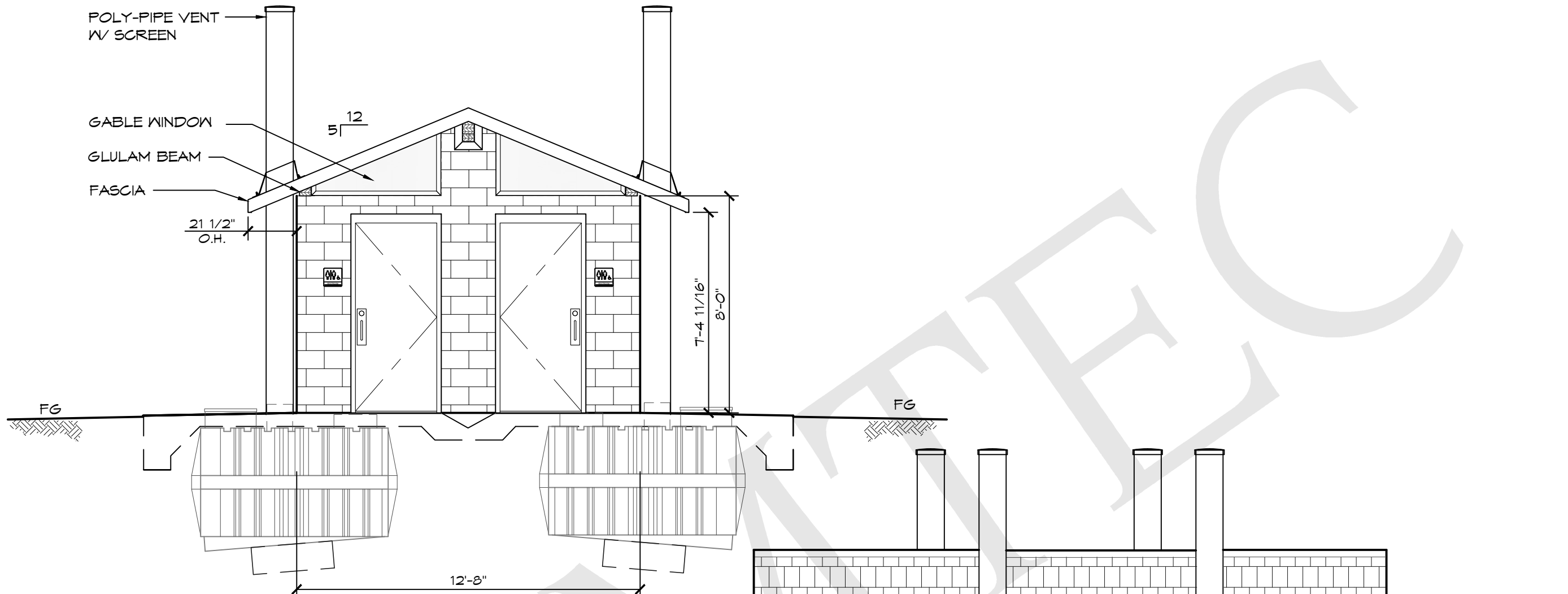
SHEET NO.

01

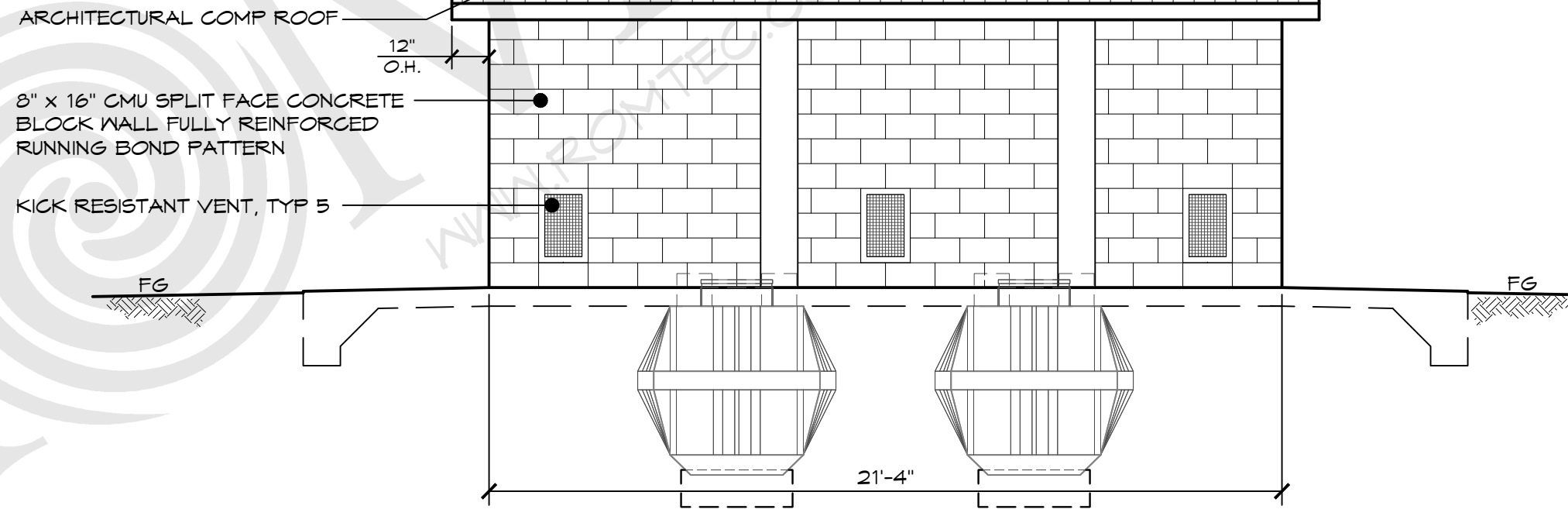
ROMTEC

18240 NORTH BANK ROAD - ROSEBURG, OR 97470
(541) 496-3541 FAX (541) 496-0803

PRELIMINARY



D ELEVATION VIEW
SCALE: 1/4" = 1'-0"



C ELEVATION VIEW
SCALE: 1/4" = 1'-0"

ROMTEC
18240 NORTH BANK ROAD - ROSEBURG, OR 97470
(541) 496-3541 FAX (541) 496-0803
PRELIMINARY

© 2021 ROMTEC, INC. ALL RIGHTS RESERVED. THESE PLANS AND DRAWINGS MAY NOT BE REPRODUCED, ADAPTED OR FURTHER DISTRIBUTED, AND NO BUILDINGS MAY BE CONSTRUCTED FROM THESE PLANS, WITHOUT THE WRITTEN PERMISSION OF ROMTEC, INC.

PROJECT: 1015 SST ASPEN QUATTRO WATERLESS RESTROOM W/ STORAGE
CUSTOMER: XXXX
PROJECT LOCATION: LOCATION
SHEET TITLE: ELEVATION VIEW

PROJECT#:	XXXX	
MODEL#:	1015	
DATE:	00/00/11	
REVISIONS		
REV.	DATE	BY
DRAWN BY:	JS	